

## Product datasheet for **TA350001**

### **GABPB2 (GABPB1) Rabbit Polyclonal Antibody**

#### **Product data:**

<b>Product Type:</b>	Primary Antibodies
<b>Applications:</b>	IHC, WB
<b>Recommended Dilution:</b>	WB: 500-2000 WB positive control: MCF-7 and 231 cells IHC: 50-200 Positive control: Human colon cancer Predicted cell location: Cytoplasm
<b>Reactivity:</b>	Human, Mouse
<b>Host:</b>	Rabbit
<b>Isotype:</b>	IgG
<b>Clonality:</b>	Polyclonal
<b>Immunogen:</b>	Fusion protein of human GABPB2
<b>Formulation:</b>	pH7.4 PBS, 0.05% NaN <sub>3</sub> , 40% Glycerol
<b>Concentration:</b>	lot specific
<b>Purification:</b>	Antigen affinity purification
<b>Conjugation:</b>	Unconjugated
<b>Storage:</b>	Store at -20°C as received.
<b>Stability:</b>	Stable for 12 months from date of receipt.
<b>Predicted Protein Size:</b>	49 kDa
<b>Gene Name:</b>	GA binding protein transcription factor beta subunit 1
<b>Database Link:</b>	<a href="#">NP_005245</a> <a href="#">Entrez Gene 14391 Mouse</a> <a href="#">Entrez Gene 2553 Human</a> <a href="#">Q06547</a>
<b>Background:</b>	The GABPB gene encodes at least 4 beta subunit isoforms that were originally thought to be encoded by 2 separate genes, GABPB1 and GABPB2. The gene on Hsa1q was named GABPB2 and the gene on Hsa15q was named GABPB1. The predicted GABPB1 and GABPB2 subunits contain 383 and 347 amino acids, respectively, and are highly homologous.
<b>Synonyms:</b>	BABPB2; E4TF1; E4TF1-47; E4TF1-53; E4TF1B; GABPB; GABPB-1; GABPB2; NRF2B1; NRF2B2



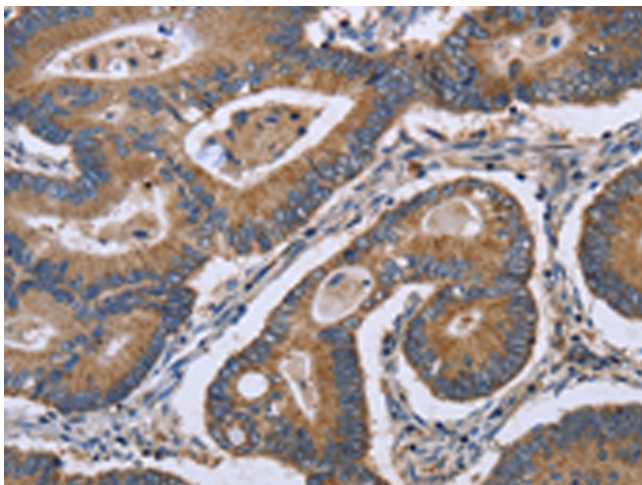
[View online »](#)

Protein Families: Transcription Factors

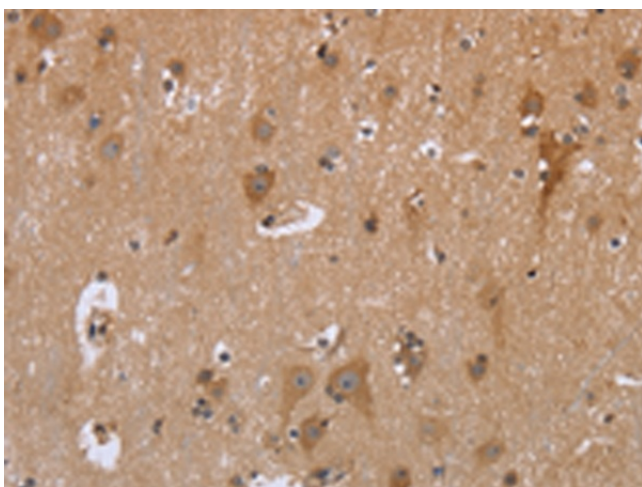
### Product images:



Gel: 8%SDS-PAGE  
Lysate: 40  $\mu$ g  
Lane 1-2: MCF7 cells  
231 cells  
Primary antibody: TA350001 (GABPB2 Antibody)  
at dilution 1/550  
Secondary antibody: Goat anti rabbit IgG at  
1/8000 dilution  
Exposure time: 1 minute



Immunohistochemistry of paraffin-embedded  
Human colon cancer tissue using TA350001  
(GABPB2 Antibody) at dilution 1/30. (Original  
magnification:  $\times$ 200)



Immunohistochemistry of paraffin-embedded Human brain tissue using TA350001 (GABPB2 Antibody) at dilution 1/30. (Original magnification:  $\times 200$ )