

Product datasheet for **TA350000**

GAB2 Rabbit Polyclonal Antibody

Product data:

Product Type:	Primary Antibodies
Applications:	IHC, WB
Recommended Dilution:	WB: 500-2000 WB positive control: Hela and K562 cells IHC: 50-200 Positive control: Human ovarian cancer Predicted cell location: Cytoplasm
Reactivity:	Human, Mouse, Rat
Host:	Rabbit
Isotype:	IgG
Clonality:	Polyclonal
Immunogen:	Fusion protein of human GAB2
Formulation:	pH7.4 PBS, 0.05% NaN ₃ , 40% Glycerol
Concentration:	lot specific
Purification:	Antigen affinity purification
Conjugation:	Unconjugated
Storage:	Store at -20°C as received.
Stability:	Stable for 12 months from date of receipt.
Predicted Protein Size:	74 kDa
Gene Name:	GRB2 associated binding protein 2
Database Link:	NP_536739 Entrez Gene 14389 Mouse Entrez Gene 84477 Rat Entrez Gene 9846 Human Q9UQC2



[View online »](#)

Background:

This gene is a member of the GRB2-associated binding protein (GAB) gene family. These proteins contain pleckstrin homology (PH) domain, and bind SHP2 tyrosine phosphatase and GRB2 adapter protein. They act as adapters for transmitting various signals in response to stimuli through cytokine and growth factor receptors, and T- and B-cell antigen receptors. The protein encoded by this gene is the principal activator of phosphatidylinositol-3 kinase in response to activation of the high affinity IgE receptor. Two alternatively spliced transcripts encoding different isoforms have been described for this gene.

Synonyms:

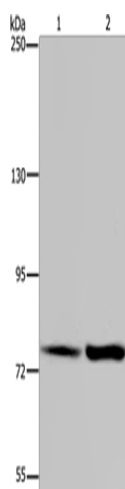
KIAA0571

Protein Families:

Druggable Genome

Protein Pathways:

Chronic myeloid leukemia, Fc epsilon RI signaling pathway, Fc gamma R-mediated phagocytosis

Product images:

Gel: 6%SDS-PAGE

Lysate: 40 µg

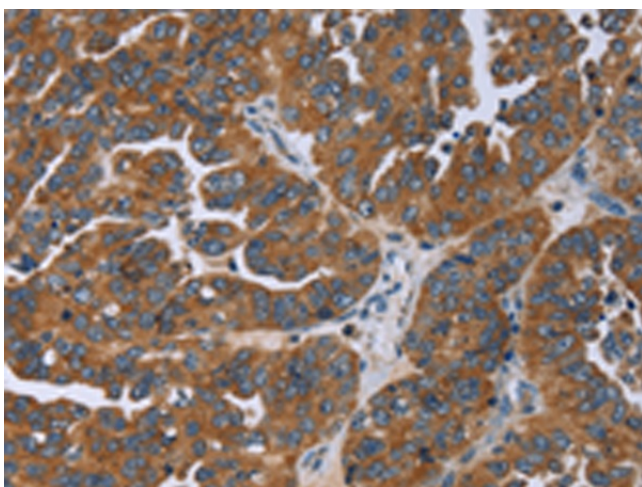
Lane 1-2: HeLa cells

K562 cells

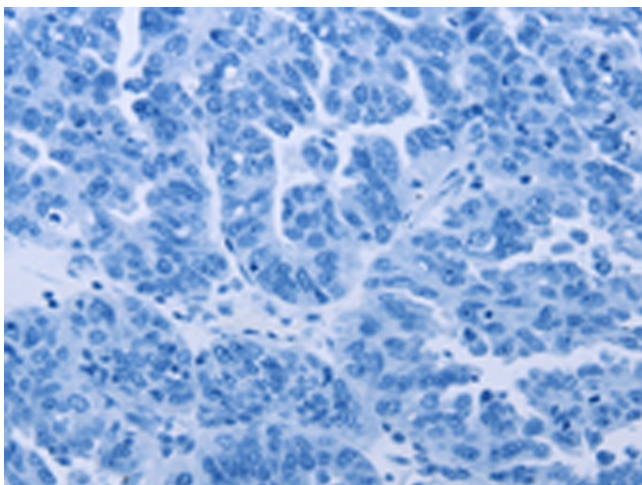
Primary antibody: TA350000 (GAB2 Antibody) at dilution 1/300

Secondary antibody: Goat anti rabbit IgG at 1/8000 dilution

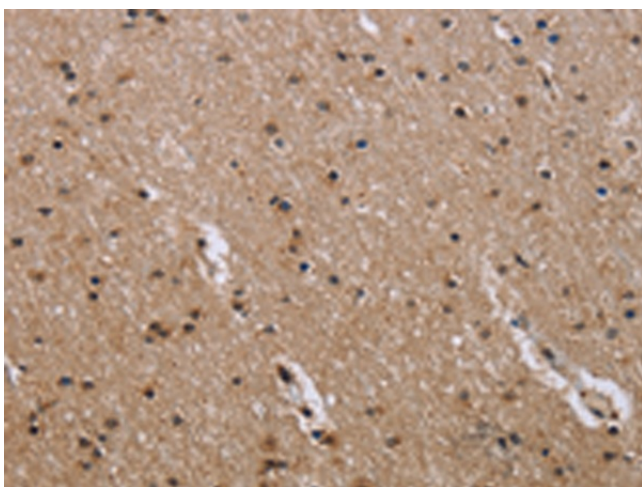
Exposure time: 3 minutes



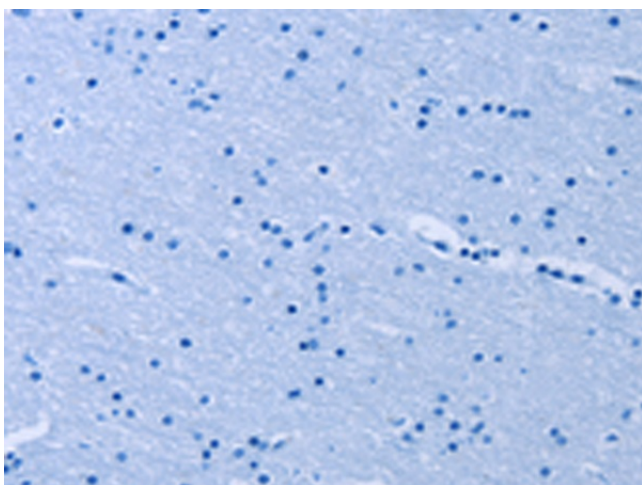
Immunohistochemistry of paraffin-embedded Human ovarian cancer tissue using TA350000 (GAB2 Antibody) at dilution 1/50 (Original magnification: ×200)



Immunohistochemistry of paraffin-embedded Human ovarian cancer tissue using TA350000 (GAB2 Antibody) at dilution 1/50, treated with fusion protein. (Original magnification: $\times 200$)



Immunohistochemistry of paraffin-embedded Human brain tissue using TA350000 (GAB2 Antibody) at dilution 1/50 (Original magnification: $\times 200$)



Immunohistochemistry of paraffin-embedded Human brain tissue using TA350000 (GAB2 Antibody) at dilution 1/50, treated with fusion protein. (Original magnification: $\times 200$)