

## Product datasheet for **TA349999**

### FH Rabbit Polyclonal Antibody

#### Product data:

Product Type:	Primary Antibodies
Applications:	IHC, WB
Recommended Dilution:	WB: 500-2000 WB positive control: Mouse liver, brain and heart tissue, RAW264.7 cells IHC: 50-200 Positive control: Human liver cancer Predicted cell location: Cytoplasm
Reactivity:	Human, Mouse, Rat
Host:	Rabbit
Isotype:	IgG
Clonality:	Polyclonal
Immunogen:	Fusion protein of human FH
Formulation:	pH7.4 PBS, 0.05% NaN <sub>3</sub> , 40% Glycerol
Concentration:	lot specific
Purification:	Antigen affinity purification
Conjugation:	Unconjugated
Storage:	Store at -20°C as received.
Stability:	Stable for 12 months from date of receipt.
Predicted Protein Size:	55 kDa
Gene Name:	fumarate hydratase
Database Link:	<a href="#">NP_000134</a> <a href="#">Entrez Gene 24368 Rat</a> <a href="#">Entrez Gene 14193 Mouse</a> <a href="#">Entrez Gene 2271 Human</a> <a href="#">P07954</a>



[View online »](#)

**Background:**

The protein encoded by this gene is an enzymatic component of the tricarboxylic acid (TCA) cycle, or Krebs cycle, and catalyzes the formation of L-malate from fumarate. It exists in both a cytosolic form and an N-terminal extended form, differing only in the translation start site used. The N-terminal extended form is targeted to the mitochondrion, where the removal of the extension generates the same form as in the cytoplasm. It is similar to some thermostable class II fumarases and functions as a homotetramer. Mutations in this gene can cause fumarase deficiency and lead to progressive encephalopathy.

**Synonyms:**

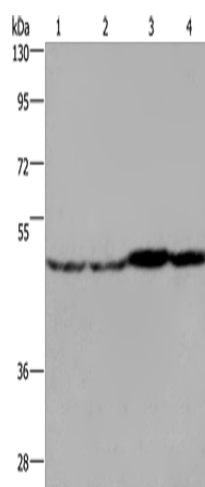
FMRD; HLRCC; LRCC; MCL; MCUL1

**Protein Families:**

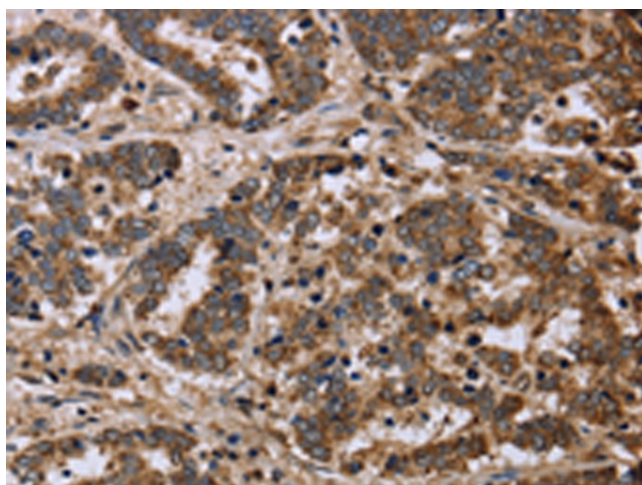
Druggable Genome

**Protein Pathways:**

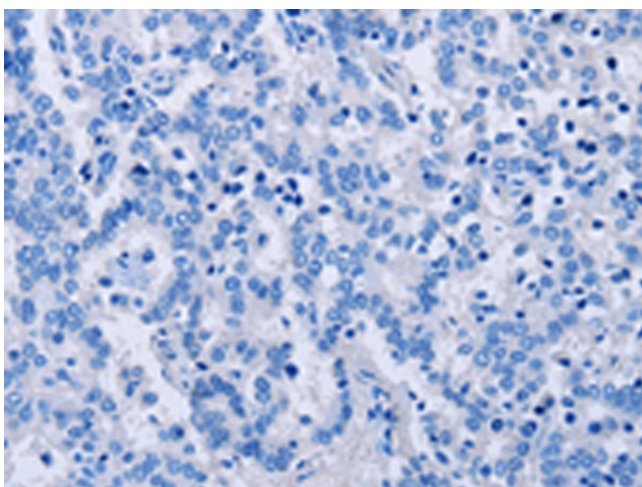
Citrate cycle (TCA cycle), Metabolic pathways, Pathways in cancer, Renal cell carcinoma

**Product images:**


Gel: 8%SDS-PAGE  
 Lysate: 40 µg  
 Lane 1-4: Mouse liver tissue  
 Mouse brain tissue  
 Mouse heart tissue  
 RAW264.7 cells  
 Primary antibody: TA349999 (FH Antibody) at dilution 1/850  
 Secondary antibody: Goat anti rabbit IgG at 1/8000 dilution  
 Exposure time: 20 seconds



Immunohistochemistry of paraffin-embedded Human liver cancer tissue using TA349999 (FH Antibody) at dilution 1/40 (Original magnification: ×200)



Immunohistochemistry of paraffin-embedded Human liver cancer tissue using TA349999 (FH Antibody) at dilution 1/40, treated with fusion protein. (Original magnification:  $\times 200$ )