

Product datasheet for **TA349998**

FUCA1 Rabbit Polyclonal Antibody

Product data:

Product Type:	Primary Antibodies
Applications:	IHC, WB
Recommended Dilution:	WB: 500-2000 WB positive control: Human placenta tissue IHC: 50-200 Positive control: Human cervical cancer Predicted cell location: Cytoplasm
Reactivity:	Human, Mouse
Host:	Rabbit
Isotype:	IgG
Clonality:	Polyclonal
Immunogen:	Fusion protein of human FUCA1
Formulation:	pH7.4 PBS, 0.05% NaN ₃ , 40% Glycerol
Concentration:	lot specific
Purification:	Antigen affinity purification
Conjugation:	Unconjugated
Storage:	Store at -20°C as received.
Stability:	Stable for 12 months from date of receipt.
Predicted Protein Size:	54 kDa
Gene Name:	fucosidase, alpha-L- 1, tissue
Database Link:	NP_000138 Entrez Gene 71665 Mouse Entrez Gene 2517 Human P04066
Background:	The protein encoded by this gene is a lysosomal enzyme involved in the degradation of fucose-containing glycoproteins and glycolipids. Mutations in this gene are associated with fucosidosis (FUCA1D), which is an autosomal recessive lysosomal storage disease. A pseudogene of this locus is present on chr 2.
Synonyms:	FUCA

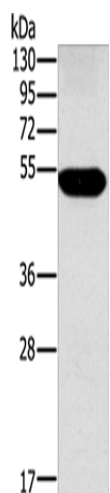


[View online »](#)

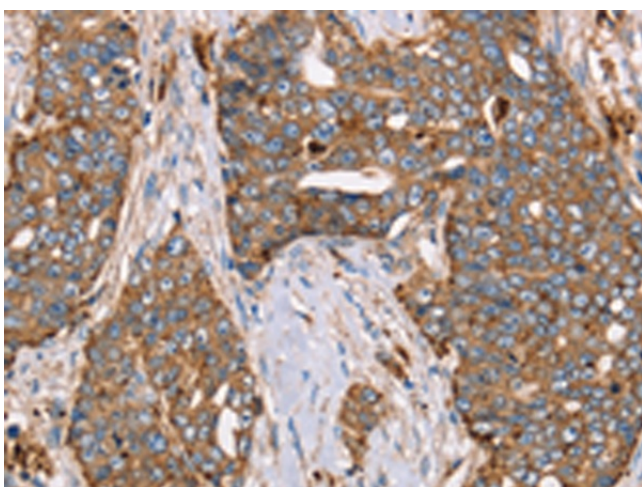
Protein Families: Druggable Genome

Protein Pathways: Lysosome, Other glycan degradation

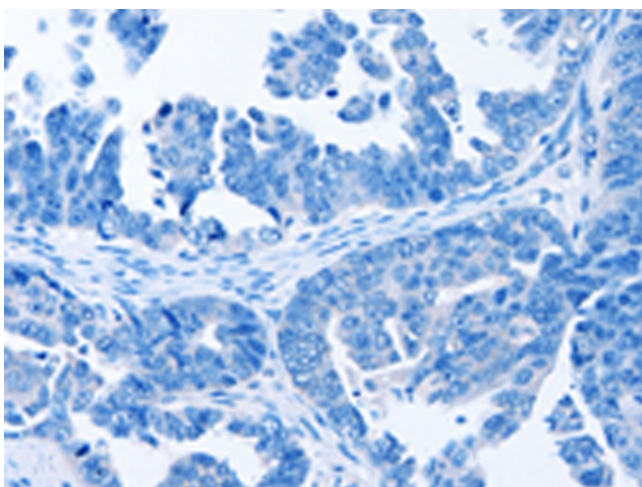
Product images:



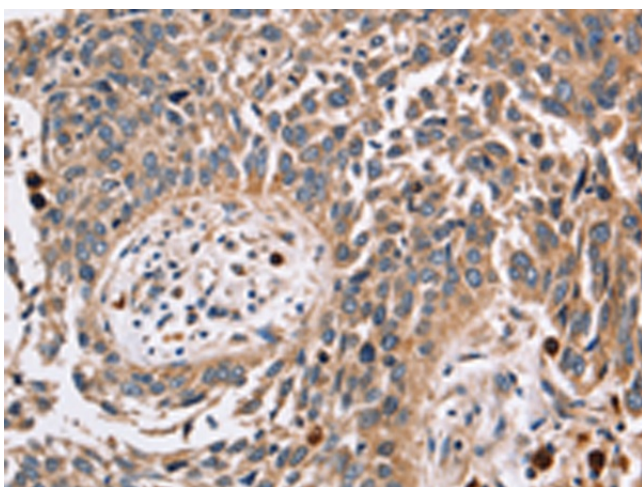
Gel: 8%SDS-PAGE
Lysate: 60 μ g
Lane: Human placenta tissue
Primary antibody: TA349998 (FUCA1 Antibody) at dilution 1/500
Secondary antibody: Goat anti rabbit IgG at 1/8000 dilution
Exposure time: 2minutes



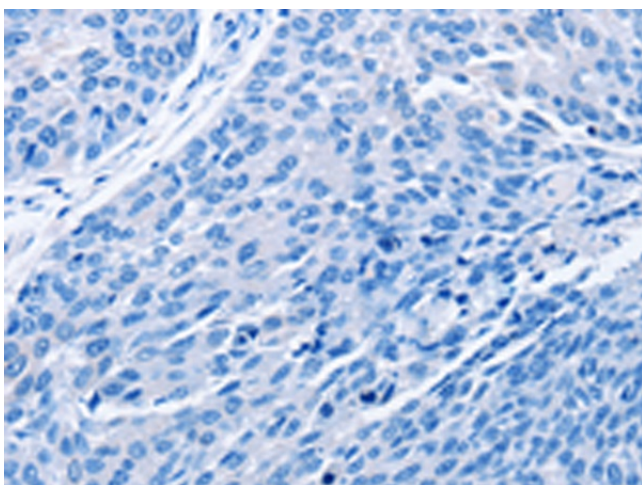
Immunohistochemistry of paraffin-embedded Human cervical cancer tissue using TA349998 (FUCA1 Antibody) at dilution 1/30 (Original magnification: \times 200)



Immunohistochemistry of paraffin-embedded Human cervical cancer tissue using TA349998 (FUCA1 Antibody) at dilution 1/30, treated with fusion protein. (Original magnification: $\times 200$)



Immunohistochemistry of paraffin-embedded Human lung cancer tissue using TA349998 (FUCA1 Antibody) at dilution 1/30 (Original magnification: $\times 200$)



Immunohistochemistry of paraffin-embedded Human lung cancer tissue using TA349998 (FUCA1 Antibody) at dilution 1/30, treated with fusion protein. (Original magnification: $\times 200$)