

Product datasheet for **TA349996**

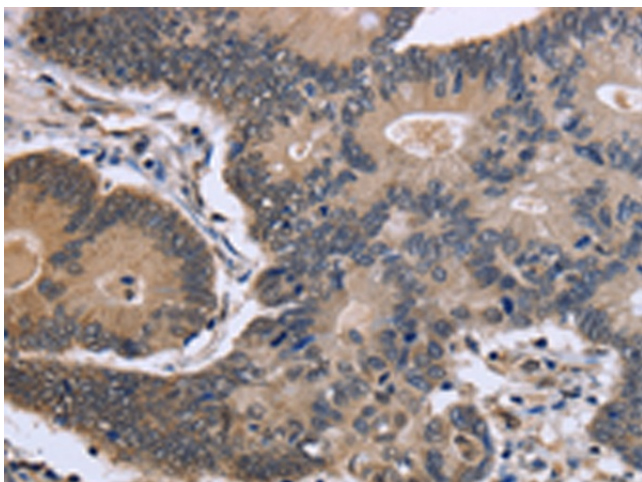
FSTL1 Rabbit Polyclonal Antibody

Product data:

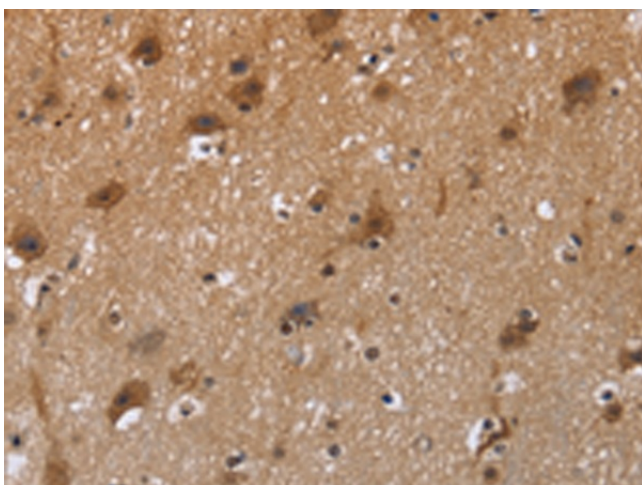
Product Type:	Primary Antibodies
Applications:	IHC
Recommended Dilution:	IHC: 50-200 Positive control: Human colon cancer Predicted cell location: Cytoplasm
Reactivity:	Human, Mouse, Rat
Host:	Rabbit
Isotype:	IgG
Clonality:	Polyclonal
Immunogen:	Fusion protein of human FSTL1
Formulation:	pH7.4 PBS, 0.05% NaN ₃ , 40% Glycerol
Concentration:	lot specific
Purification:	Antigen affinity purification
Conjugation:	Unconjugated
Storage:	Store at -20°C as received.
Stability:	Stable for 12 months from date of receipt.
Gene Name:	follistatin like 1
Database Link:	NP_009016 Entrez Gene 14314 Mouse Entrez Gene 79210 Rat Entrez Gene 11167 Human Q12841
Background:	This gene encodes a protein with similarity to follistatin, an activin-binding protein. It contains an FS module, a follistatin-like sequence containing 10 conserved cysteine residues. This gene product is thought to be an autoantigen associated with rheumatoid arthritis.
Synonyms:	FRP; FSL1; MIR198; OCC-1; OCC1; tsc36
Protein Families:	Secreted Protein



[View online »](#)

Product images:

Immunohistochemistry of paraffin-embedded Human colon cancer tissue using TA349996 (FSTL1 Antibody) at dilution 1/40. (Original magnification: ×200)



Immunohistochemistry of paraffin-embedded Human brain tissue using TA349996 (FSTL1 Antibody) at dilution 1/40. (Original magnification: ×200)