

Product datasheet for **TA349995S**

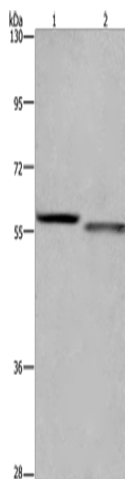
FRK Rabbit Polyclonal Antibody

Product data:

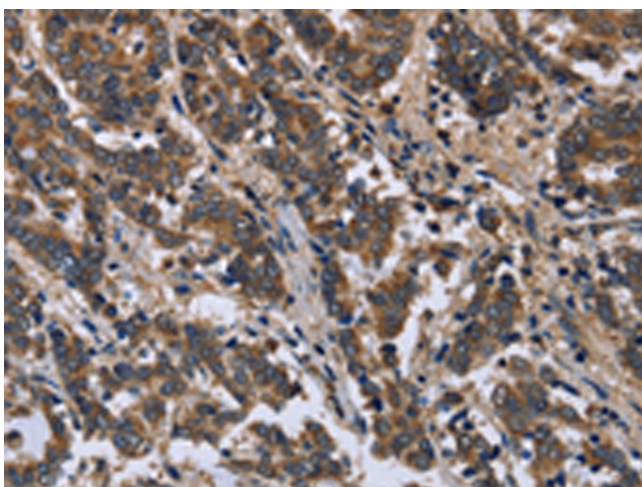
Product Type:	Primary Antibodies
Applications:	IHC, WB
Recommended Dilution:	WB: 500-2000 WB positive control: K562 and A431 cells IHC: 50-200 Positive control: Human liver cancer Predicted cell location: Cytoplasm
Reactivity:	Human, Mouse, Rat
Host:	Rabbit
Isotype:	IgG
Clonality:	Polyclonal
Immunogen:	Fusion protein of human FRK
Formulation:	pH7.4 PBS, 0.05% NaN ₃ , 40% Glycerol
Purification:	Antigen affinity purification
Conjugation:	Unconjugated
Storage:	Store at -20°C as received.
Stability:	Stable for 12 months from date of receipt.
Predicted Protein Size:	58 kDa
Gene Name:	fyn related Src family tyrosine kinase
Database Link:	NP_002022 Entrez Gene 14302 MouseEntrez Gene 79209 RatEntrez Gene 2444 Human P42685
Background:	The protein encoded by this gene belongs to the TYR family of protein kinases. This tyrosine kinase is a nuclear protein and may function during G1 and S phase of the cell cycle and suppress growth.
Synonyms:	GTK; PTK5; RAK
Protein Families:	Druggable Genome, Protein Kinase



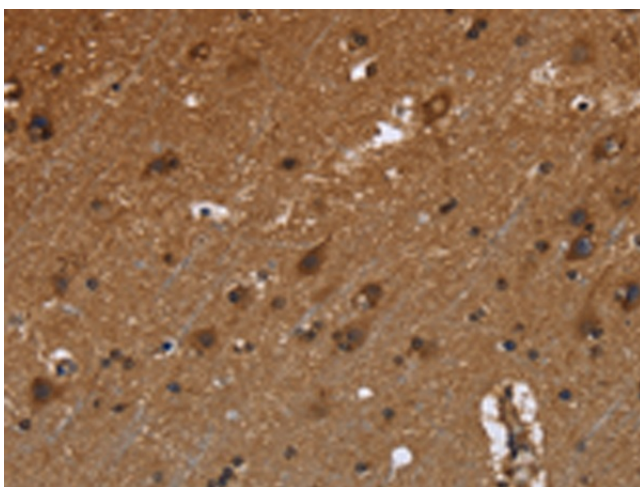
[View online »](#)

Product images:

Gel: 6%SDS-PAGE
Lysate: 40 μ g
Lane 1-2: K562 cells
A431 cells
Primary antibody: [TA349995] (FRK Antibody) at dilution 1/1200
Secondary antibody: Goat anti rabbit IgG at 1/8000 dilution
Exposure time: 40 seconds



Immunohistochemistry of paraffin-embedded Human liver cancer tissue using [TA349995] (FRK Antibody) at dilution 1/50. (Original magnification: \times 200)



Immunohistochemistry of paraffin-embedded Human brain tissue using [TA349995] (FRK Antibody) at dilution 1/50. (Original magnification: ×200)