

Product datasheet for **TA349995**

FRK Rabbit Polyclonal Antibody

Product data:

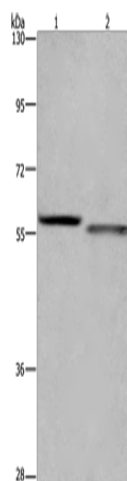
| | |
|-------------------------|--|
| Product Type: | Primary Antibodies |
| Applications: | IHC, WB |
| Recommended Dilution: | WB: 500-2000 WB positive control: K562 and A431 cells IHC: 50-200 Positive control: Human liver cancer Predicted cell location: Cytoplasm |
| Reactivity: | Human, Mouse, Rat |
| Host: | Rabbit |
| Isotype: | IgG |
| Clonality: | Polyclonal |
| Immunogen: | Fusion protein of human FRK |
| Formulation: | pH7.4 PBS, 0.05% NaN ₃ , 40% Glycerol |
| Concentration: | lot specific |
| Purification: | Antigen affinity purification |
| Conjugation: | Unconjugated |
| Storage: | Store at -20°C as received. |
| Stability: | Stable for 12 months from date of receipt. |
| Predicted Protein Size: | 58 kDa |
| Gene Name: | fyn related Src family tyrosine kinase |
| Database Link: | NP_002022 Entrez Gene 14302 Mouse Entrez Gene 79209 Rat Entrez Gene 2444 Human P42685 |
| Background: | The protein encoded by this gene belongs to the TYR family of protein kinases. This tyrosine kinase is a nuclear protein and may function during G1 and S phase of the cell cycle and suppress growth. |
| Synonyms: | GTK; PTK5; RAK |



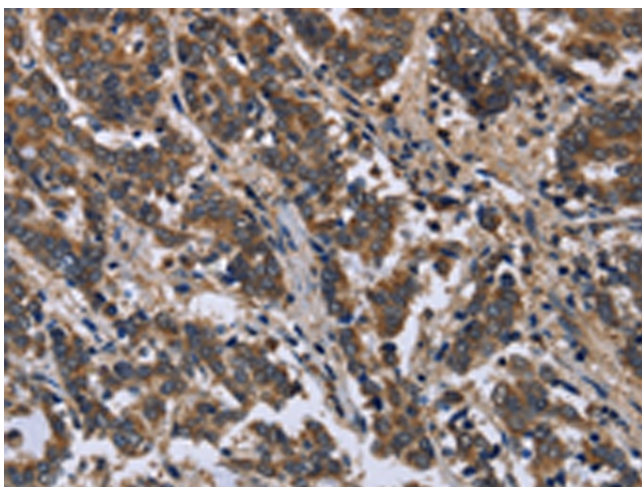
[View online »](#)

Protein Families: Druggable Genome, Protein Kinase

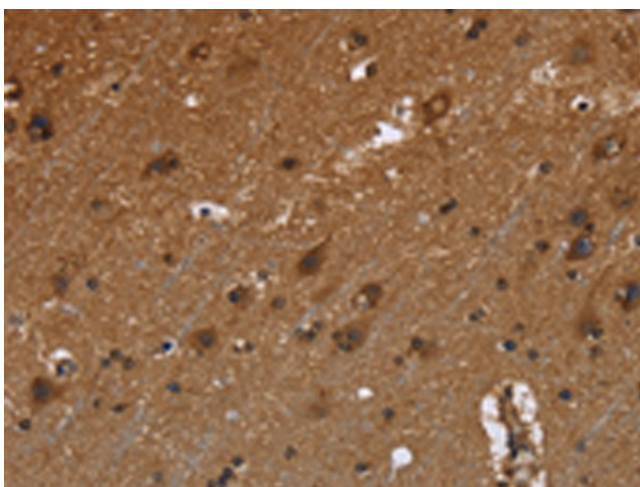
Product images:



Gel: 6%SDS-PAGE
Lysate: 40 μ g
Lane 1-2: K562 cells
A431 cells
Primary antibody: TA349995 (FRK Antibody) at dilution 1/1200
Secondary antibody: Goat anti rabbit IgG at 1/8000 dilution
Exposure time: 40 seconds



Immunohistochemistry of paraffin-embedded Human liver cancer tissue using TA349995 (FRK Antibody) at dilution 1/50. (Original magnification: \times 200)



Immunohistochemistry of paraffin-embedded Human brain tissue using TA349995 (FRK Antibody) at dilution 1/50. (Original magnification: ×200)