

## Product datasheet for **TA349994**

### **FMRP (FMR1) Rabbit Polyclonal Antibody**

#### **Product data:**

Product Type:	Primary Antibodies
Applications:	IHC
Recommended Dilution:	IHC: 50-200 Positive control: Human liver cancer Predicted cell location: Cytoplasm
Reactivity:	Human, Mouse, Rat
Host:	Rabbit
Isotype:	IgG
Clonality:	Polyclonal
Immunogen:	Fusion protein of human FMR1
Formulation:	pH7.4 PBS, 0.05% NaN <sub>3</sub> , 40% Glycerol
Concentration:	lot specific
Purification:	Antigen affinity purification
Conjugation:	Unconjugated
Storage:	Store at -20°C as received.
Stability:	Stable for 12 months from date of receipt.
Gene Name:	fragile X mental retardation 1
Database Link:	<a href="#">NP_002015</a> <a href="#">Entrez Gene 14265 Mouse</a> <a href="#">Entrez Gene 24948 Rat</a> <a href="#">Entrez Gene 2332 Human</a> <a href="#">Q06787</a>

**Background:** The protein encoded by this gene binds RNA and is associated with polysomes. The encoded protein may be involved in mRNA trafficking from the nucleus to the cytoplasm. A trinucleotide repeat (CGG) in the 5' UTR is normally found at 6-53 copies, but an expansion to 55-230 repeats is the cause of fragile X syndrome. Expansion of the trinucleotide repeat may also cause one form of premature ovarian failure (POF1). Multiple alternatively spliced transcript variants that encode different protein isoforms and which are located in different cellular locations have been described for this gene.

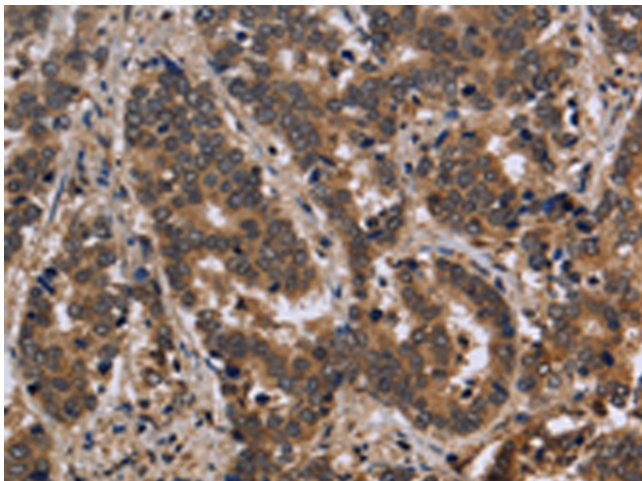
**Synonyms:** FMRP; FRAXA; POF; POF1; POFX



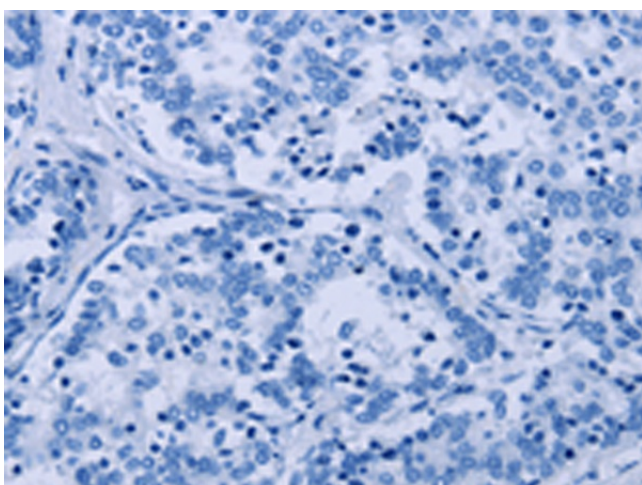
[View online »](#)

Protein Families: Druggable Genome

### Product images:



Immunohistochemistry of paraffin-embedded Human liver cancer tissue using TA349994 (FMR1 Antibody) at dilution 1/30 (Original magnification: ×200)



Immunohistochemistry of paraffin-embedded Human liver cancer tissue using TA349994 (FMR1 Antibody) at dilution 1/30, treated with fusion protein. (Original magnification: ×200)