

## Product datasheet for **TA349992**

### FLI1 Rabbit Polyclonal Antibody

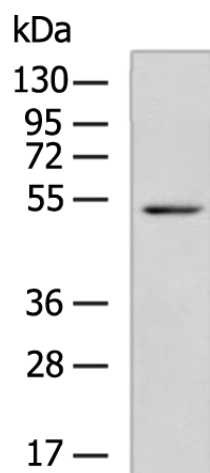
#### Product data:

Product Type:	Primary Antibodies
Applications:	WB
Recommended Dilution:	WB: 500-2000 WB positive control: NIH/3T3 cell lysate
Reactivity:	Human, Mouse
Host:	Rabbit
Isotype:	IgG
Clonality:	Polyclonal
Immunogen:	Fusion protein of human FLI1
Formulation:	pH7.4 PBS, 0.05% NaN <sub>3</sub> , 40% Glycerol
Concentration:	lot specific
Purification:	Antigen affinity purification
Conjugation:	Unconjugated
Storage:	Store at -20°C as received.
Stability:	Stable for 12 months from date of receipt.
Predicted Protein Size:	51 kDa
Gene Name:	Fli-1 proto-oncogene, ETS transcription factor
Database Link:	<a href="#">NP_002008</a> <a href="#">Entrez Gene 14247 Mouse</a> <a href="#">Entrez Gene 2313 Human</a> <a href="#">Q01543</a>
Background:	This gene encodes a transcription factor containing an ETS DNA-binding domain. The gene can undergo a t(11;22)(q24;q12) translocation with the Ewing sarcoma gene on chromosome 22, which results in a fusion gene that is present in the majority of Ewing sarcoma cases. An acute lymphoblastic leukemia-associated t(4;11)(q21;q23) translocation involving this gene has also been identified. Alternative splicing results in multiple transcript variants.
Synonyms:	EWSR2; SIC-1
Protein Families:	Transcription Factors



[View online »](#)

## Product images:



Gel: 8%SDS-PAGE  
Lysate: 40  $\mu$ g  
Lane: NIH/3T3 cell lysate  
Primary antibody: TA349992 (FLI1 Antibody) at dilution 1/500  
Secondary antibody: Goat anti rabbit IgG at 1/5000 dilution  
Exposure time: 20 seconds