

Product datasheet for **TA349990S**

FKBP38 (FKBP8) Rabbit Polyclonal Antibody

Product data:

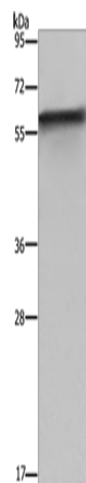
Product Type:	Primary Antibodies
Applications:	IHC, WB
Recommended Dilution:	WB: 1000-5000 WB positive control: Mouse liver tissue IHC: 100-300 Positive control: Human colon cancer Predicted cell location: Cytoplasm
Reactivity:	Human, Mouse, Rat
Host:	Rabbit
Isotype:	IgG
Clonality:	Polyclonal
Immunogen:	Fusion protein of human FKBP8
Formulation:	pH7.4 PBS, 0.05% NaN ₃ , 40% Glycerol
Purification:	Antigen affinity purification
Conjugation:	Unconjugated
Storage:	Store at -20°C as received.
Stability:	Stable for 12 months from date of receipt.
Predicted Protein Size:	45 kDa
Gene Name:	FK506 binding protein 8
Database Link:	NP_036313 Entrez Gene 14232 MouseEntrez Gene 290652 RatEntrez Gene 23770 Human Q14318
Background:	The protein encoded by this gene is a member of the immunophilin protein family, which play a role in immunoregulation and basic cellular processes involving protein folding and trafficking. Unlike the other members of the family, this encoded protein does not seem to have PPIase/rotamase activity. It may have a role in neurons associated with memory function.
Synonyms:	FKBP38; FKBP38



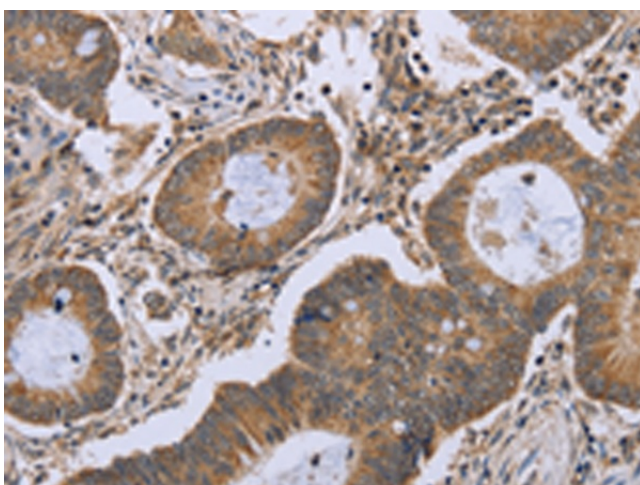
[View online »](#)

Protein Families: Druggable Genome, Transmembrane

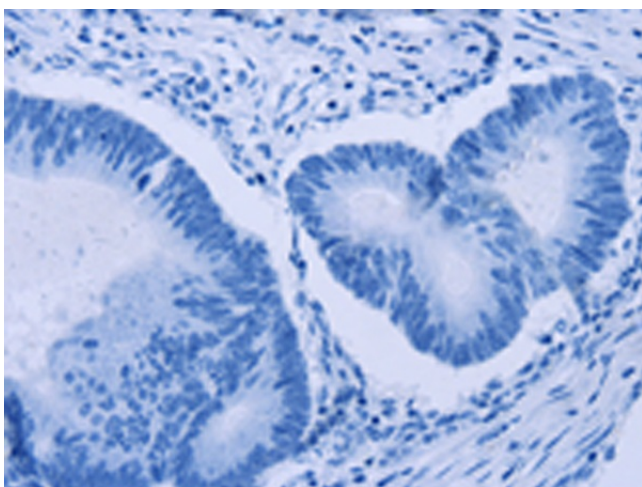
Product images:



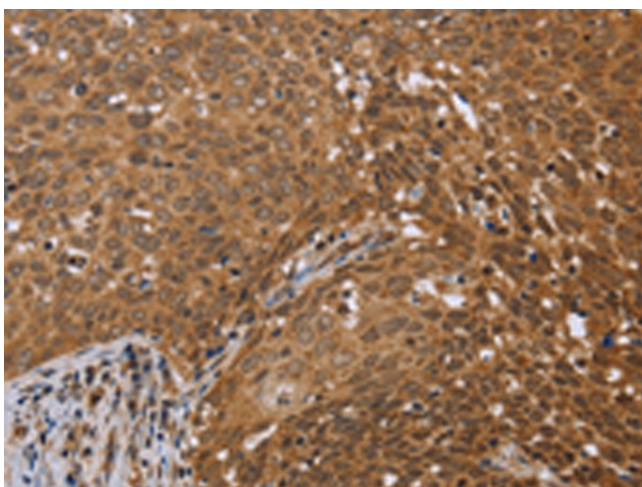
Gel: 8%SDS-PAGE
Lysate: 40 μ g
Lane: Mouse liver tissue
Primary antibody: [TA349990] (FKBP8 Antibody) at dilution 1/1150
Secondary antibody: Goat anti rabbit IgG at 1/8000 dilution
Exposure time: 1 minute



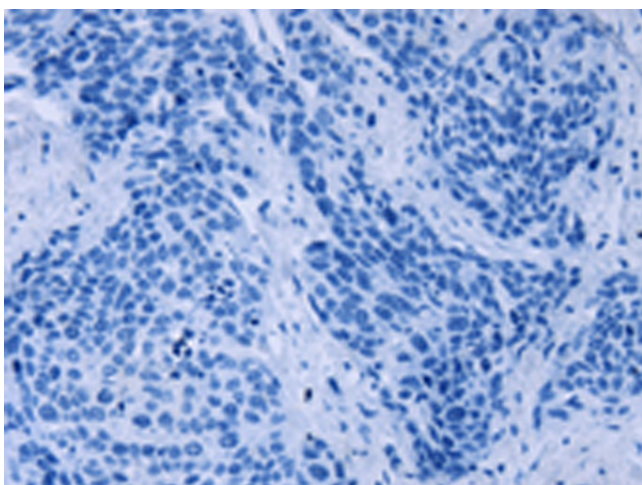
Immunohistochemistry of paraffin-embedded Human colon cancer tissue using [TA349990] (FKBP8 Antibody) at dilution 1/50 (Original magnification: \times 200)



Immunohistochemistry of paraffin-embedded Human colon cancer tissue using [TA349990] (FKBP8 Antibody) at dilution 1/50, treated with fusion protein. (Original magnification: $\times 200$)



Immunohistochemistry of paraffin-embedded Human cervical cancer tissue using [TA349990] (FKBP8 Antibody) at dilution 1/50 (Original magnification: $\times 200$)



Immunohistochemistry of paraffin-embedded Human cervical cancer tissue using [TA349990] (FKBP8 Antibody) at dilution 1/50, treated with fusion protein. (Original magnification: $\times 200$)