

## Product datasheet for **TA349987**

### Fibrinogen beta chain (FGB) Rabbit Polyclonal Antibody

#### Product data:

Product Type:	Primary Antibodies
Applications:	IHC, WB
Recommended Dilution:	WB: 1000-5000 WB positive control: Mouse heart tissue IHC: 50-200 Positive control: Human colon cancer Predicted cell location: Cytoplasm
Reactivity:	Human, Mouse, Rat
Host:	Rabbit
Isotype:	IgG
Clonality:	Polyclonal
Immunogen:	Fusion protein of human FGB
Formulation:	pH7.4 PBS, 0.05% NaN <sub>3</sub> , 40% Glycerol
Concentration:	lot specific
Purification:	Antigen affinity purification
Conjugation:	Unconjugated
Storage:	Store at -20°C as received.
Stability:	Stable for 12 months from date of receipt.
Predicted Protein Size:	56 kDa
Gene Name:	fibrinogen beta chain
Database Link:	<a href="#">NP_005132</a> <a href="#">Entrez Gene 24366 Rat</a> <a href="#">Entrez Gene 110135 Mouse</a> <a href="#">Entrez Gene 2244 Human</a> <a href="#">P02675</a>



[View online »](#)

**Background:**

The protein encoded by this gene is the beta component of fibrinogen, a blood-borne glycoprotein comprised of three pairs of nonidentical polypeptide chains. Following vascular injury, fibrinogen is cleaved by thrombin to form fibrin which is the most abundant component of blood clots. In addition, various cleavage products of fibrinogen and fibrin regulate cell adhesion and spreading, display vasoconstrictor and chemotactic activities, and are mitogens for several cell types. Mutations in this gene lead to several disorders, including afibrinogenemia, dysfibrinogenemia, hypodysfibrinogenemia and thrombotic tendency.

**Synonyms:**

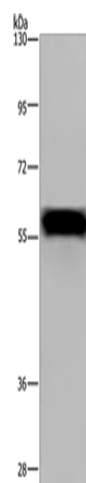
HEL-S-78p

**Protein Families:**

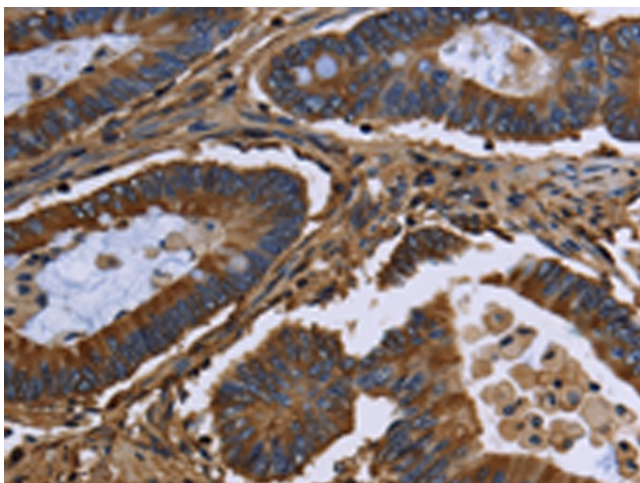
Druggable Genome, Secreted Protein

**Protein Pathways:**

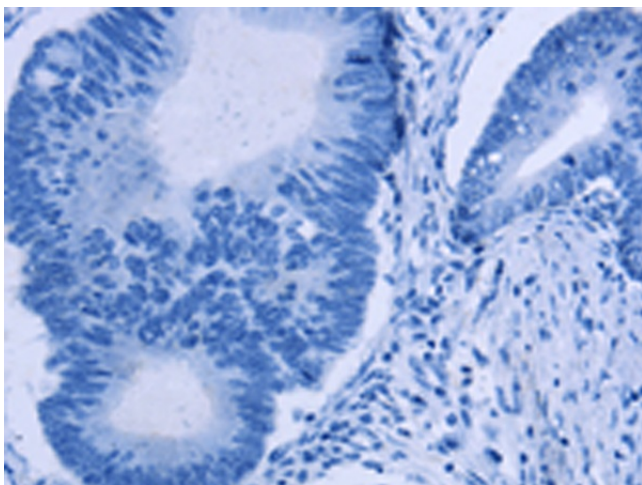
Complement and coagulation cascades

**Product images:**

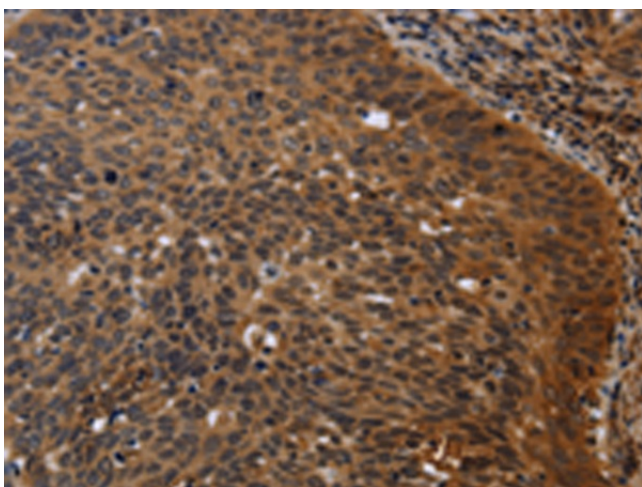
Gel: 6%SDS-PAGE  
Lysate: 40 µg  
Lane: Mouse heart tissue  
Primary antibody: TA349987 (FGB Antibody) at dilution 1/1000  
Secondary antibody: Goat anti rabbit IgG at 1/8000 dilution  
Exposure time: 5 seconds



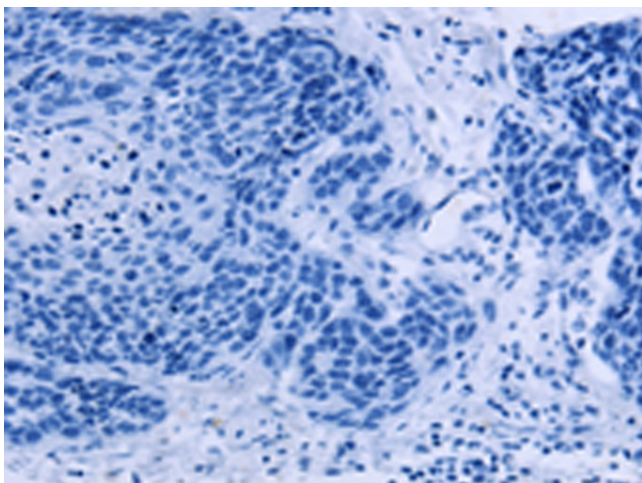
Immunohistochemistry of paraffin-embedded Human colon cancer tissue using TA349987 (FGB Antibody) at dilution 1/20 (Original magnification: ×200)



Immunohistochemistry of paraffin-embedded Human colon cancer tissue using TA349987 (FGB Antibody) at dilution 1/20, treated with fusion protein. (Original magnification: x200)



Immunohistochemistry of paraffin-embedded Human cervical cancer tissue using TA349987 (FGB Antibody) at dilution 1/20 (Original magnification: x200)



Immunohistochemistry of paraffin-embedded Human cervical cancer tissue using TA349987 (FGB Antibody) at dilution 1/20, treated with fusion protein. (Original magnification: x200)