

Product datasheet for **TA349983S**

FHIT Rabbit Polyclonal Antibody

Product data:

Product Type:	Primary Antibodies
Applications:	IHC, WB
Recommended Dilution:	WB: 500-2000 WB positive control: Mouse kidney and human kidney tissue IHC: 50-200 Positive control: Human colon cancer Predicted cell location: Cytoplasm
Reactivity:	Human, Mouse, Rat
Host:	Rabbit
Isotype:	IgG
Clonality:	Polyclonal
Immunogen:	Fusion protein of human FHIT
Formulation:	pH7.4 PBS, 0.05% NaN ₃ , 40% Glycerol
Purification:	Antigen affinity purification
Conjugation:	Unconjugated
Storage:	Store at -20°C as received.
Stability:	Stable for 12 months from date of receipt.
Predicted Protein Size:	17 kDa
Gene Name:	fragile histidine triad
Database Link:	NP_002003 Entrez Gene 14198 MouseEntrez Gene 60398 RatEntrez Gene 2272 Human P49789

Background: This gene, a member of the histidine triad gene family, encodes a diadenosine 5',5'''-P₁,P₃-triphosphate hydrolase involved in purine metabolism. The gene encompasses the common fragile site FRA3B on chromosome 3, where carcinogen-induced damage can lead to translocations and aberrant transcripts of this gene. In fact, aberrant transcripts from this gene have been found in about half of all esophageal, stomach, and colon carcinomas. Alternatively spliced transcript variants have been found for this gene.



[View online »](#)

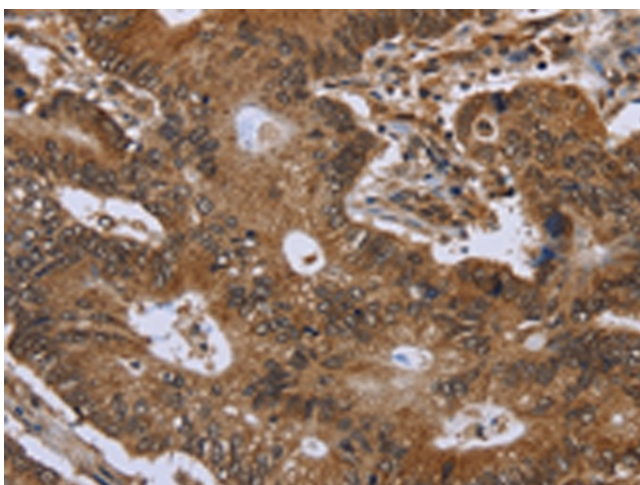
Synonyms: AP3Aase; FRA3B

Protein Pathways: Non-small cell lung cancer, Purine metabolism, Small cell lung cancer

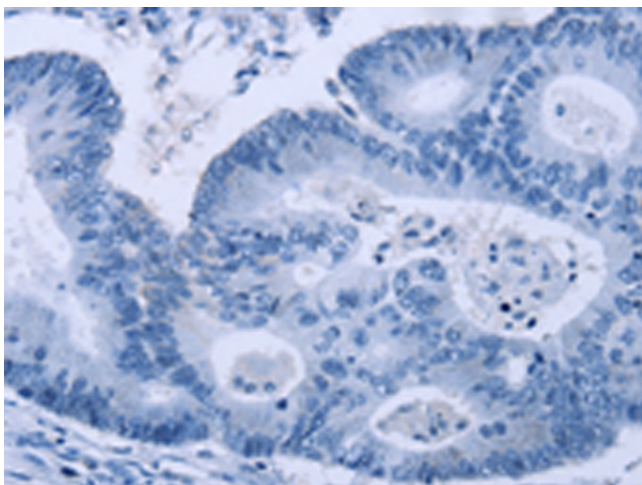
Product images:



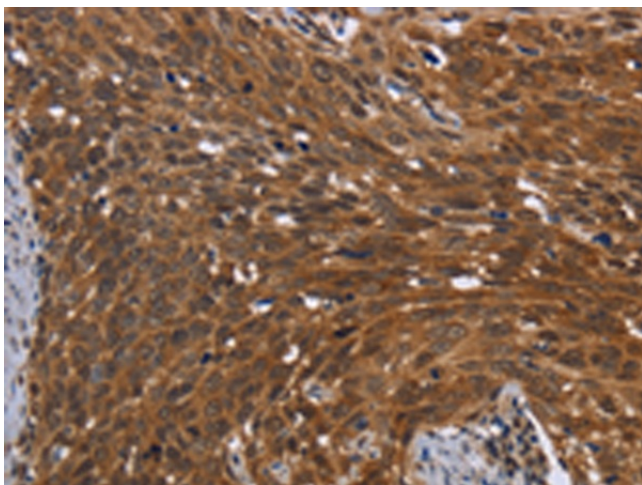
Gel: 8%SDS-PAGE
Lysate: 40 µg
Lane 1-2: Mouse kidney tissue
human kidney tissue
Primary antibody: [TA349983] (FHIT Antibody) at dilution 1/600
Secondary antibody: Goat anti rabbit IgG at 1/8000 dilution
Exposure time: 20 seconds



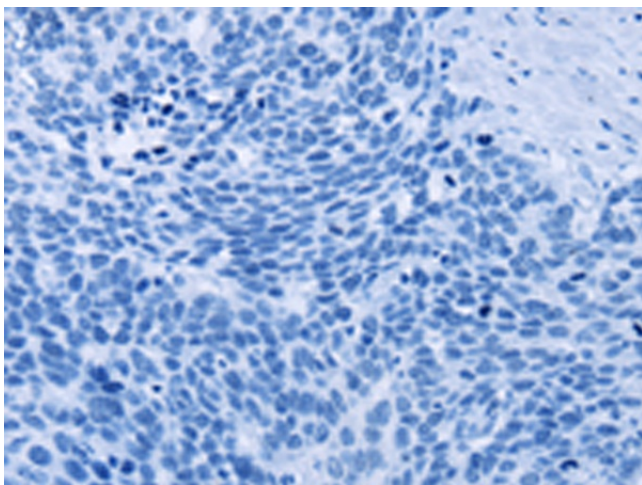
Immunohistochemistry of paraffin-embedded Human colon cancer tissue using [TA349983] (FHIT Antibody) at dilution 1/30 (Original magnification: ×200)



Immunohistochemistry of paraffin-embedded Human colon cancer tissue using [TA349983] (FHIT Antibody) at dilution 1/30, treated with fusion protein. (Original magnification: ×200)



Immunohistochemistry of paraffin-embedded Human cervical cancer tissue using [TA349983] (FHIT Antibody) at dilution 1/30 (Original magnification: ×200)



Immunohistochemistry of paraffin-embedded Human cervical cancer tissue using [TA349983] (FHIT Antibody) at dilution 1/30, treated with fusion protein. (Original magnification: ×200)