

Product datasheet for **TA349982**

FGL2 Rabbit Polyclonal Antibody

Product data:

Product Type:	Primary Antibodies
Applications:	IHC, WB
Recommended Dilution:	WB: 1000-5000 WB positive control: A375 cell lysate IHC: 50-100 Positive control: Human esophagus cancer Predicted cell location: Secreted
Reactivity:	Human, Mouse
Host:	Rabbit
Isotype:	IgG
Clonality:	Polyclonal
Immunogen:	Fusion protein of human FGL2
Formulation:	pH7.4 PBS, 0.05% NaN ₃ , 40% Glycerol
Concentration:	lot specific
Purification:	Antigen affinity purification
Conjugation:	Unconjugated
Storage:	Store at -20°C as received.
Stability:	Stable for 12 months from date of receipt.
Predicted Protein Size:	50 kDa
Gene Name:	fibrinogen like 2
Database Link:	NP_006673 Entrez Gene 14190 Mouse Entrez Gene 10875 Human Q14314

Background: The protein encoded by this gene is a secreted protein that is similar to the beta- and gamma-chains of fibrinogen. The carboxyl-terminus of the encoded protein consists of the fibrinogen-related domains (FRED). The encoded protein forms a tetrameric complex which is stabilized by interchain disulfide bonds. This protein may play a role in physiologic functions at mucosal sites.

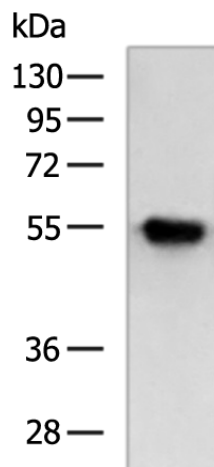


[View online »](#)

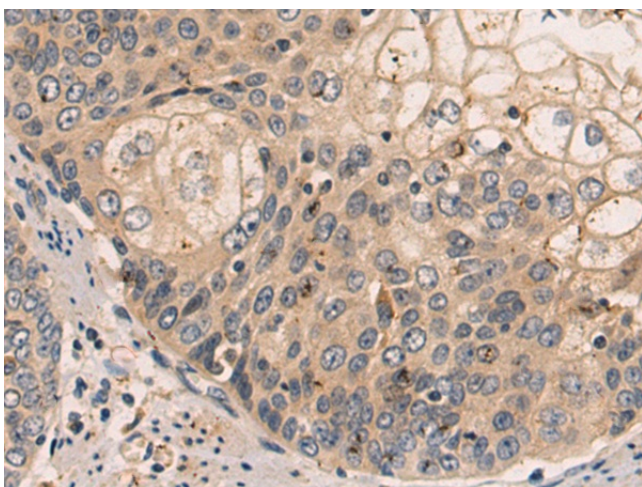
Synonyms: pT49; T49

Protein Families: Druggable Genome, Secreted Protein

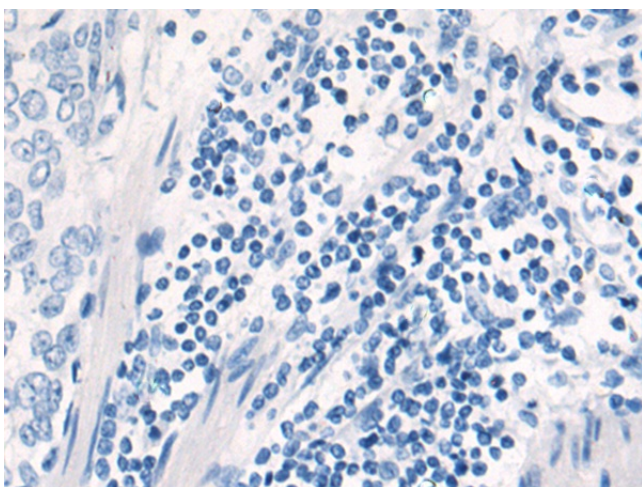
Product images:



Gel: 8%SDS-PAGE
Lysate: 40 μ g
Lane: A375 cell lysate
Primary antibody: TA349982 (FGL2 Antibody) at dilution 1/1000
Secondary antibody: Goat anti rabbit IgG at 1/5000 dilution
Exposure time: 10 seconds



Immunohistochemistry of paraffin-embedded Human esophagus cancer tissue using TA349982 (FGL2 Antibody) at dilution 1/70 (Original magnification: \times 200)



Immunohistochemistry of paraffin-embedded Human esophagus cancer tissue using TA349982 (FGL2 Antibody) at dilution 1/70, treated with fusion protein. (Original magnification: ×200)