

## Product datasheet for **TA349981S**

### FGFRL1 Rabbit Polyclonal Antibody

#### Product data:

Product Type:	Primary Antibodies
Applications:	IHC, WB
Recommended Dilution:	WB: 200-1000 WB positive control: NIH/3T3 cells and human placenta tissue, lovo cells IHC: 100-300 Positive control: Human colon cancer Predicted cell location: Cytoplasm and Nucleus
Reactivity:	Human, Mouse, Rat
Host:	Rabbit
Isotype:	IgG
Clonality:	Polyclonal
Immunogen:	Fusion protein of human FGFRL1
Formulation:	pH7.4 PBS, 0.05% NaN <sub>3</sub> , 40% Glycerol
Purification:	Antigen affinity purification
Conjugation:	Unconjugated
Storage:	Store at -20°C as received.
Stability:	Stable for 12 months from date of receipt.
Predicted Protein Size:	55 kDa
Gene Name:	fibroblast growth factor receptor-like 1
Database Link:	<a href="#">NP_068742</a> <a href="#">Entrez Gene 116701 MouseEntrez Gene 360903 RatEntrez Gene 53834 Human Q8N441</a>



[View online »](#)

**Background:**

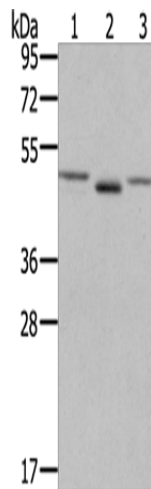
The protein encoded by this gene is a member of the fibroblast growth factor receptor (FGFR) family, where amino acid sequence is highly conserved between members and throughout evolution. FGFR family members differ from one another in their ligand affinities and tissue distribution. A full-length representative protein would consist of an extracellular region, composed of three immunoglobulin-like domains, a single hydrophobic membrane-spanning segment and a cytoplasmic tyrosine kinase domain. The extracellular portion of the protein interacts with fibroblast growth factors, setting in motion a cascade of downstream signals, ultimately influencing mitogenesis and differentiation. A marked difference between this gene product and the other family members is its lack of a cytoplasmic tyrosine kinase domain. The result is a transmembrane receptor that could interact with other family members and potentially inhibit signaling. Multiple alternatively spliced transcript variants encoding the same isoform have been found for this gene.

**Synonyms:**

FGFR5; FHFR

**Protein Families:**

Druggable Genome, Transmembrane

**Product images:**

Gel: 6%SDS-PAGE

Lysate: 40 µg

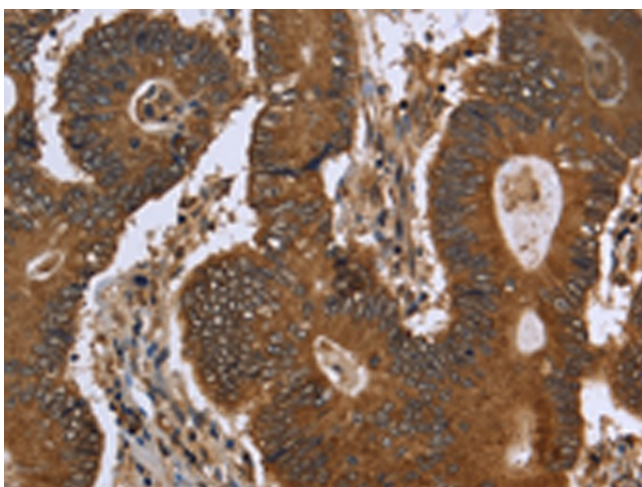
Lane 1-3: NIH/3T3 cells

human placenta tissue

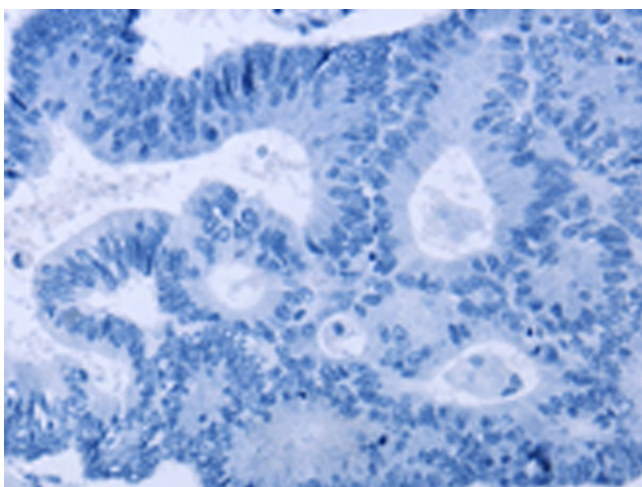
lovo cells

Primary antibody: [TA349981] (FGFRL1 Antibody)  
at dilution 1/400Secondary antibody: Goat anti rabbit IgG at  
1/8000 dilution

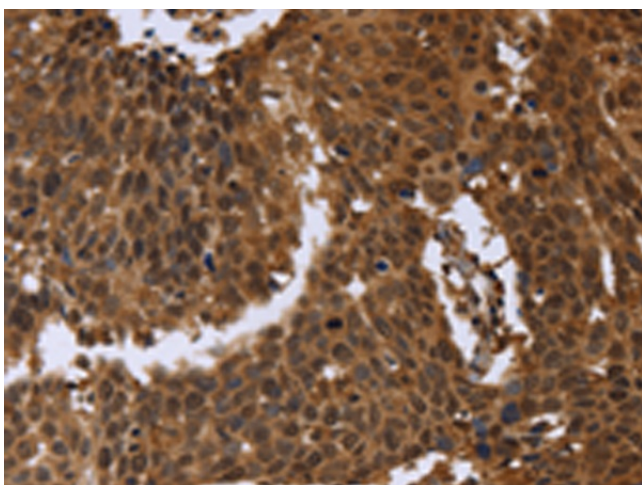
Exposure time: 1 minute



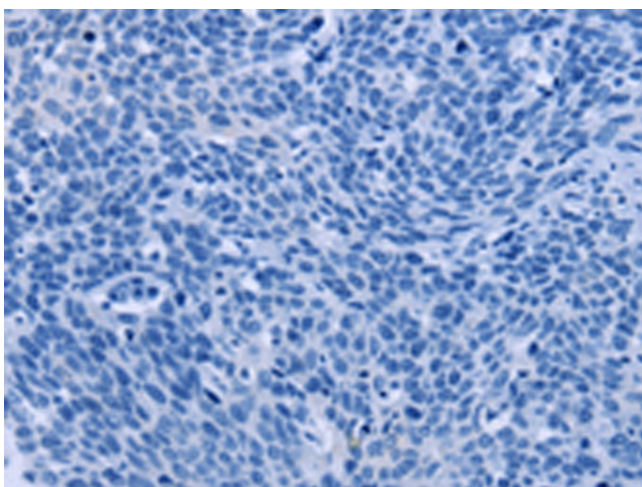
Immunohistochemistry of paraffin-embedded Human colon cancer tissue using [TA349981] (FGFRL1 Antibody) at dilution 1/40 (Original magnification:  $\times 200$ )



Immunohistochemistry of paraffin-embedded Human colon cancer tissue using [TA349981] (FGFRL1 Antibody) at dilution 1/40, treated with fusion protein. (Original magnification:  $\times 200$ )



Immunohistochemistry of paraffin-embedded Human cervical cancer tissue using [TA349981] (FGFRL1 Antibody) at dilution 1/40 (Original magnification:  $\times 200$ )



Immunohistochemistry of paraffin-embedded Human cervical cancer tissue using [TA349981] (FGFRL1 Antibody) at dilution 1/40, treated with fusion protein. (Original magnification: ×200)