

## Product datasheet for **TA349979**

### FGFR1 Oncogene Partner (FGFR1OP) Rabbit Polyclonal Antibody

#### Product data:

Product Type:	Primary Antibodies
Applications:	IHC, WB
Recommended Dilution:	WB: 500-2000 WB positive control: Mouse heart tissue and NIH/3T3 cells, mouse liver tissue IHC: 50-200 Positive control: Human brain Predicted cell location: Cytoplasm
Reactivity:	Human, Mouse
Host:	Rabbit
Isotype:	IgG
Clonality:	Polyclonal
Immunogen:	Fusion protein of human FGFR1OP
Formulation:	pH7.4 PBS, 0.05% NaN <sub>3</sub> , 40% Glycerol
Concentration:	lot specific
Purification:	Antigen affinity purification
Conjugation:	Unconjugated
Storage:	Store at -20°C as received.
Stability:	Stable for 12 months from date of receipt.
Predicted Protein Size:	43 kDa
Gene Name:	FGFR1 oncogene partner
Database Link:	<a href="#">NP_919410</a> <a href="#">Entrez Gene 75296 Mouse</a> <a href="#">Entrez Gene 11116 Human</a> <a href="#">O95684</a>



[View online »](#)

**Background:**

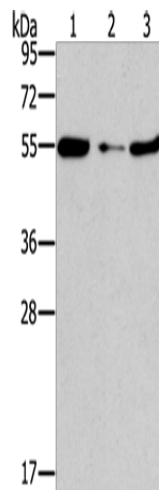
This gene encodes a largely hydrophilic centrosomal protein that is required for anchoring microtubules to subcellular structures. A t(6;8)(q27;p11) chromosomal translocation, fusing this gene and the fibroblast growth factor receptor 1 (FGFR1) gene, has been found in cases of myeloproliferative disorder. The resulting chimeric protein contains the N-terminal leucine-rich region of this encoded protein fused to the catalytic domain of FGFR1. Alterations in this gene may also be associated with Crohn's disease, Graves' disease, and vitiligo. Alternatively spliced transcript variants that encode different proteins have been identified.

**Synonyms:**

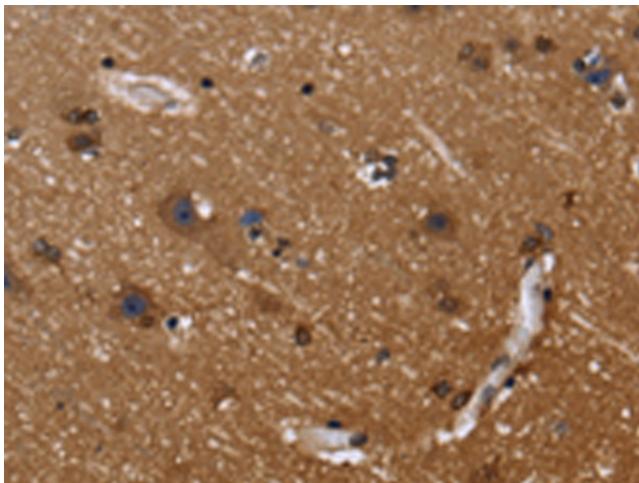
FOP

**Protein Families:**

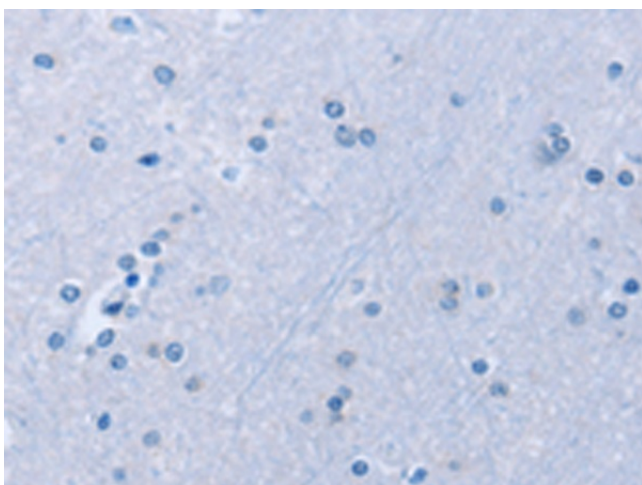
Druggable Genome

**Product images:**


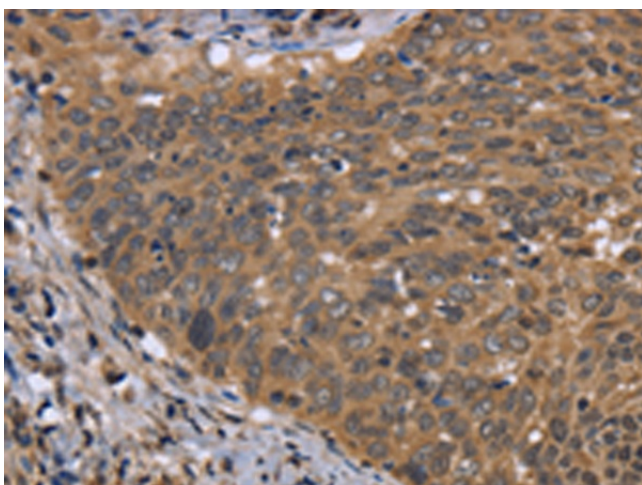
Gel: 8%SDS-PAGE  
 Lysate: 40 µg  
 Lane 1-3: Mouse heart tissue  
 NIH/3T3 cells  
 mouse liver tissue  
 Primary antibody: TA349979 (FGFR1OP Antibody)  
 at dilution 1/850  
 Secondary antibody: Goat anti rabbit IgG at  
 1/8000 dilution  
 Exposure time: 2 minutes



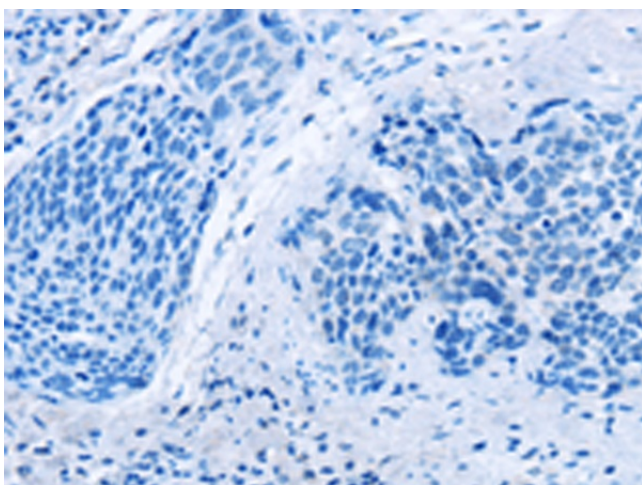
Immunohistochemistry of paraffin-embedded  
 Human brain tissue using TA349979 (FGFR1OP  
 Antibody) at dilution 1/40 (Original magnification:  
 ×200)



Immunohistochemistry of paraffin-embedded Human brain tissue using TA349979 (FGFR1OP Antibody) at dilution 1/40, treated with fusion protein. (Original magnification: ×200)



Immunohistochemistry of paraffin-embedded Human cervical cancer tissue using TA349979 (FGFR1OP Antibody) at dilution 1/40 (Original magnification: ×200)



Immunohistochemistry of paraffin-embedded Human cervical cancer tissue using TA349979 (FGFR1OP Antibody) at dilution 1/40, treated with fusion protein. (Original magnification: ×200)