

## Product datasheet for **TA349977S**

### FGF18 Rabbit Polyclonal Antibody

#### Product data:

Product Type:	Primary Antibodies
Applications:	IHC, WB
Recommended Dilution:	WB: 500-2000 WB positive control: SKOV3 cell lysate IHC: 50-200 Positive control: Human esophagus cancer Predicted cell location: Secreted
Reactivity:	Human, Mouse, Rat
Host:	Rabbit
Isotype:	IgG
Clonality:	Polyclonal
Immunogen:	Fusion protein of human FGF18
Formulation:	pH7.4 PBS, 0.05% NaN <sub>3</sub> , 40% Glycerol
Purification:	Antigen affinity purification
Conjugation:	Unconjugated
Storage:	Store at -20°C as received.
Stability:	Stable for 12 months from date of receipt.
Gene Name:	fibroblast growth factor 18
Database Link:	<a href="#">NP_003853</a> <a href="#">Entrez Gene 14172 Mouse</a> <a href="#">Entrez Gene 29369 Rat</a> <a href="#">Entrez Gene 8817 Human</a> <a href="#">O76093</a>



[View online »](#)

**Background:**

The protein encoded by this gene is a member of the fibroblast growth factor (FGF) family. FGF family members possess broad mitogenic and cell survival activities, and are involved in a variety of biological processes, including embryonic development, cell growth, morphogenesis, tissue repair, tumor growth, and invasion. It has been shown in vitro that this protein is able to induce neurite outgrowth in PC12 cells. Studies of the similar proteins in mouse and chick suggested that this protein is a pleiotropic growth factor that stimulates proliferation in a number of tissues, most notably the liver and small intestine. Knockout studies of the similar gene in mice implied the role of this protein in regulating proliferation and differentiation of midline cerebellar structures.

**Synonyms:**

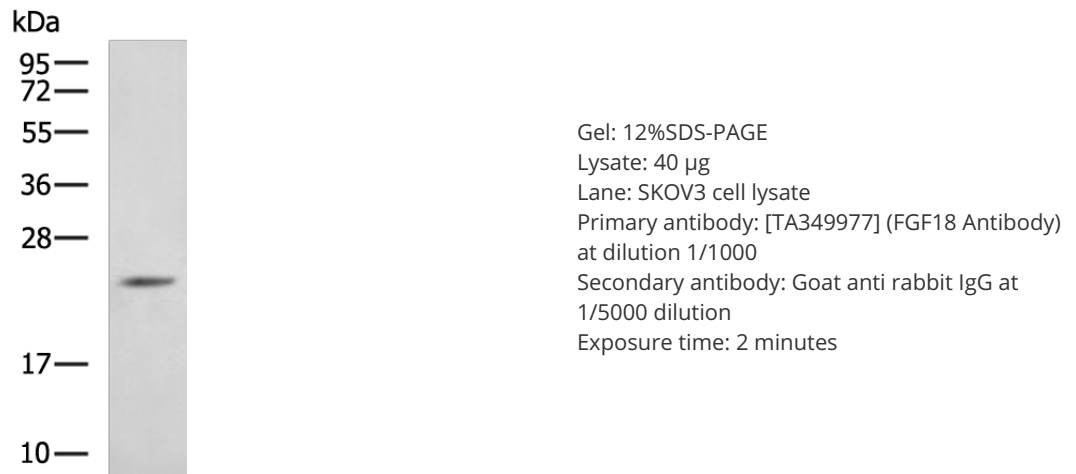
FGF-18; ZFGF5

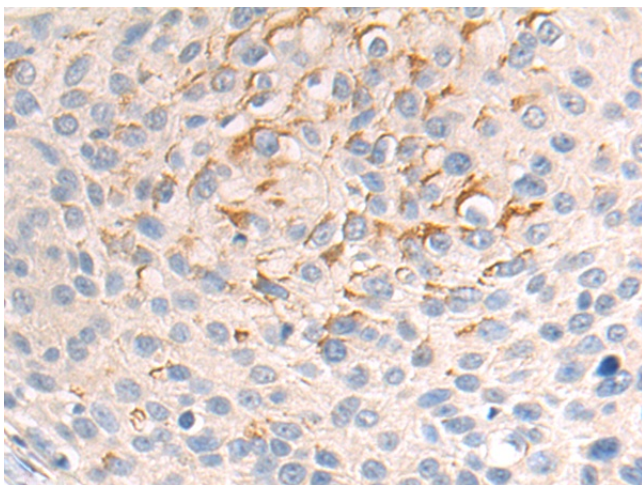
**Protein Families:**

ES Cell Differentiation/IPS, Secreted Protein

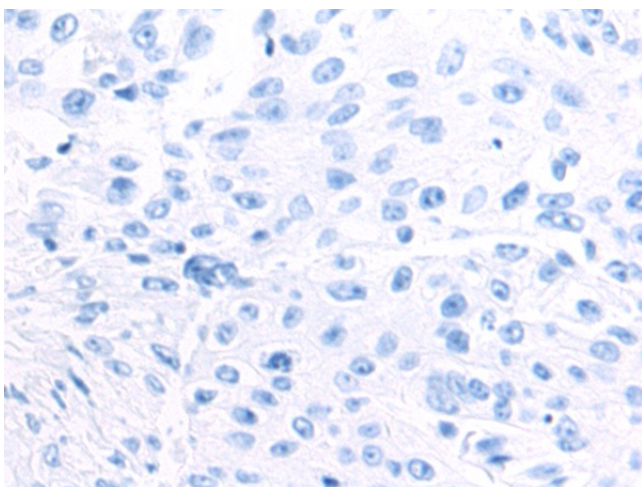
**Protein Pathways:**

MAPK signaling pathway, Melanoma, Pathways in cancer, Regulation of actin cytoskeleton

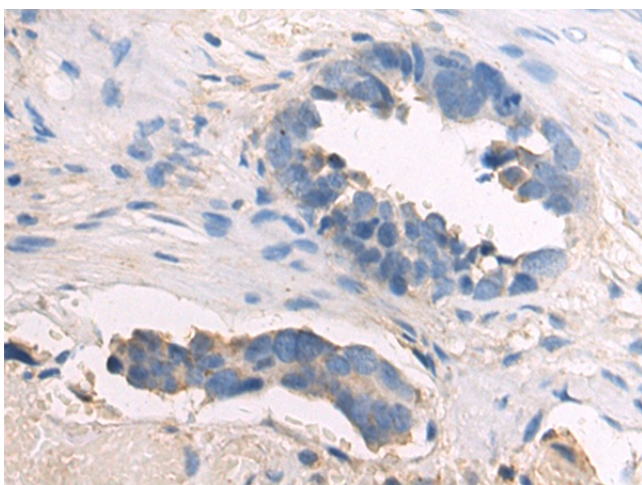
**Product images:**



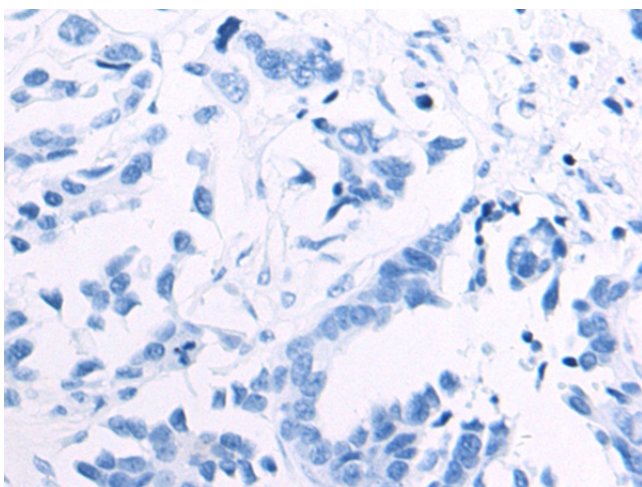
Immunohistochemistry of paraffin-embedded Human esophagus cancer tissue using [TA349977] (FGF18 Antibody) at dilution 1/70 (Original magnification:  $\times 200$ )



Immunohistochemistry of paraffin-embedded Human esophagus cancer tissue using [TA349977] (FGF18 Antibody) at dilution 1/70, treated with fusion protein. (Original magnification:  $\times 200$ )



Immunohistochemistry of paraffin-embedded Human colorectal cancer tissue using [TA349977] (FGF18 Antibody) at dilution 1/70 (Original magnification:  $\times 200$ )



Immunohistochemistry of paraffin-embedded Human colorectal cancer tissue using [TA349977] (FGF18 Antibody) at dilution 1/70, treated with fusion protein. (Original magnification: ×200)