

## Product datasheet for **TA349976**

### FGF17 Rabbit Polyclonal Antibody

#### Product data:

Product Type:	Primary Antibodies
Applications:	WB
Recommended Dilution:	WB: 500-2000 WB positive control: HepG2 cells
Reactivity:	Human, Mouse, Rat
Host:	Rabbit
Isotype:	IgG
Clonality:	Polyclonal
Immunogen:	Fusion protein of human FGF17
Formulation:	pH7.4 PBS, 0.05% NaN <sub>3</sub> , 40% Glycerol
Concentration:	lot specific
Purification:	Antigen affinity purification
Conjugation:	Unconjugated
Storage:	Store at -20°C as received.
Stability:	Stable for 12 months from date of receipt.
Predicted Protein Size:	25 kDa
Gene Name:	fibroblast growth factor 17
Database Link:	<a href="#">NP_003858</a> <a href="#">Entrez Gene 14171 Mouse</a> <a href="#">Entrez Gene 29368 Rat</a> <a href="#">Entrez Gene 8822 Human</a> <a href="#">O60258</a>



[View online »](#)

**Background:**

The protein encoded by this gene is a member of the fibroblast growth factor (FGF) family. FGF family members possess broad mitogenic and cell survival activities, and are involved in a variety of biological processes including embryonic development cell growth, morphogenesis, tissue repair, tumor growth and invasion. This gene was shown to be prominently expressed in the cerebellum and cortex. The mouse homolog of this gene was localized to specific sites in the midline structures of the forebrain, the midbrain-hindbrain junction, developing skeleton and developing arteries, which suggests a role in central nervous system, bone and vascular development. This gene was referred to as FGF-13 in reference 2, however, its amino acid sequence and chromosomal localization are identical to FGF17.

**Synonyms:**

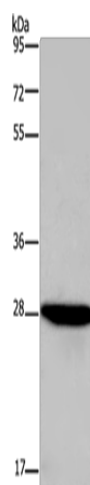
FGF-13; FGF-17; HH20

**Protein Families:**

Secreted Protein

**Protein Pathways:**

MAPK signaling pathway, Melanoma, Pathways in cancer, Regulation of actin cytoskeleton

**Product images:**

Gel: 8%SDS-PAGE  
Lysate: 40 µg  
Lane: HepG2 cells  
Primary antibody: TA349976 (FGF17 Antibody) at dilution 1/600  
Secondary antibody: Goat anti rabbit IgG at 1/8000 dilution  
Exposure time: 5 seconds