

## Product datasheet for **TA349974S**

### FES Rabbit Polyclonal Antibody

#### Product data:

Product Type:	Primary Antibodies
Applications:	IHC
Recommended Dilution:	IHC: 25-100 Positive control: Human liver cancer Predicted cell location: Cytoplasm or Nucleus
Reactivity:	Human, Mouse
Host:	Rabbit
Isotype:	IgG
Clonality:	Polyclonal
Immunogen:	Fusion protein of human FES
Formulation:	pH7.4 PBS, 0.05% NaN <sub>3</sub> , 40% Glycerol
Purification:	Antigen affinity purification
Conjugation:	Unconjugated
Storage:	Store at -20°C as received.
Stability:	Stable for 12 months from date of receipt.
Gene Name:	FES proto-oncogene, tyrosine kinase
Database Link:	<a href="#">NP_001996</a> <a href="#">Entrez Gene 14159 Mouse</a> <a href="#">Entrez Gene 2242 Human</a> <a href="#">P07332</a>

**Background:** This gene encodes the human cellular counterpart of a feline sarcoma retrovirus protein with transforming capabilities. The gene product has tyrosine-specific protein kinase activity and that activity is required for maintenance of cellular transformation. Its chromosomal location has linked it to a specific translocation event identified in patients with acute promyelocytic leukemia but it is also involved in normal hematopoiesis as well as growth factor and cytokine receptor signaling. Alternative splicing results in multiple variants encoding different isoforms.

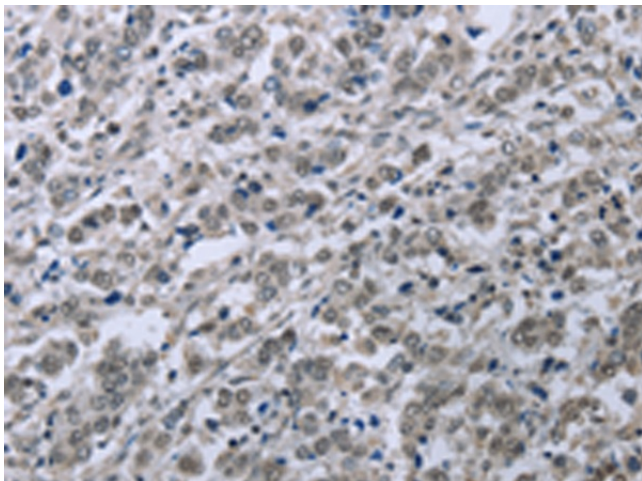
Synonyms:	FPS
Protein Families:	Druggable Genome, Protein Kinase



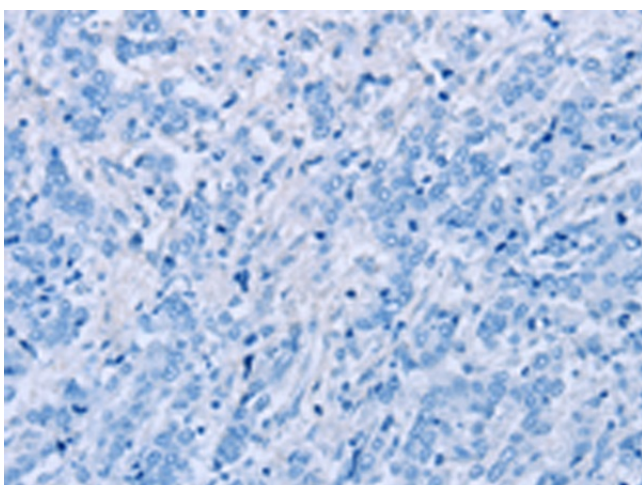
[View online »](#)

Protein Pathways: Axon guidance

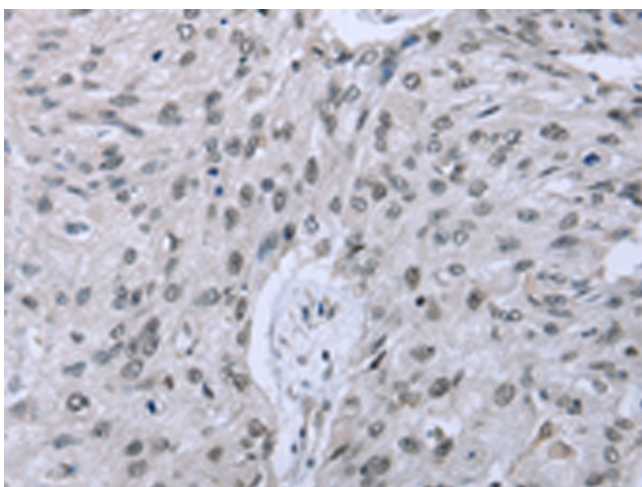
### Product images:



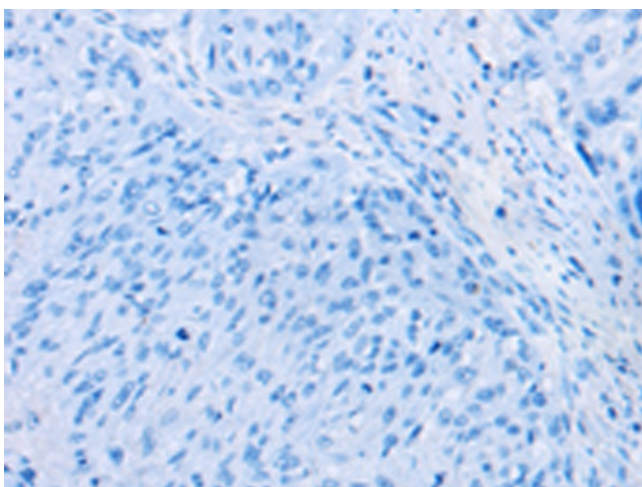
Immunohistochemistry of paraffin-embedded Human liver cancer tissue using [TA349974] (FES Antibody) at dilution 1/35 (Original magnification: ×200)



Immunohistochemistry of paraffin-embedded Human liver cancer tissue using [TA349974] (FES Antibody) at dilution 1/35, treated with fusion protein. (Original magnification: ×200)



Immunohistochemistry of paraffin-embedded Human esophagus cancer tissue using [TA349974] (FES Antibody) at dilution 1/35 (Original magnification:  $\times 200$ )



Immunohistochemistry of paraffin-embedded Human esophagus cancer tissue using [TA349974] (FES Antibody) at dilution 1/35, treated with fusion protein. (Original magnification:  $\times 200$ )