

## Product datasheet for **TA349973**

### CD89 (FCAR) Rabbit Polyclonal Antibody

#### Product data:

Product Type:	Primary Antibodies
Applications:	IHC, WB
Recommended Dilution:	ELISA: 1000-2000, WB: 200-1000, IHC: 25-100
Reactivity:	Human, Mouse
Host:	Rabbit
Isotype:	IgG
Clonality:	Polyclonal
Immunogen:	Fusion protein of human FCAR
Formulation:	pH7.4 PBS, 0.05% NaN <sub>3</sub> , 40% Glycerol
Concentration:	lot specific
Purification:	Antigen affinity purification
Conjugation:	Unconjugated
Storage:	Store at -20°C as received.
Stability:	Stable for 12 months from date of receipt.
Predicted Protein Size:	32 kDa
Gene Name:	Fc fragment of IgA receptor
Database Link:	<a href="#">NP_579803</a> <a href="#">Entrez Gene 2204 Human P24071</a>

**Background:** This gene is a member of the immunoglobulin gene superfamily and encodes a receptor for the Fc region of IgA. The receptor is a transmembrane glycoprotein present on the surface of myeloid lineage cells such as neutrophils, monocytes, macrophages, and eosinophils, where it mediates immunologic responses to pathogens. It interacts with IgA-opsonized targets and triggers several immunologic defense processes, including phagocytosis, antibody-dependent cell-mediated cytotoxicity, and stimulation of the release of inflammatory mediators. Multiple alternatively spliced transcript variants encoding different isoforms have been described for this gene.

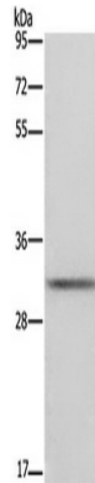
**Synonyms:** CD89; CTB-61M7.2; FcαRI



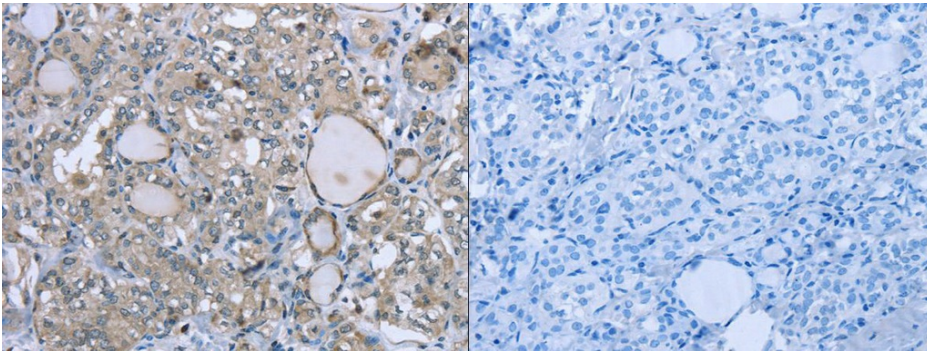
[View online »](#)

Protein Families: Transmembrane

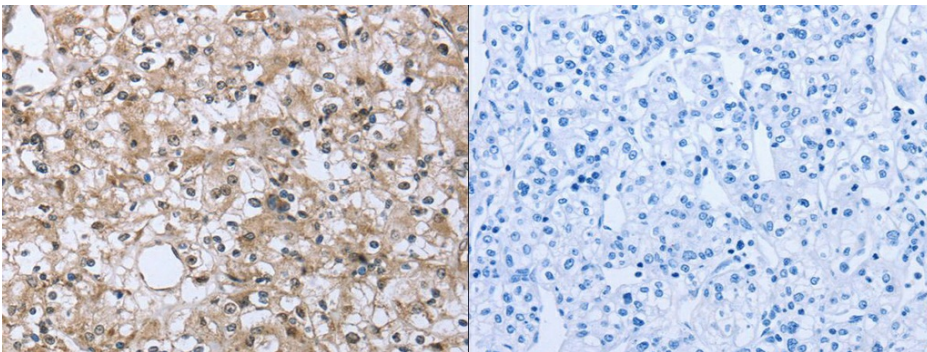
## Product images:



Gel: 8%SDS-PAGE, Lysate: 40 ug, Lane: Mouse brain tissue, Primary antibody: (FCAR Antibody) at dilution 1/700, Secondary antibody: Goat anti rabbit IgG at 1/8000 dilution, Exposure time: 10 seconds



The image on the left is immunohistochemistry of paraffin-embedded Human thyroid cancer tissue using (FCAR Antibody) at dilution 1/20, on the right is treated with fusion protein. (Original magnification:  $\times 200$ )



The image on the left is immunohistochemistry of paraffin-embedded Human prostate cancer tissue using (FCAR Antibody) at dilution 1/20, on the right is treated with fusion protein. (Original magnification:  $\times 200$ )