

## Product datasheet for **TA349972**

### CD32B (FCGR2B) Rabbit Polyclonal Antibody

#### Product data:

Product Type:	Primary Antibodies
Applications:	IHC, WB
Recommended Dilution:	WB: 500-2000 WB positive control: Human placenta tissue IHC: 50-200 Positive control: Human liver cancer Predicted cell location: Cytoplasm
Reactivity:	Human
Host:	Rabbit
Isotype:	IgG
Clonality:	Polyclonal
Immunogen:	Fusion protein of human FCGR2B
Formulation:	pH7.4 PBS, 0.05% NaN <sub>3</sub> , 40% Glycerol
Concentration:	lot specific
Purification:	Antigen affinity purification
Conjugation:	Unconjugated
Storage:	Store at -20°C as received.
Stability:	Stable for 12 months from date of receipt.
Predicted Protein Size:	34 kDa
Gene Name:	Fc fragment of IgG receptor IIb
Database Link:	<a href="#">NP_001002275</a> <a href="#">Entrez Gene 2213 Human</a> <a href="#">P31994</a>

**Background:** The protein encoded by this gene is a low affinity receptor for the Fc region of immunoglobulin gamma complexes. The encoded protein is involved in the phagocytosis of immune complexes and in the regulation of antibody production by B-cells. Variations in this gene may increase susceptibility to systemic lupus erythematosus (SLE). Several transcript variants encoding different isoforms have been found for this gene.



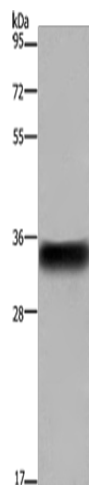
[View online »](#)

**Synonyms:** CD32; CD32B; FCG2; FCGR2; IGFR2

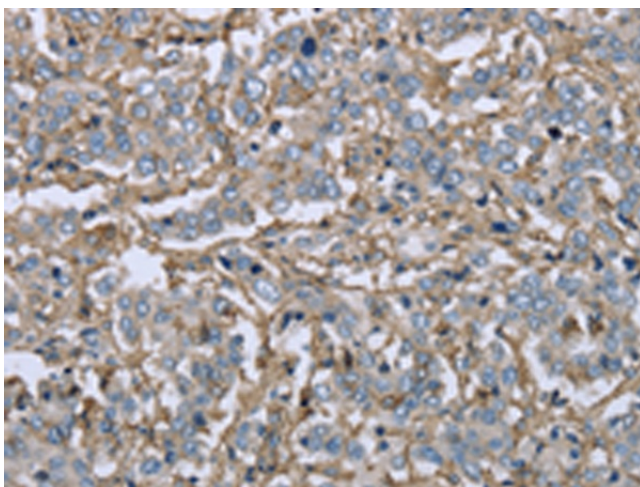
**Protein Families:** ES Cell Differentiation/IPS, Transmembrane

**Protein Pathways:** B cell receptor signaling pathway, Fc gamma R-mediated phagocytosis, Systemic lupus erythematosus

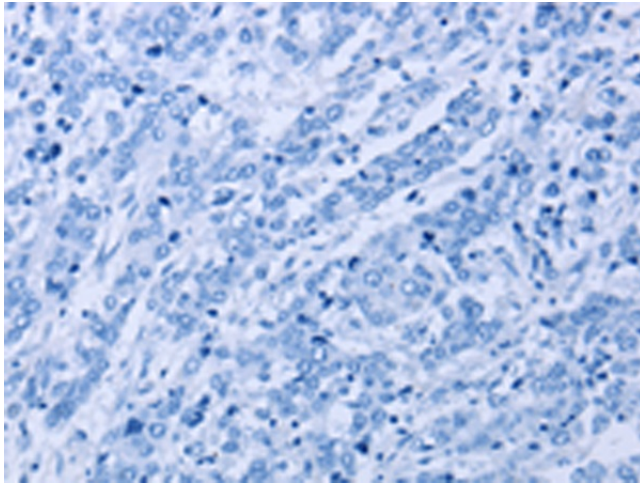
### Product images:



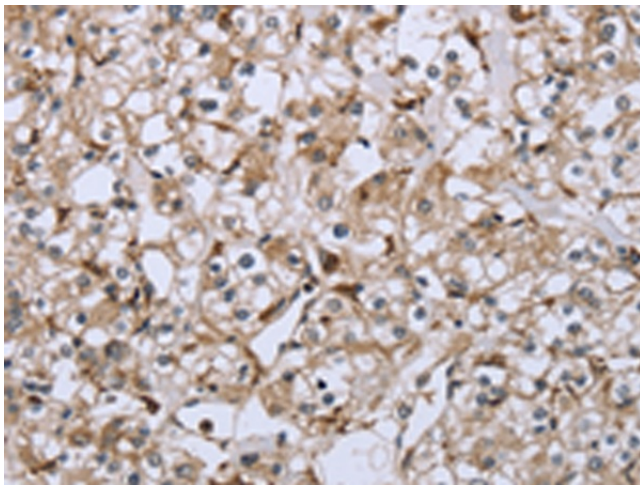
Gel: 8%SDS-PAGE  
Lysate: 40 µg  
Lane: Human placenta tissue  
Primary antibody: TA349972 (FCGR2B Antibody) at dilution 1/850  
Secondary antibody: Goat anti rabbit IgG at 1/8000 dilution  
Exposure time: 5 seconds



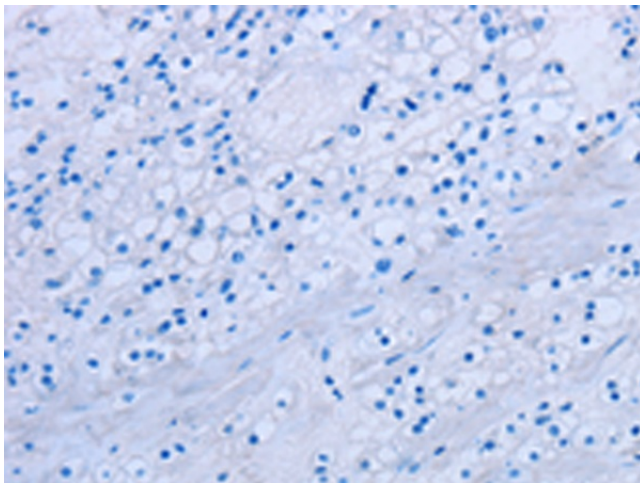
Immunohistochemistry of paraffin-embedded Human liver cancer tissue using TA349972 (FCGR2B Antibody) at dilution 1/40 (Original magnification: ×200)



Immunohistochemistry of paraffin-embedded Human liver cancer tissue using TA349972 (FCGR2B Antibody) at dilution 1/40, treated with fusion protein. (Original magnification: ×200)



Immunohistochemistry of paraffin-embedded Human prostate cancer tissue using TA349972 (FCGR2B Antibody) at dilution 1/40 (Original magnification: ×200)



Immunohistochemistry of paraffin-embedded Human prostate cancer tissue using TA349972 (FCGR2B Antibody) at dilution 1/40, treated with fusion protein. (Original magnification: ×200)