

Product datasheet for **TA349970**

FBP1 Rabbit Polyclonal Antibody

Product data:

Product Type:	Primary Antibodies
Applications:	IHC, WB
Recommended Dilution:	WB: 1000-5000 WB positive control: Mouse stomach and human fetal liver tissue, MCF-7 cells and mouse liver tissue IHC: 50-200 Positive control: Human prostate cancer Predicted cell location: Cytoplasm
Reactivity:	Human, Mouse
Host:	Rabbit
Isotype:	IgG
Clonality:	Polyclonal
Immunogen:	Fusion protein of human FBP1
Formulation:	pH7.4 PBS, 0.05% NaN ₃ , 40% Glycerol
Concentration:	lot specific
Purification:	Antigen affinity purification
Conjugation:	Unconjugated
Storage:	Store at -20°C as received.
Stability:	Stable for 12 months from date of receipt.
Predicted Protein Size:	37 kDa
Gene Name:	fructose-bisphosphatase 1
Database Link:	NP_000498 Entrez Gene 14121 Mouse Entrez Gene 2203 Human P09467
Background:	Fructose-1,6-bisphosphatase 1, a gluconeogenesis regulatory enzyme, catalyzes the hydrolysis of fructose 1,6-bisphosphate to fructose 6-phosphate and inorganic phosphate. Fructose-1,6-diphosphatase deficiency is associated with hypoglycemia and metabolic acidosis.



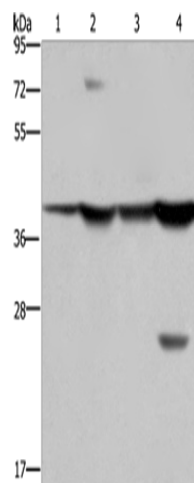
[View online »](#)

Synonyms: FBP

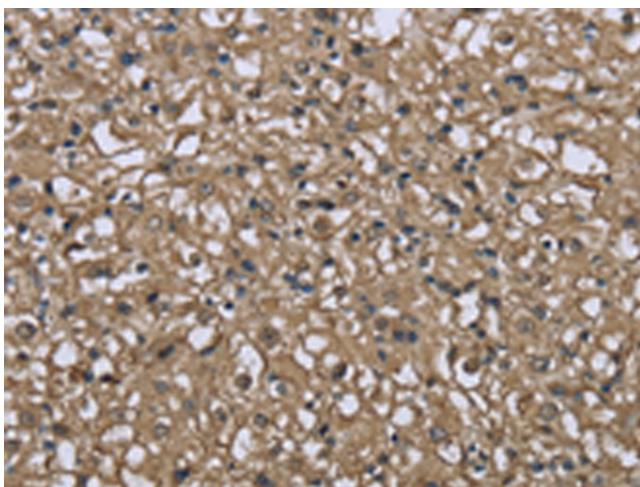
Protein Families: Druggable Genome, Stem cell - Pluripotency

Protein Pathways: Fructose and mannose metabolism, Glycolysis / Gluconeogenesis, Insulin signaling pathway, Metabolic pathways, Pentose phosphate pathway

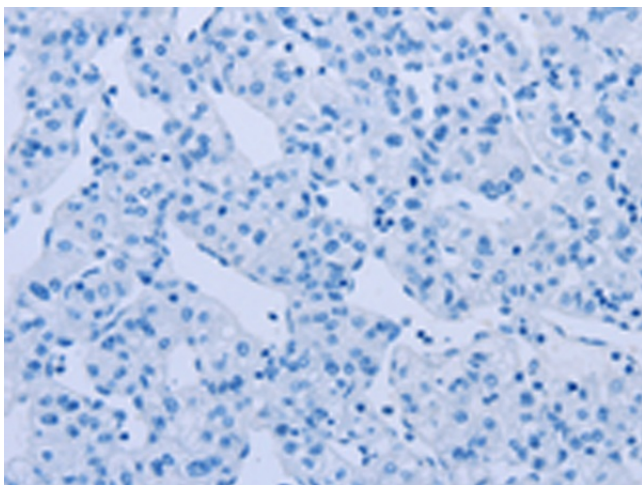
Product images:



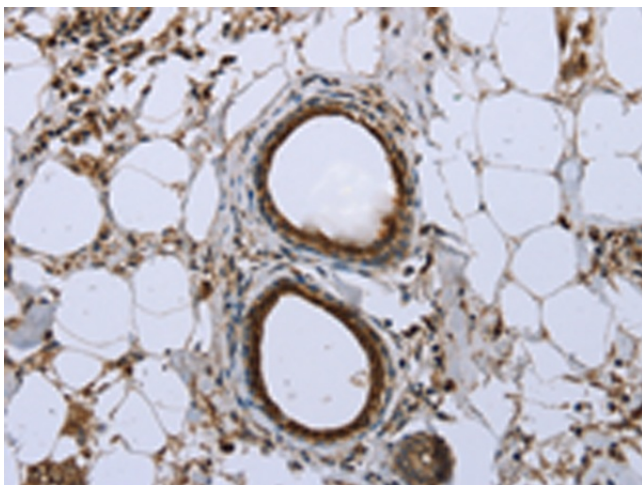
Gel: 8%SDS-PAGE
Lysate: 40 µg
Lane 1-4: Mouse stomach tissue
human fetal liver tissue
MCF7 cells
mouse liver tissue tissue
Primary antibody: TA349970 (FBP1 Antibody) at dilution 1/850
Secondary antibody: Goat anti rabbit IgG at 1/8000 dilution
Exposure time: 10 seconds



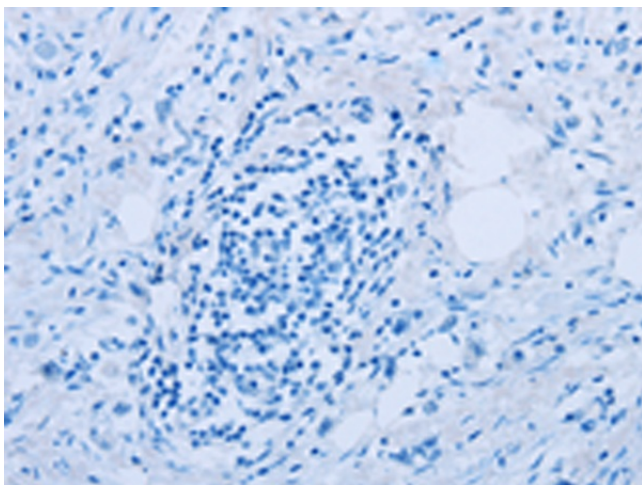
Immunohistochemistry of paraffin-embedded Human prostate cancer tissue using TA349970 (FBP1 Antibody) at dilution 1/40 (Original magnification: ×200)



Immunohistochemistry of paraffin-embedded Human prostate cancer tissue using TA349970 (FBP1 Antibody) at dilution 1/40, treated with fusion protein. (Original magnification: $\times 200$)



Immunohistochemistry of paraffin-embedded Human breast cancer tissue using TA349970 (FBP1 Antibody) at dilution 1/40 (Original magnification: $\times 200$)



Immunohistochemistry of paraffin-embedded Human breast cancer tissue using TA349970 (FBP1 Antibody) at dilution 1/40, treated with fusion protein. (Original magnification: $\times 200$)