

Product datasheet for **TA349968**

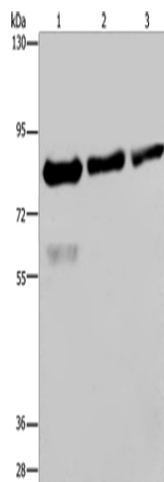
FASTKD2 Rabbit Polyclonal Antibody

Product data:

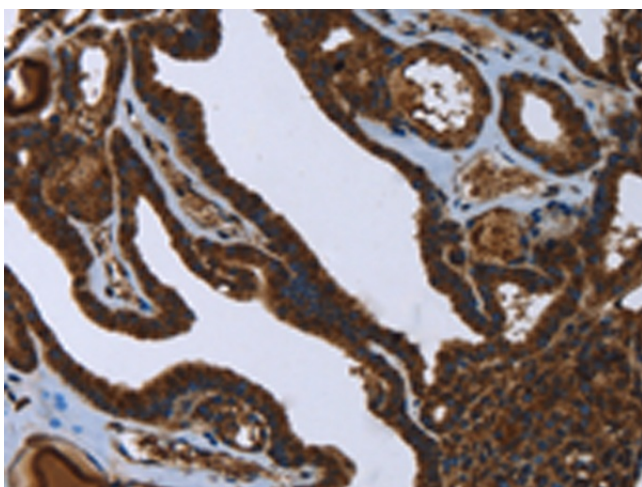
Product Type:	Primary Antibodies
Applications:	IHC, WB
Recommended Dilution:	WB: 500-2000 WB positive control: Hela, LoVo and HepG2 cells IHC: 50-200 Positive control: Human thyroid cancer Predicted cell location: Nucleus or Cytoplasm
Reactivity:	Human
Host:	Rabbit
Isotype:	IgG
Clonality:	Polyclonal
Immunogen:	Fusion protein of human FASTKD2
Formulation:	pH7.4 PBS, 0.05% NaN ₃ , 40% Glycerol
Concentration:	lot specific
Purification:	Antigen affinity purification
Conjugation:	Unconjugated
Storage:	Store at -20°C as received.
Stability:	Stable for 12 months from date of receipt.
Predicted Protein Size:	81 kDa
Gene Name:	FAST kinase domains 2
Database Link:	NP_055744 Entrez Gene 22868 Human Q9NYY8
Background:	This gene encodes a protein that is localized in the mitochondrial inner compartment and that may play a role in mitochondrial apoptosis. Nonsense mutations have been reported to result in cytochrome c oxidase deficiency.
Synonyms:	KIAA0971



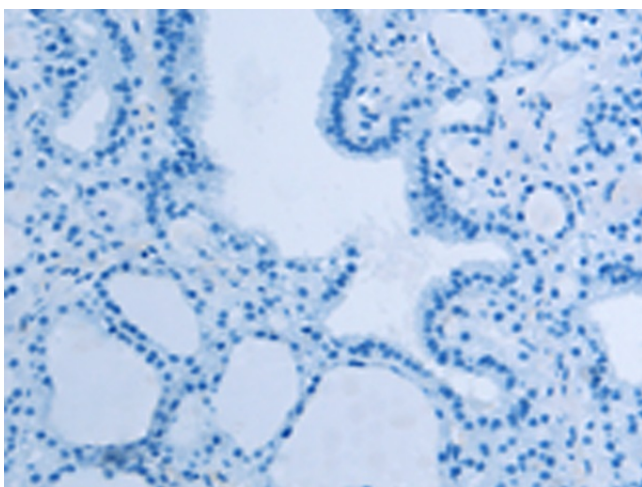
[View online »](#)

Product images:


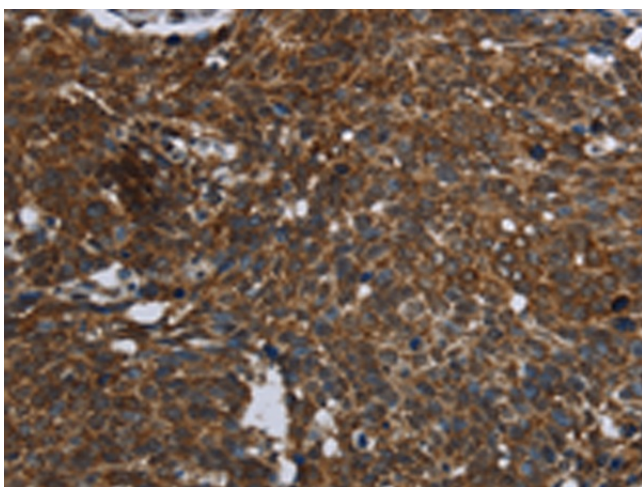
Gel: 6%SDS-PAGE
 Lysate: 40 µg
 Lane 1-3: HeLa cells
 LoVo cells
 HepG2 cells
 Primary antibody: TA349968 (FASTKD2 Antibody)
 at dilution 1/500
 Secondary antibody: Goat anti rabbit IgG at
 1/8000 dilution
 Exposure time: 40 seconds



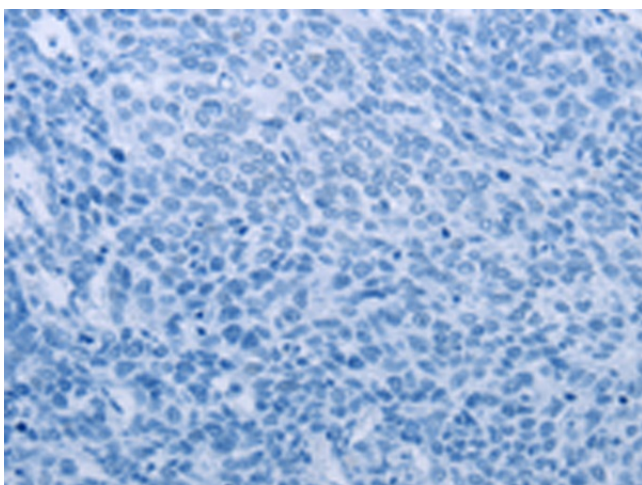
Immunohistochemistry of paraffin-embedded
 Human thyroid cancer tissue using TA349968
 (FASTKD2 Antibody) at dilution 1/45 (Original
 magnification: ×200)



Immunohistochemistry of paraffin-embedded Human thyroid cancer tissue using TA349968 (FASTKD2 Antibody) at dilution 1/45, treated with fusion protein. (Original magnification: ×200)



Immunohistochemistry of paraffin-embedded Human cervical cancer tissue using TA349968 (FASTKD2 Antibody) at dilution 1/45 (Original magnification: ×200)



Immunohistochemistry of paraffin-embedded Human cervical cancer tissue using TA349968 (FASTKD2 Antibody) at dilution 1/45, treated with fusion protein. (Original magnification: ×200)