

## Product datasheet for **TA349959S**

### FAM3B Rabbit Polyclonal Antibody

#### Product data:

Product Type:	Primary Antibodies
Applications:	IHC
Recommended Dilution:	IHC: 50-200 Positive control: Human liver cancer Predicted cell location: Cytoplasm
Reactivity:	Human, Mouse
Host:	Rabbit
Isotype:	IgG
Clonality:	Polyclonal
Immunogen:	Fusion protein of human FAM3B
Formulation:	pH7.4 PBS, 0.05% NaN <sub>3</sub> , 40% Glycerol
Purification:	Antigen affinity purification
Conjugation:	Unconjugated
Storage:	Store at -20°C as received.
Stability:	Stable for 12 months from date of receipt.
Gene Name:	family with sequence similarity 3 member B
Database Link:	<a href="#">NP_478066</a> <a href="#">Entrez Gene 52793 Mouse</a> <a href="#">Entrez Gene 54097 Human</a> <a href="#">P58499</a>

**Background:** FAM3B (family with sequence similarity 3, member B), also known as ORF9, C21orf11 or PANDER, is a 235 amino acid secreted protein that localizes to discrete vesicular and perinuclear structures. Expressed at high levels in pancreas and at lower levels in kidney, colon, testis, prostate and small intestine, FAM3B functions as an islet-specific cytokine that promotes apoptosis and may inhibit Insulin secretion from beta-cells, possibly playing a role in overall pancreatic activity. Human FAM3B shares 78% sequence identity with its mouse counterpart, suggesting a conserved role between species. Three isoforms of FAM3B, designated A, B and C, exist due to alternative splicing events. The gene encoding FAM3B maps to human chromosome 21, which houses approximately 300 genes and comprises nearly 1.5% of the human genome.

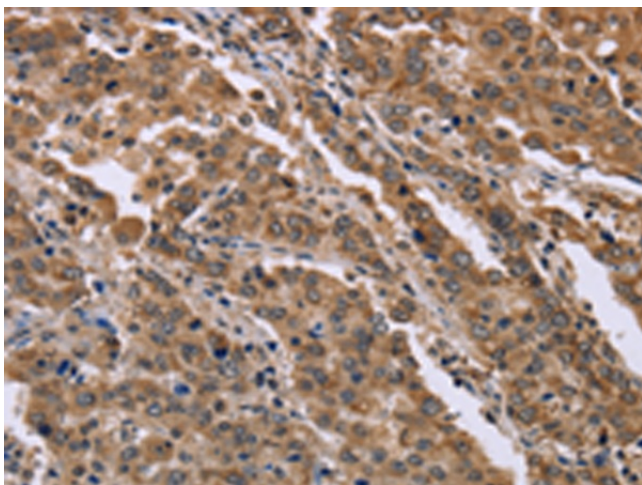


[View online »](#)

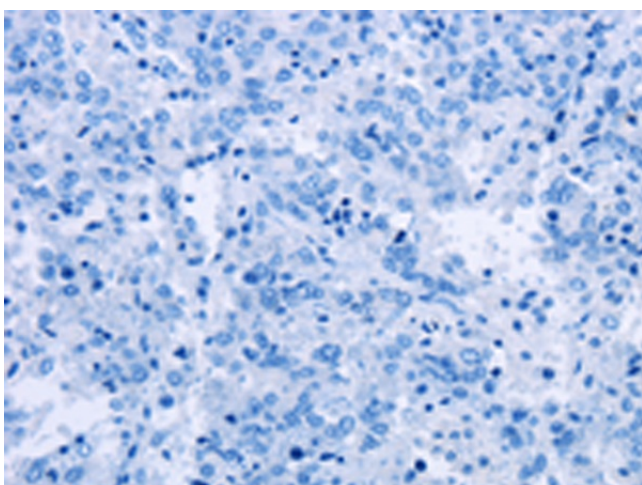
**Synonyms:** 2-21; C21orf11; C21orf76; ORF9; PANDER; PRED44

**Protein Families:** Druggable Genome, Secreted Protein, Transmembrane

**Product images:**



Immunohistochemistry of paraffin-embedded Human liver cancer tissue using [TA349959] (FAM3B Antibody) at dilution 1/40 (Original magnification:  $\times 200$ )



Immunohistochemistry of paraffin-embedded Human liver cancer tissue using [TA349959] (FAM3B Antibody) at dilution 1/40, treated with fusion protein. (Original magnification:  $\times 200$ )