

## Product datasheet for **TA349956S**

### FAIM2 Rabbit Polyclonal Antibody

#### Product data:

Product Type:	Primary Antibodies
Applications:	IHC, WB
Recommended Dilution:	WB: 500-2000 WB positive control: A172 and Raji cells IHC: 50-200 Positive control: Human ovarian cancer Predicted cell location: Cytoplasm
Reactivity:	Human, Mouse, Rat
Host:	Rabbit
Isotype:	IgG
Clonality:	Polyclonal
Immunogen:	Fusion protein of human FAIM2
Formulation:	pH7.4 PBS, 0.05% NaN <sub>3</sub> , 40% Glycerol
Purification:	Antigen affinity purification
Conjugation:	Unconjugated
Storage:	Store at -20°C as received.
Stability:	Stable for 12 months from date of receipt.
Predicted Protein Size:	35 kDa
Gene Name:	Fas apoptotic inhibitory molecule 2
Database Link:	<a href="#">NP_036438</a> <a href="#">Entrez Gene 72393 Mouse</a> <a href="#">Entrez Gene 246274 Rat</a> <a href="#">Entrez Gene 23017 Human</a> <a href="#">Q9BWQ8</a>

**Background:** FAIM2 (Fas apoptotic inhibitory molecule 2), also known as LFG (Protein lifeguard), TMBIM2 (Transmembrane BAX inhibitor motif-containing protein 2) and NMP35 (neural membrane protein 35), is a 316 amino acid multipass membrane protein that uniquely protects cells from Fas-induced apoptosis. Though widely expressed, FAIM2 expression is highest in hippocampus. FAIM2 contains seven transmembrane domains and resembles Bax Inhibitor-1, another anti-apoptotic protein.

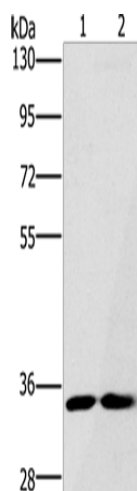


[View online »](#)

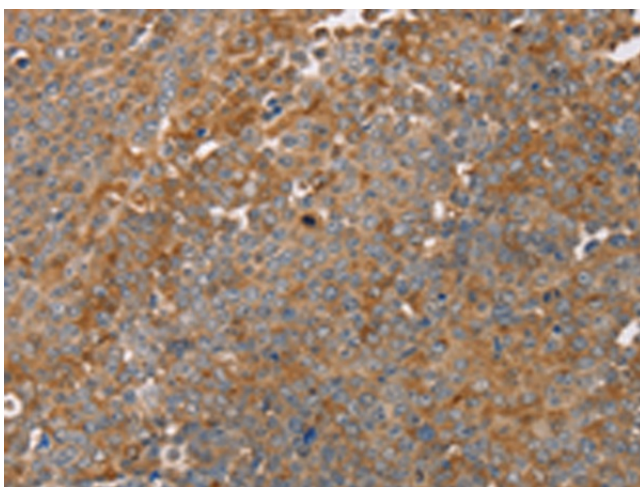
Synonyms: LFG; LFG2; NGP35; NMP35; TMBIM2

Protein Families: Transmembrane

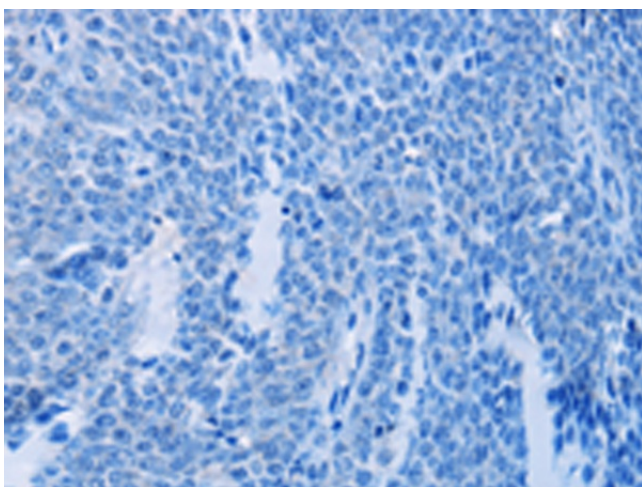
### Product images:



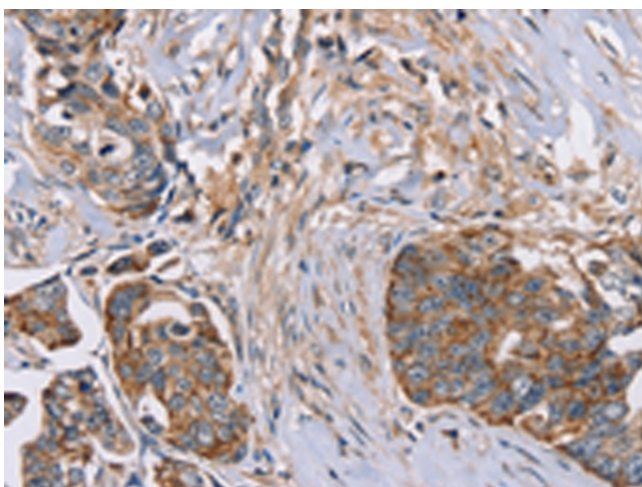
Gel: 8%SDS-PAGE  
Lysate: 40 µg  
Lane 1-2: A172 cells  
Raji cells  
Primary antibody: [TA349956] (FAIM2 Antibody)  
at dilution 1/500  
Secondary antibody: Goat anti rabbit IgG at  
1/8000 dilution  
Exposure time: 30 seconds



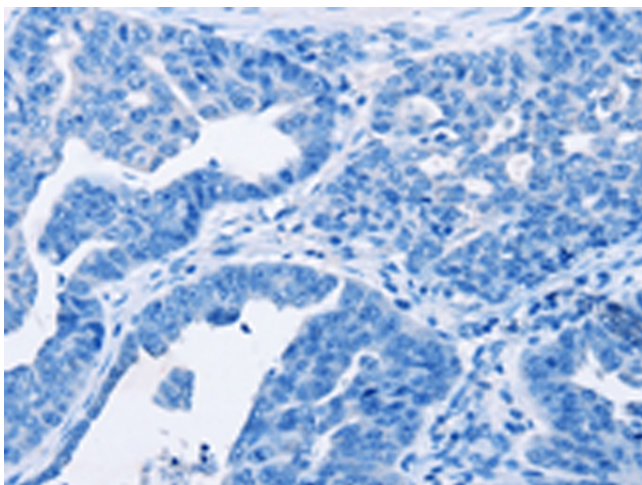
Immunohistochemistry of paraffin-embedded  
Human ovarian cancer tissue using [TA349956]  
(FAIM2 Antibody) at dilution 1/30 (Original  
magnification: ×200)



Immunohistochemistry of paraffin-embedded Human ovarian cancer tissue using [TA349956] (FAIM2 Antibody) at dilution 1/30, treated with fusion protein. (Original magnification:  $\times 200$ )



Immunohistochemistry of paraffin-embedded Human cervical cancer tissue using [TA349956] (FAIM2 Antibody) at dilution 1/30 (Original magnification:  $\times 200$ )



Immunohistochemistry of paraffin-embedded Human cervical cancer tissue using [TA349956] (FAIM2 Antibody) at dilution 1/30, treated with fusion protein. (Original magnification:  $\times 200$ )