

Product datasheet for **TA349955**

FAIM3 (FCMR) Rabbit Polyclonal Antibody

Product data:

Product Type:	Primary Antibodies
Applications:	IHC, WB
Recommended Dilution:	WB: 200-1000 WB positive control: Human lymphoma tissue IHC: 20-100 Positive control: Human breast cancer Predicted cell location: Cytoplasm
Reactivity:	Human
Host:	Rabbit
Isotype:	IgG
Clonality:	Polyclonal
Immunogen:	Fusion protein of human FAIM3
Formulation:	pH7.4 PBS, 0.05% NaN ₃ , 40% Glycerol
Concentration:	lot specific
Purification:	Antigen affinity purification
Conjugation:	Unconjugated
Storage:	Store at -20°C as received.
Stability:	Stable for 12 months from date of receipt.
Predicted Protein Size:	43 kDa
Gene Name:	Fc fragment of IgM receptor
Database Link:	NP_005440 Entrez Gene 9214 Human O60667



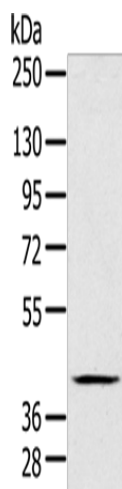
[View online »](#)

Background: Fc receptors specifically bind to the Fc region of immunoglobulins (Igs) to mediate the unique functions of each Ig class. FAIM3 encodes an Fc receptor for IgM. May play a role in the immune system processes. Protects cells from FAS-, TNF alpha- and FADD-induced apoptosis without increasing expression of the inhibitors of apoptosis BCL2 and BCLXL. Seems to activate an inhibitory pathway that prevents CASP8 activation following FAS stimulation, rather than blocking apoptotic signals downstream.

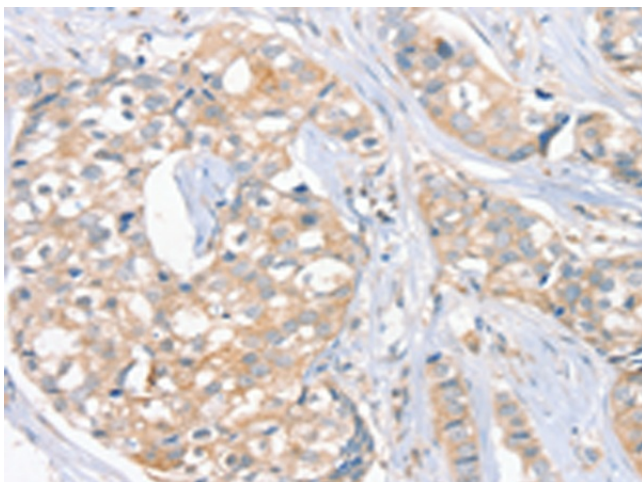
Synonyms: FAIM3; TOSO

Protein Families: Druggable Genome, Transmembrane

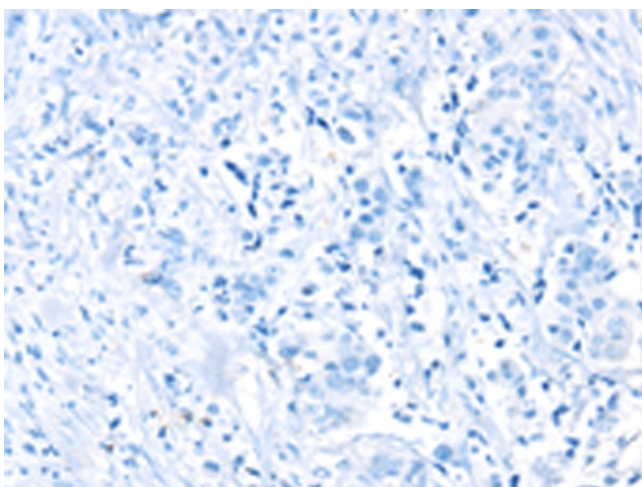
Product images:



Gel: 8%SDS-PAGE
Lysate: 40 µg
Lane: Human lymphoma tissue
Primary antibody: TA349955 (FCMR Antibody) at dilution 1/200
Secondary antibody: Goat anti rabbit IgG at 1/8000 dilution
Exposure time: 40 seconds



Immunohistochemistry of paraffin-embedded Human breast cancer tissue using TA349955 (FCMR Antibody) at dilution 1/20 (Original magnification: ×200)



Immunohistochemistry of paraffin-embedded Human breast cancer tissue using TA349955 (FCMR Antibody) at dilution 1/20, treated with fusion protein. (Original magnification: ×200)