

## Product datasheet for **TA349950**

### Ezrin (EZR) Rabbit Polyclonal Antibody

#### Product data:

|                         |   |
|-------------------------|---|
| Product Type:           | Primary Antibodies  |
| Applications:           | IHC, WB   |
| Recommended Dilution:   | WB: 500-2000<br>WB positive control: Mouse kidney tissue<br>IHC: 50-200<br>Positive control: Human thyroid cancer<br>Predicted cell location: Cytoplasm                     |
| Reactivity:             | Human, Mouse, Rat   |
| Host:                   | Rabbit  |
| Isotype:                | IgG   |
| Clonality:              | Polyclonal  |
| Immunogen:              | Fusion protein of human EZR   |
| Formulation:            | pH7.4 PBS, 0.05% NaN <sub>3</sub> , 40% Glycerol  |
| Concentration:          | lot specific  |
| Purification:           | Antigen affinity purification   |
| Conjugation:            | Unconjugated  |
| Storage:                | Store at -20°C as received.   |
| Stability:              | Stable for 12 months from date of receipt.  |
| Predicted Protein Size: | 69 kDa  |
| Gene Name:              | ezrin   |
| Database Link:          | <a href="#">NP_003370</a><br><a href="#">Entrez Gene 22350 Mouse</a> <a href="#">Entrez Gene 54319 Rat</a> <a href="#">Entrez Gene 7430 Human</a><br><a href="#">P15311</a> |



[View online »](#)

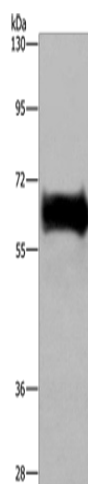
**Background:** The cytoplasmic peripheral membrane protein encoded by this gene functions as a protein-tyrosine kinase substrate in microvilli. As a member of the ERM protein family, this protein serves as an intermediate between the plasma membrane and the actin cytoskeleton. This protein plays a key role in cell surface structure adhesion, migration and organization, and it has been implicated in various human cancers. A pseudogene located on chromosome 3 has been identified for this gene. Alternatively spliced variants have also been described for this gene.

**Synonyms:** CVIL; CVL; HEL-S-105; VIL2

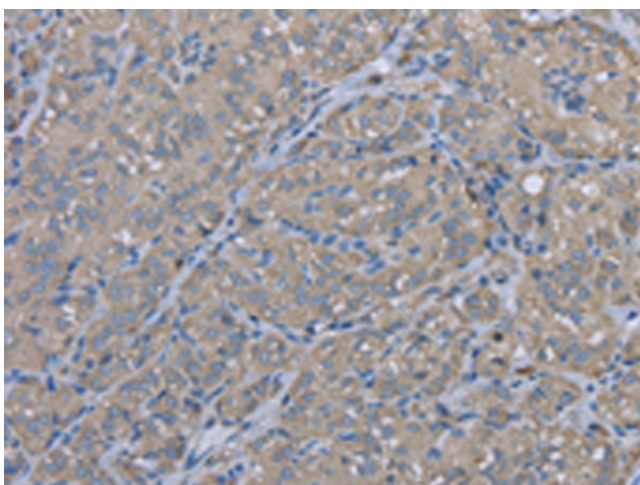
**Protein Families:** Druggable Genome

**Protein Pathways:** Leukocyte transendothelial migration, Pathogenic Escherichia coli infection, Regulation of actin cytoskeleton

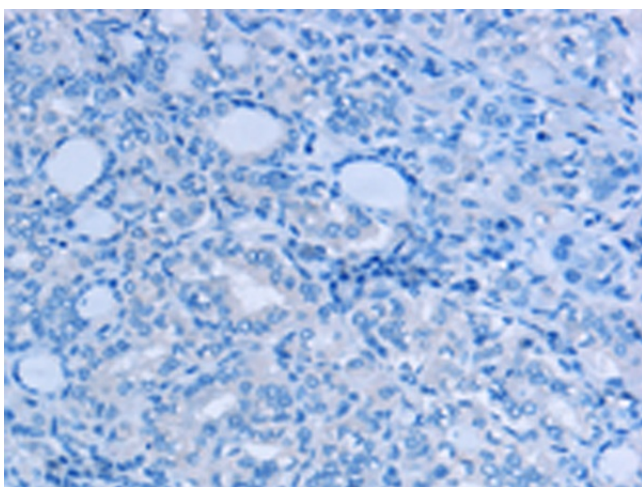
### Product images:



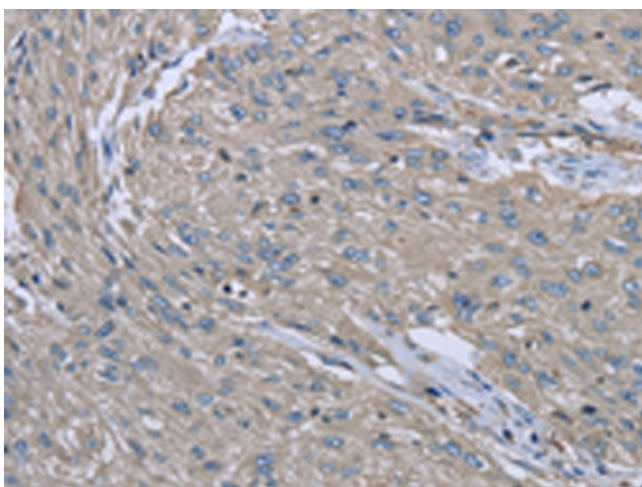
Gel: 6%SDS-PAGE  
Lysate: 40 µg  
Lane: Mouse kidney tissue  
Primary antibody: TA349950 (EZR Antibody) at dilution 1/300  
Secondary antibody: Goat anti rabbit IgG at 1/8000 dilution  
Exposure time: 30 seconds



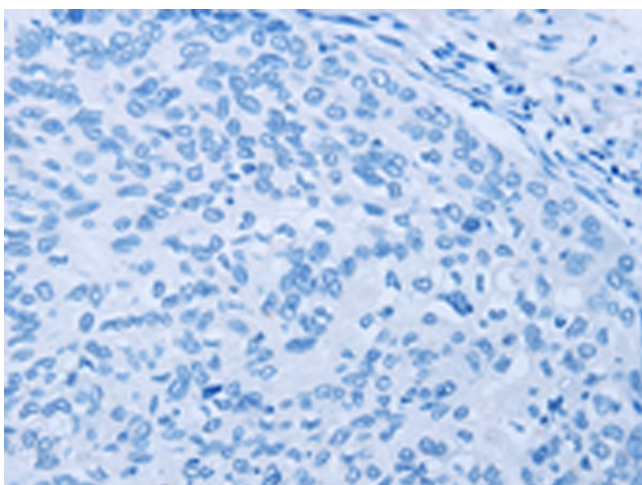
Immunohistochemistry of paraffin-embedded Human thyroid cancer tissue using TA349950 (EZR Antibody) at dilution 1/30 (Original magnification: ×200)



Immunohistochemistry of paraffin-embedded Human thyroid cancer tissue using TA349950 (EZR Antibody) at dilution 1/30, treated with fusion protein. (Original magnification: ×200)



Immunohistochemistry of paraffin-embedded Human esophagus cancer tissue using TA349950 (EZR Antibody) at dilution 1/30 (Original magnification: ×200)



Immunohistochemistry of paraffin-embedded Human esophagus cancer tissue using TA349950 (EZR Antibody) at dilution 1/30, treated with fusion protein. (Original magnification: ×200)