

Product datasheet for **TA349948**

ETV7 Rabbit Polyclonal Antibody

Product data:

Product Type:	Primary Antibodies
Applications:	IHC, WB
Recommended Dilution:	ELISA: 2000-5000, WB: 500-2000, IHC: 50-200
Reactivity:	Human, Mouse
Host:	Rabbit
Isotype:	IgG
Clonality:	Polyclonal
Immunogen:	Fusion protein of human ETV7
Formulation:	pH7.4 PBS, 0.05% NaN ₃ , 40% Glycerol
Concentration:	lot specific
Purification:	Antigen affinity purification
Conjugation:	Unconjugated
Storage:	Store at -20°C as received.
Stability:	Stable for 12 months from date of receipt.
Predicted Protein Size:	39 kDa
Gene Name:	ETS variant 7
Database Link:	NP_057219 Entrez Gene 51513 Human Q9Y603

Background: The protein encoded by this gene belongs to the ETS family of transcription factors, which is a large group of evolutionarily conserved transcriptional regulators that play an important role in a variety of cellular processes throughout development and differentiation, and are involved in oncogenesis as well. This protein is predominantly expressed in hematopoietic tissues. Several alternatively spliced transcript variants encoding different isoforms have been described for this gene

Synonyms: TEL-2; TEL2; TELB

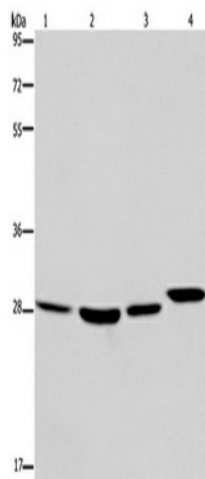
Protein Families: Druggable Genome, Transcription Factors



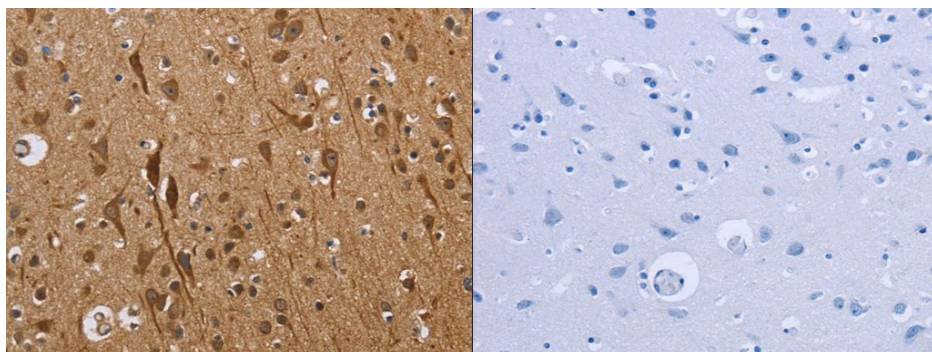
[View online »](#)

Protein Pathways: Dorso-ventral axis formation

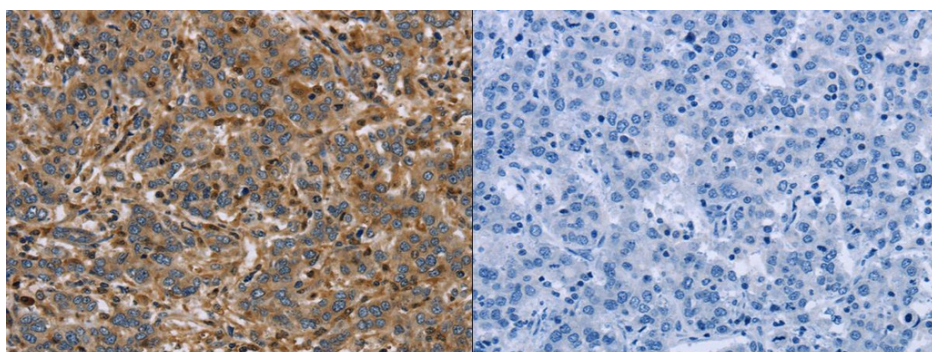
Product images:



Gel: 8%SDS-PAGE, Lysate: 40 ug, Lane 1-4: 293T cells, LoVo cells, mouse skin tissue, A172 cells, Primary antibody: (ETV7 Antibody) at dilution 1/850, Secondary antibody: Goat anti rabbit IgG at 1/8000 dilution, Exposure time: 30 seconds



The image on the left is immunohistochemistry of paraffin-embedded Human brain tissue using (ETV7 Antibody) at dilution 1/40, on the right is treated with fusion protein. (Original magnification: ×200)



The image on the left is immunohistochemistry of paraffin-embedded Human liver cancer tissue using (ETV7 Antibody) at dilution 1/40, on the right is treated with fusion protein. (Original magnification: ×200)