

Product datasheet for **TA349945**

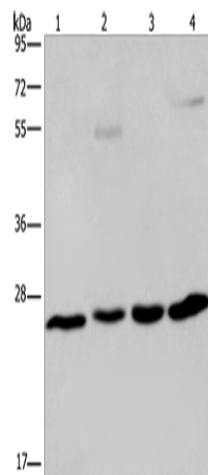
ETHE1 Rabbit Polyclonal Antibody

Product data:

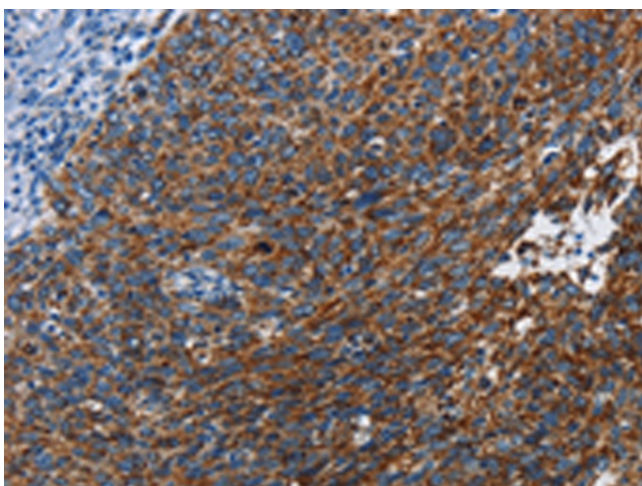
Product Type:	Primary Antibodies
Applications:	IHC, WB
Recommended Dilution:	WB: 500-2000 WB positive control: A549 cells and human hepatocellular carcinoma, mouse liver tissue and HT-29 cells IHC: 50-200 Positive control: Human cervical cancer Predicted cell location: Cytoplasm
Reactivity:	Human, Mouse
Host:	Rabbit
Isotype:	IgG
Clonality:	Polyclonal
Immunogen:	Fusion protein of human ETHE1
Formulation:	pH7.4 PBS, 0.05% NaN ₃ , 40% Glycerol
Concentration:	lot specific
Purification:	Antigen affinity purification
Conjugation:	Unconjugated
Storage:	Store at -20°C as received.
Stability:	Stable for 12 months from date of receipt.
Predicted Protein Size:	28 kDa
Gene Name:	ETHE1, persulfide dioxygenase
Database Link:	NP_055112 Entrez Gene 66071 Mouse Entrez Gene 23474 Human O95571
Background:	This gene encodes a sulfur dioxygenase that localizes within the mitochondrial matrix. The enzyme functions in sulfide catabolism. Mutations in this gene result in ethylmalonic encephalopathy.
Synonyms:	HSCO; YF13H12



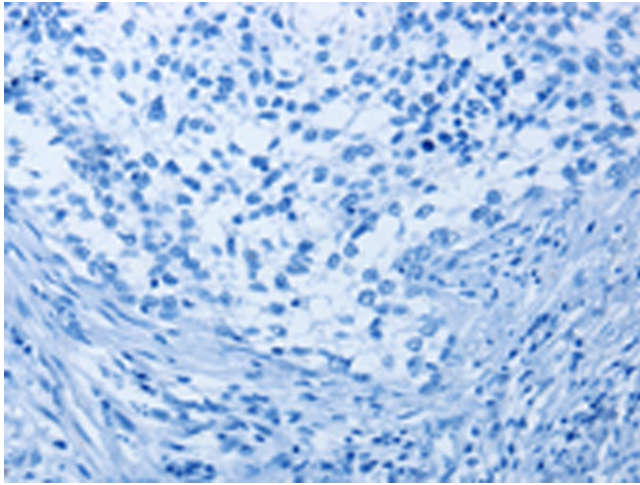
[View online »](#)

Product images:

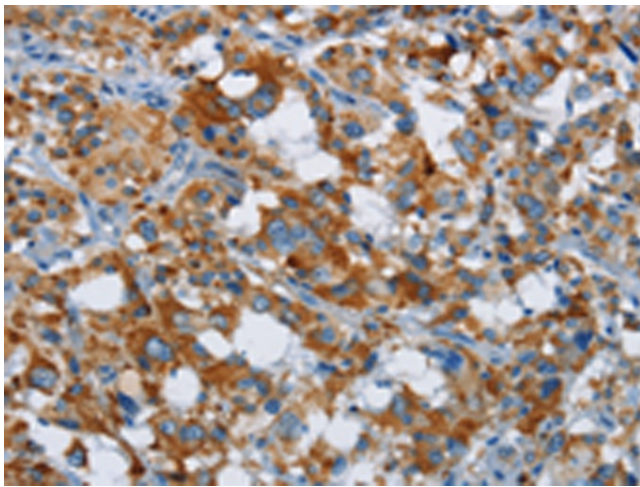
Gel: 10%SDS-PAGE
Lysate: 40 μ g
Lane 1-4: A549 cells
human hepatocellular carcinoma tissue
mouse liver tissue
HT29 cells
Primary antibody: TA349945 (ETHE1 Antibody) at dilution 1/400
Secondary antibody: Goat anti rabbit IgG at 1/8000 dilution
Exposure time: 1 minute



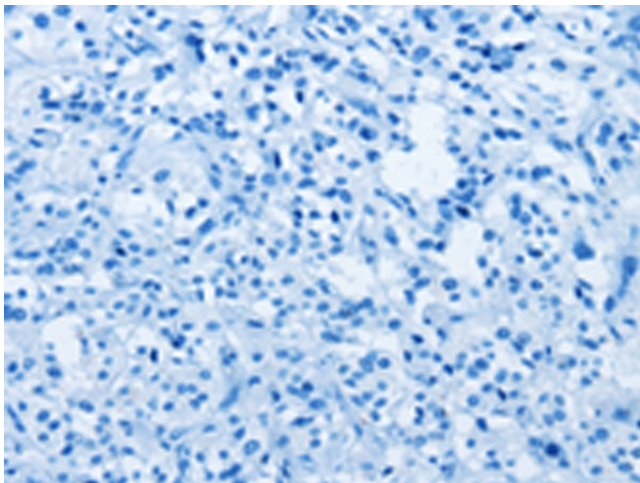
Immunohistochemistry of paraffin-embedded Human cervical cancer tissue using TA349945 (ETHE1 Antibody) at dilution 1/20 (Original magnification: \times 200)



Immunohistochemistry of paraffin-embedded Human cervical cancer tissue using TA349945 (ETHE1 Antibody) at dilution 1/20, treated with fusion protein. (Original magnification: $\times 200$)



Immunohistochemistry of paraffin-embedded Human thyroid cancer tissue using TA349945 (ETHE1 Antibody) at dilution 1/20 (Original magnification: $\times 200$)



Immunohistochemistry of paraffin-embedded Human thyroid cancer tissue using TA349945 (ETHE1 Antibody) at dilution 1/20, treated with fusion protein. (Original magnification: $\times 200$)