

## Product datasheet for **TA349934S**

### ENTPD5 Rabbit Polyclonal Antibody

#### Product data:

Product Type:	Primary Antibodies
Applications:	IHC, WB
Recommended Dilution:	WB: 200-1000 WB positive control: Mouse liver tissue IHC: 50-200 Positive control: Human liver cancer Predicted cell location: Cytoplasm
Reactivity:	Human, Mouse, Rat
Host:	Rabbit
Isotype:	IgG
Clonality:	Polyclonal
Immunogen:	Fusion protein of human ENTPD5
Formulation:	pH7.4 PBS, 0.05% NaN <sub>3</sub> , 40% Glycerol
Purification:	Antigen affinity purification
Conjugation:	Unconjugated
Storage:	Store at -20°C as received.
Stability:	Stable for 12 months from date of receipt.
Predicted Protein Size:	48 kDa
Gene Name:	ectonucleoside triphosphate diphosphohydrolase 5
Database Link:	<a href="#">NP_001240</a> <a href="#">Entrez Gene 12499 MouseEntrez Gene 314312 RatEntrez Gene 957 Human O75356</a>
Background:	The protein encoded by this gene is similar to E-type nucleotidases (NTPases)/ecto-ATPase/apyrases. NTPases, such as CD39, mediate catabolism of extracellular nucleotides. ENTPD5 contains 4 apyrase-conserved regions which is characteristic of NTPases.
Synonyms:	CD39L4; NTPDase-5; PCPH
Protein Families:	Transmembrane



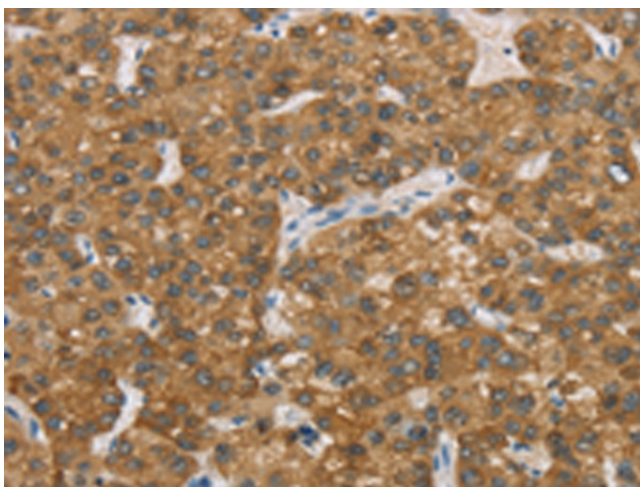
[View online »](#)

Protein Pathways: Purine metabolism, Pyrimidine metabolism

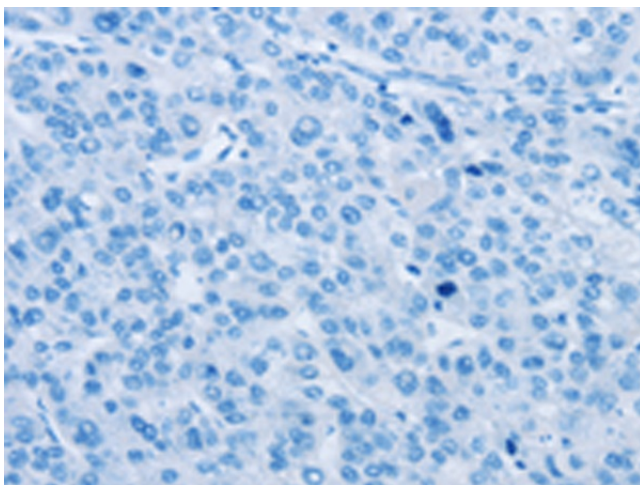
### Product images:



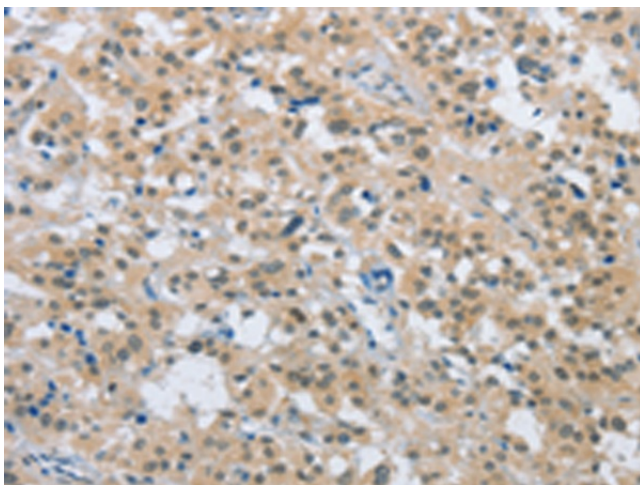
Gel: 8%SDS-PAGE  
Lysate: 40  $\mu$ g  
Lane: Mouse liver tissue  
Primary antibody: [TA349934] (ENTPD5 Antibody) at dilution 1/500  
Secondary antibody: Goat anti rabbit IgG at 1/8000 dilution  
Exposure time: 5 minutes



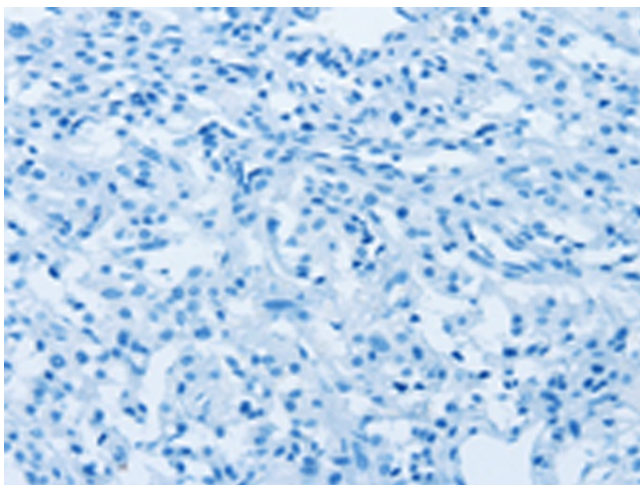
Immunohistochemistry of paraffin-embedded Human liver cancer tissue using [TA349934] (ENTPD5 Antibody) at dilution 1/20 (Original magnification:  $\times$ 200)



Immunohistochemistry of paraffin-embedded Human liver cancer tissue using [TA349934] (ENTPD5 Antibody) at dilution 1/20, treated with fusion protein. (Original magnification:  $\times 200$ )



Immunohistochemistry of paraffin-embedded Human thyroid cancer tissue using [TA349934] (ENTPD5 Antibody) at dilution 1/20 (Original magnification:  $\times 200$ )



Immunohistochemistry of paraffin-embedded Human thyroid cancer tissue using [TA349934] (ENTPD5 Antibody) at dilution 1/20, treated with fusion protein. (Original magnification:  $\times 200$ )