

Product datasheet for **TA349934**

ENTPD5 Rabbit Polyclonal Antibody

Product data:

Product Type:	Primary Antibodies
Applications:	IHC, WB
Recommended Dilution:	WB: 200-1000 WB positive control: Mouse liver tissue IHC: 50-200 Positive control: Human liver cancer Predicted cell location: Cytoplasm
Reactivity:	Human, Mouse, Rat
Host:	Rabbit
Isotype:	IgG
Clonality:	Polyclonal
Immunogen:	Fusion protein of human ENTPD5
Formulation:	pH7.4 PBS, 0.05% NaN ₃ , 40% Glycerol
Concentration:	lot specific
Purification:	Antigen affinity purification
Conjugation:	Unconjugated
Storage:	Store at -20°C as received.
Stability:	Stable for 12 months from date of receipt.
Predicted Protein Size:	48 kDa
Gene Name:	ectonucleoside triphosphate diphosphohydrolase 5
Database Link:	NP_001240 Entrez Gene 12499 Mouse Entrez Gene 314312 Rat Entrez Gene 957 Human O75356
Background:	The protein encoded by this gene is similar to E-type nucleotidases (NTPases)/ecto-ATPase/apyrases. NTPases, such as CD39, mediate catabolism of extracellular nucleotides. ENTPD5 contains 4 apyrase-conserved regions which is characteristic of NTPases.
Synonyms:	CD39L4; NTPDase-5; PCPH

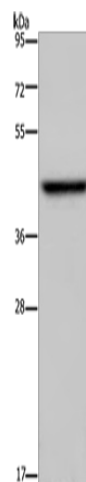


[View online »](#)

Protein Families: Transmembrane

Protein Pathways: Purine metabolism, Pyrimidine metabolism

Product images:



Gel: 8%SDS-PAGE

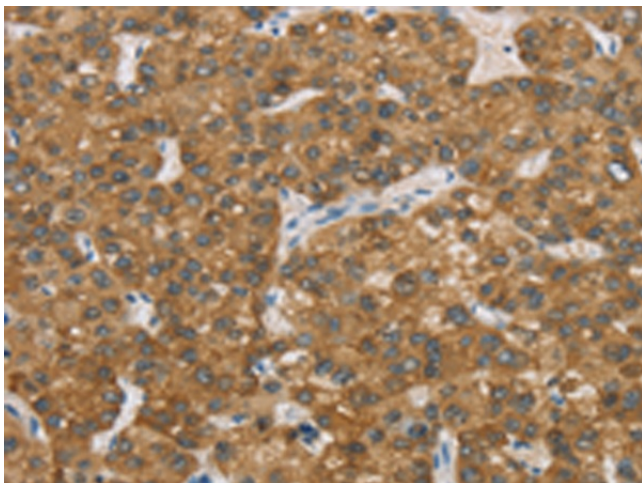
Lysate: 40 μ g

Lane: Mouse liver tissue

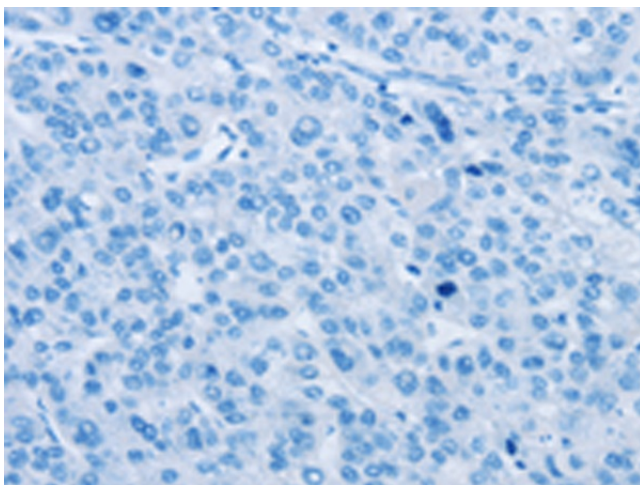
Primary antibody: TA349934 (ENTPD5 Antibody)
at dilution 1/500

Secondary antibody: Goat anti rabbit IgG at
1/8000 dilution

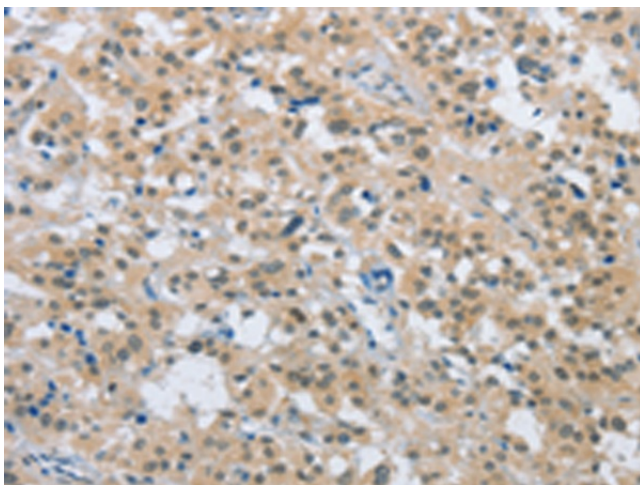
Exposure time: 5 minutes



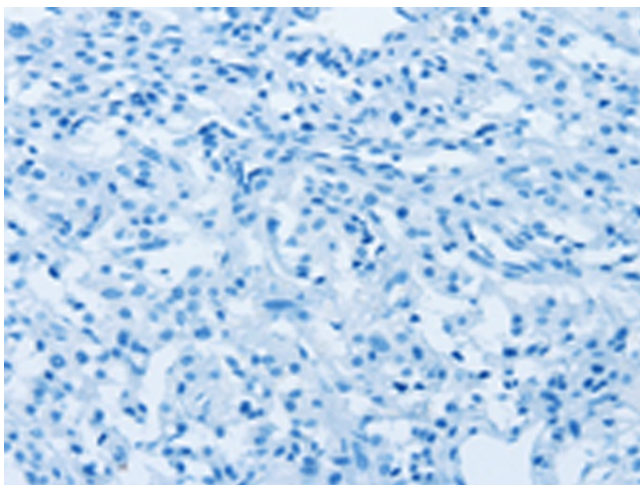
Immunohistochemistry of paraffin-embedded
Human liver cancer tissue using TA349934
(ENTPD5 Antibody) at dilution 1/20 (Original
magnification: \times 200)



Immunohistochemistry of paraffin-embedded Human liver cancer tissue using TA349934 (ENTPD5 Antibody) at dilution 1/20, treated with fusion protein. (Original magnification: x200)



Immunohistochemistry of paraffin-embedded Human thyroid cancer tissue using TA349934 (ENTPD5 Antibody) at dilution 1/20 (Original magnification: x200)



Immunohistochemistry of paraffin-embedded Human thyroid cancer tissue using TA349934 (ENTPD5 Antibody) at dilution 1/20, treated with fusion protein. (Original magnification: x200)