

## Product datasheet for **TA349931**

### **Kir6.2 (KCNJ11) Rabbit Polyclonal Antibody**

#### **Product data:**

Product Type:	Primary Antibodies
Applications:	IHC
Recommended Dilution:	IHC: 50-200 Positive control: Human colon cancer Predicted cell location: Cytoplasm
Reactivity:	Human, Mouse, Rat
Host:	Rabbit
Isotype:	IgG
Clonality:	Polyclonal
Immunogen:	Fusion protein of human KCNJ11
Formulation:	pH7.4 PBS, 0.05% NaN <sub>3</sub> , 40% Glycerol
Concentration:	lot specific
Purification:	Antigen affinity purification
Conjugation:	Unconjugated
Storage:	Store at -20°C as received.
Stability:	Stable for 12 months from date of receipt.
Gene Name:	potassium voltage-gated channel subfamily J member 11
Database Link:	<a href="#">NP_000516</a> <a href="#">Entrez Gene 16514 Mouse</a> <a href="#">Entrez Gene 83535 Rat</a> <a href="#">Entrez Gene 3767 Human</a> <a href="#">Q14654</a>



[View online »](#)

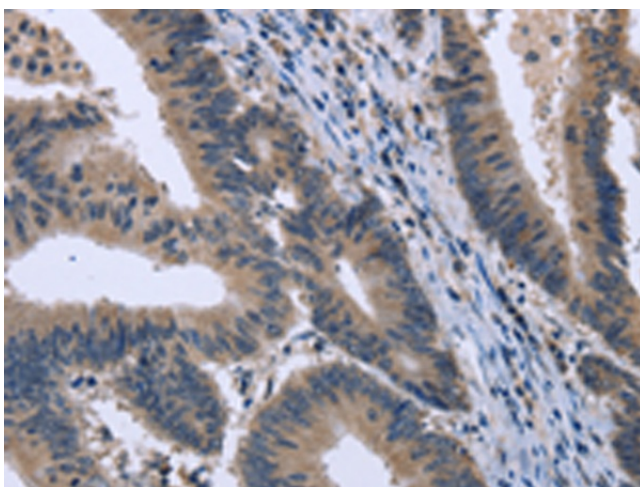
**Background:** Potassium channels are present in most mammalian cells, where they participate in a wide range of physiologic responses. The protein encoded by this gene is an integral membrane protein and inward-rectifier type potassium channel. The encoded protein, which has a greater tendency to allow potassium to flow into a cell rather than out of a cell, is controlled by G-proteins and is found associated with the sulfonylurea receptor SUR. Mutations in this gene are a cause of familial persistent hyperinsulinemic hypoglycemia of infancy (PHHI), an autosomal recessive disorder characterized by unregulated insulin secretion. Defects in this gene may also contribute to autosomal dominant non-insulin-dependent diabetes mellitus type II (NIDDM), transient neonatal diabetes mellitus type 3 (TNDM3), and permanent neonatal diabetes mellitus (PNDM). Multiple alternatively spliced transcript variants that encode different protein isoforms have been described for this gene.

**Synonyms:** BIR; HHF2; IKATP; KIR6.2; MODY13; PHHI; TNDM3

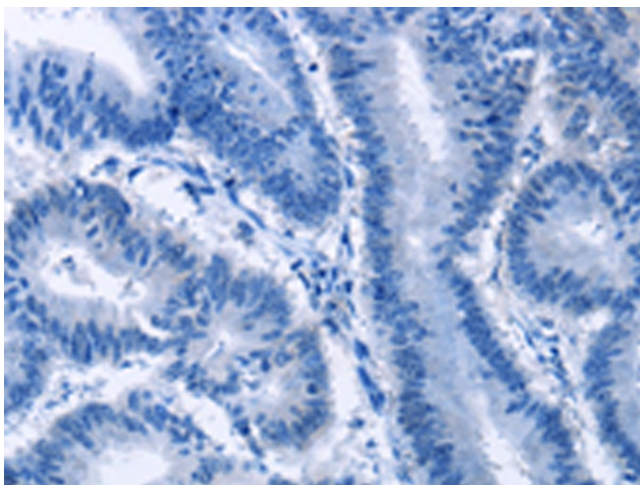
**Protein Families:** Druggable Genome, Ion Channels: Potassium, Transmembrane

**Protein Pathways:** Type II diabetes mellitus

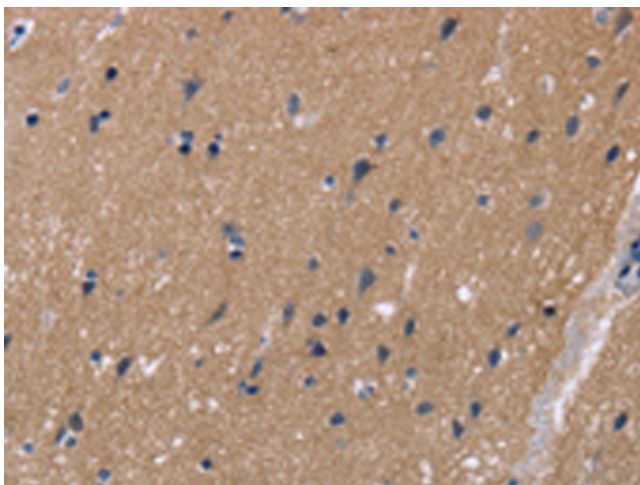
### Product images:



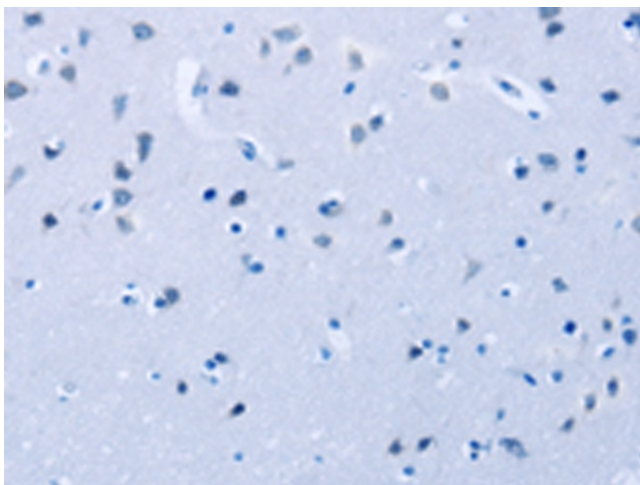
Immunohistochemistry of paraffin-embedded Human colon cancer tissue using TA349931 (KCNJ11 Antibody) at dilution 1/40 (Original magnification:  $\times 200$ )



Immunohistochemistry of paraffin-embedded Human colon cancer tissue using TA349931 (KCNJ11 Antibody) at dilution 1/40, treated with fusion protein. (Original magnification: ×200)



Immunohistochemistry of paraffin-embedded Human brain tissue using TA349931 (KCNJ11 Antibody) at dilution 1/40 (Original magnification: ×200)



Immunohistochemistry of paraffin-embedded Human brain tissue using TA349931 (KCNJ11 Antibody) at dilution 1/40, treated with fusion protein. (Original magnification: ×200)