

## Product datasheet for **TA349929S**

### ELAC2 Rabbit Polyclonal Antibody

#### Product data:

Product Type:	Primary Antibodies
Applications:	IHC, WB
Recommended Dilution:	WB: 200-1000 WB positive control: LoVo and Hela cells IHC: 50-200 Positive control: Human gastric cancer Predicted cell location: Nucleus
Reactivity:	Human, Mouse, Rat
Host:	Rabbit
Isotype:	IgG
Clonality:	Polyclonal
Immunogen:	Fusion protein of human ELAC2
Formulation:	pH7.4 PBS, 0.05% NaN <sub>3</sub> , 40% Glycerol
Purification:	Antigen affinity purification
Conjugation:	Unconjugated
Storage:	Store at -20°C as received.
Stability:	Stable for 12 months from date of receipt.
Predicted Protein Size:	92 kDa
Gene Name:	elaC ribonuclease Z 2
Database Link:	<a href="#">NP_060597</a> <a href="#">Entrez Gene 60528 Human</a> <a href="#">Q9BQ52</a>



[View online »](#)

**Background:**

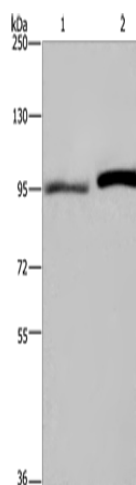
The protein encoded by this gene has a C-terminal domain with tRNA 3' processing endoribonuclease activity, which catalyzes the removal of the 3' trailer from precursor tRNAs. The protein also interacts with activated Smad family member 2 (Smad2) and its nuclear partner forkhead box H1 (also known as FAST-1), and reduced expression can suppress transforming growth factor-beta induced growth arrest. Mutations in this gene result in an increased risk of prostate cancer. Multiple transcript variants encoding different isoforms have been found for this gene.

**Synonyms:**

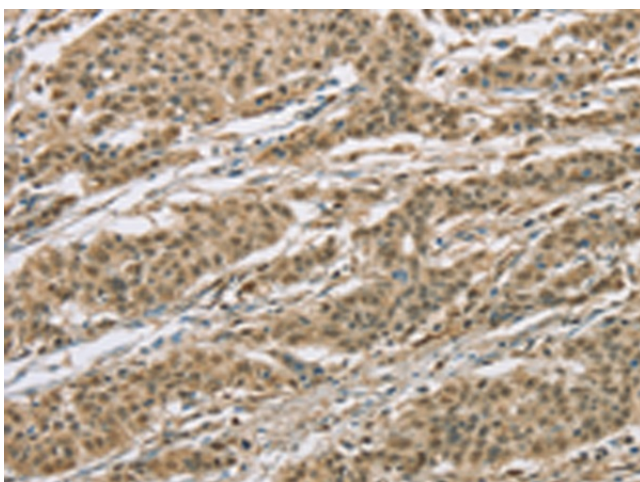
COXPD17; ELC2; HPC2

**Protein Families:**

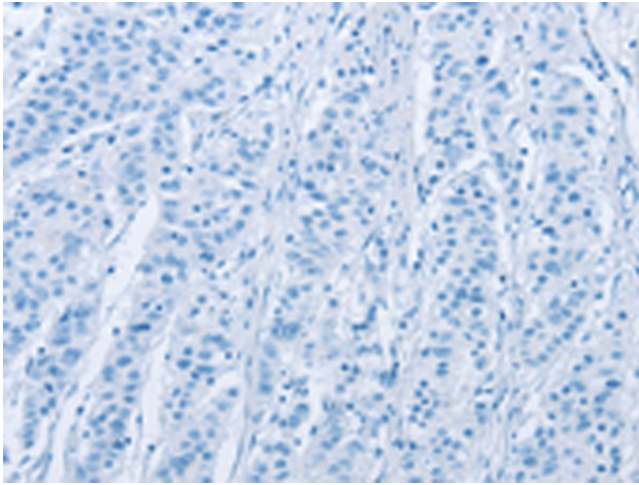
Druggable Genome, Stem cell - Pluripotency

**Product images:**

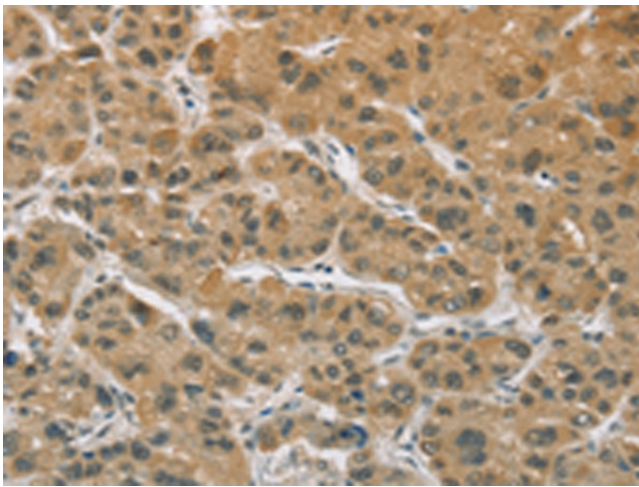
Gel: 6%SDS-PAGE  
Lysate: 40 µg  
Lane 1-2: LoVo cells  
HeLa cells  
Primary antibody: [TA349929] (ELAC2 Antibody)  
at dilution 1/250  
Secondary antibody: Goat anti rabbit IgG at  
1/8000 dilution  
Exposure time: 1 minute



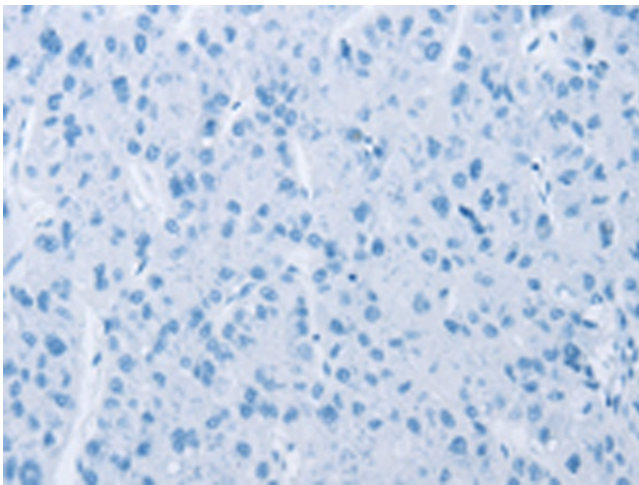
Immunohistochemistry of paraffin-embedded  
Human gastric cancer tissue using [TA349929]  
(ELAC2 Antibody) at dilution 1/30 (Original  
magnification: ×200)



Immunohistochemistry of paraffin-embedded Human gastric cancer tissue using [TA349929] (ELAC2 Antibody) at dilution 1/30, treated with fusion protein. (Original magnification: ×200)



Immunohistochemistry of paraffin-embedded Human liver cancer tissue using [TA349929] (ELAC2 Antibody) at dilution 1/30 (Original magnification: ×200)



Immunohistochemistry of paraffin-embedded Human liver cancer tissue using [TA349929] (ELAC2 Antibody) at dilution 1/30, treated with fusion protein. (Original magnification: ×200)