

## Product datasheet for **TA349927S**

### Integrin beta 4 binding protein (EIF6) Rabbit Polyclonal Antibody

#### Product data:

Product Type:	Primary Antibodies
Applications:	IHC, WB
Recommended Dilution:	WB: 500-2000 WB positive control: A375, K562, HeLa, HepG2 and 293T cells IHC: 25-100 Positive control: Human gastric cancer Predicted cell location: Cytoplasm and Nucleus
Reactivity:	Human, Mouse, Rat
Host:	Rabbit
Isotype:	IgG
Clonality:	Polyclonal
Immunogen:	Fusion protein of human EIF6
Formulation:	pH7.4 PBS, 0.05% NaN <sub>3</sub> , 40% Glycerol
Purification:	Antigen affinity purification
Conjugation:	Unconjugated
Storage:	Store at -20°C as received.
Stability:	Stable for 12 months from date of receipt.
Predicted Protein Size:	27 kDa
Gene Name:	eukaryotic translation initiation factor 6
Database Link:	<a href="#">NP_852131</a> <a href="#">Entrez Gene 16418 MouseEntrez Gene 305506 RatEntrez Gene 3692 Human P56537</a>



[View online »](#)

**Background:**

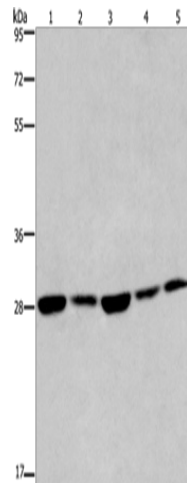
Hemidesmosomes are structures which link the basal lamina to the intermediate filament cytoskeleton. An important functional component of hemidesmosomes is the integrin beta-4 subunit (ITGB4), a protein containing two fibronectin type III domains. The protein encoded by this gene binds to the fibronectin type III domains of ITGB4 and may help link ITGB4 to the intermediate filament cytoskeleton. The encoded protein, which is insoluble and found both in the nucleus and in the cytoplasm, can function as a translation initiation factor and prevent the association of the 40S and 60S ribosomal subunits. Multiple non-protein coding transcript variants and variants encoding two different isoforms have been found for this gene.

**Synonyms:**

b(2)gcn; CAB; eIF-6; EIF3A; ITGB4BP; p27(BBP); p27BBP

**Protein Families:**

Druggable Genome

**Product images:**


Gel: 8%SDS-PAGE

Lysate: 40 µg

Lane 1-5: A375 cells

K562 cells

HeLa cells

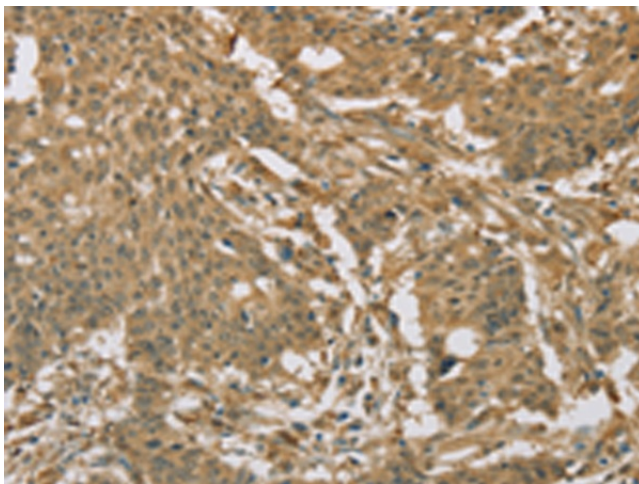
HepG2 cells

293T cells

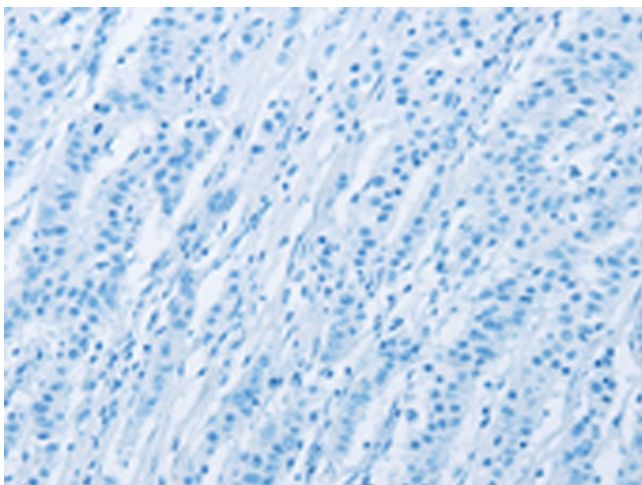
Primary antibody: [TA349927] (EIF6 Antibody) at dilution 1/200

Secondary antibody: Goat anti rabbit IgG at 1/8000 dilution

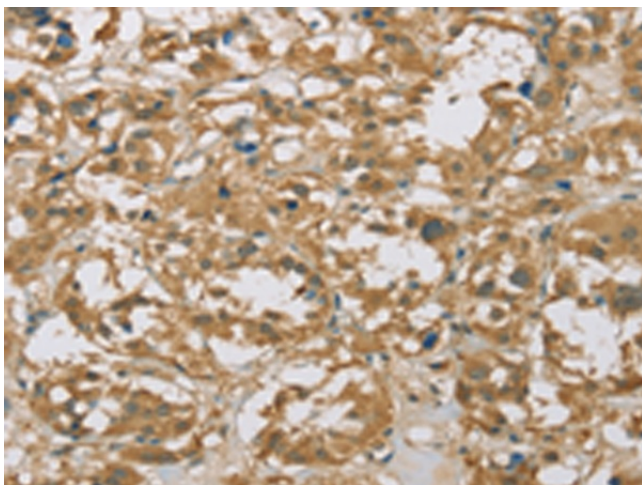
Exposure time: 20 seconds



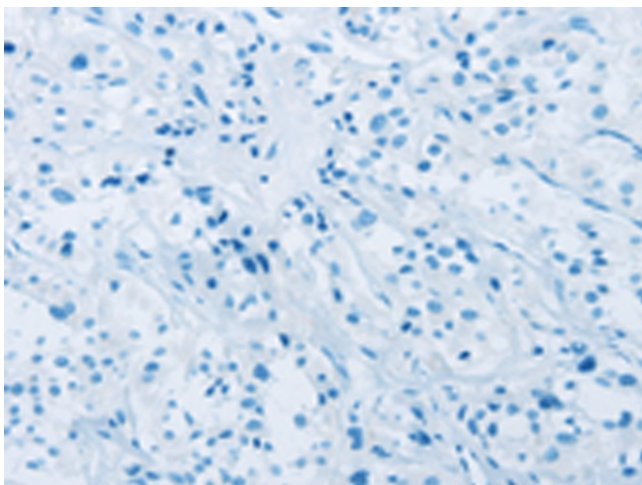
Immunohistochemistry of paraffin-embedded Human gastric cancer tissue using [TA349927] (EIF6 Antibody) at dilution 1/20 (Original magnification: ×200)



Immunohistochemistry of paraffin-embedded Human gastric cancer tissue using [TA349927] (EIF6 Antibody) at dilution 1/20, treated with fusion protein. (Original magnification:  $\times 200$ )



Immunohistochemistry of paraffin-embedded Human thyroid cancer tissue using [TA349927] (EIF6 Antibody) at dilution 1/20 (Original magnification:  $\times 200$ )



Immunohistochemistry of paraffin-embedded Human thyroid cancer tissue using [TA349927] (EIF6 Antibody) at dilution 1/20, treated with fusion protein. (Original magnification:  $\times 200$ )