

Product datasheet for **TA349927**

Integrin beta 4 binding protein (EIF6) Rabbit Polyclonal Antibody

Product data:

Product Type:	Primary Antibodies
Applications:	IHC, WB
Recommended Dilution:	WB: 500-2000 WB positive control: A375, K562, HeLa, HepG2 and 293T cells IHC: 25-100 Positive control: Human gastric cancer Predicted cell location: Cytoplasm and Nucleus
Reactivity:	Human, Mouse, Rat
Host:	Rabbit
Isotype:	IgG
Clonality:	Polyclonal
Immunogen:	Fusion protein of human EIF6
Formulation:	pH7.4 PBS, 0.05% NaN ₃ , 40% Glycerol
Concentration:	lot specific
Purification:	Antigen affinity purification
Conjugation:	Unconjugated
Storage:	Store at -20°C as received.
Stability:	Stable for 12 months from date of receipt.
Predicted Protein Size:	27 kDa
Gene Name:	eukaryotic translation initiation factor 6
Database Link:	NP_852131 Entrez Gene 16418 Mouse Entrez Gene 305506 Rat Entrez Gene 3692 Human P56537



[View online »](#)

Background:

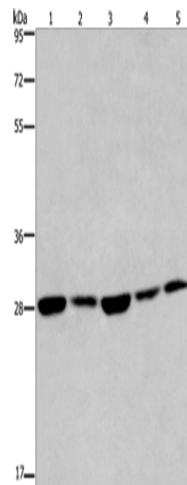
Hemidesmosomes are structures which link the basal lamina to the intermediate filament cytoskeleton. An important functional component of hemidesmosomes is the integrin beta-4 subunit (ITGB4), a protein containing two fibronectin type III domains. The protein encoded by this gene binds to the fibronectin type III domains of ITGB4 and may help link ITGB4 to the intermediate filament cytoskeleton. The encoded protein, which is insoluble and found both in the nucleus and in the cytoplasm, can function as a translation initiation factor and prevent the association of the 40S and 60S ribosomal subunits. Multiple non-protein coding transcript variants and variants encoding two different isoforms have been found for this gene.

Synonyms:

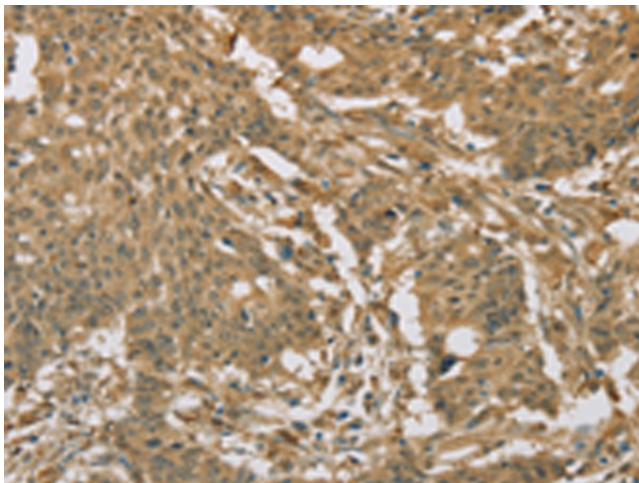
b(2)gcn; CAB; eIF-6; EIF3A; ITGB4BP; p27(BBP); p27BBP

Protein Families:

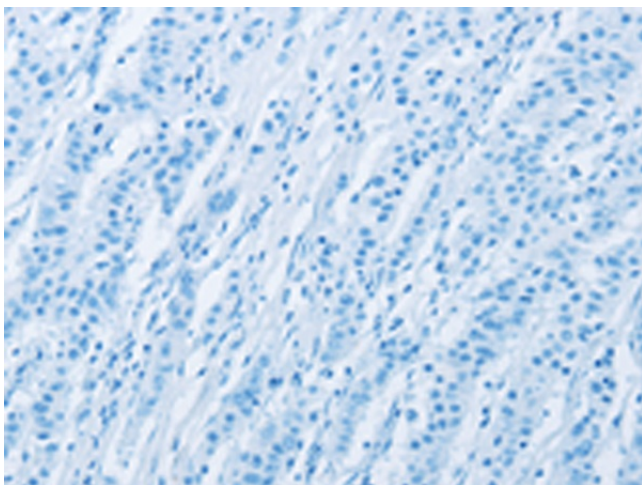
Druggable Genome

Product images:

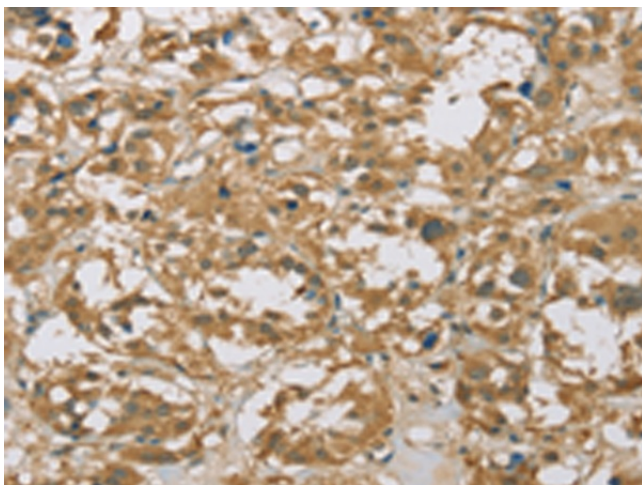
Gel: 8%SDS-PAGE
Lysate: 40 µg
Lane 1-5: A375 cells
K562 cells
Hela cells
HepG2 cells
293T cells
Primary antibody: TA349927 (EIF6 Antibody) at dilution 1/200
Secondary antibody: Goat anti rabbit IgG at 1/8000 dilution
Exposure time: 20 seconds



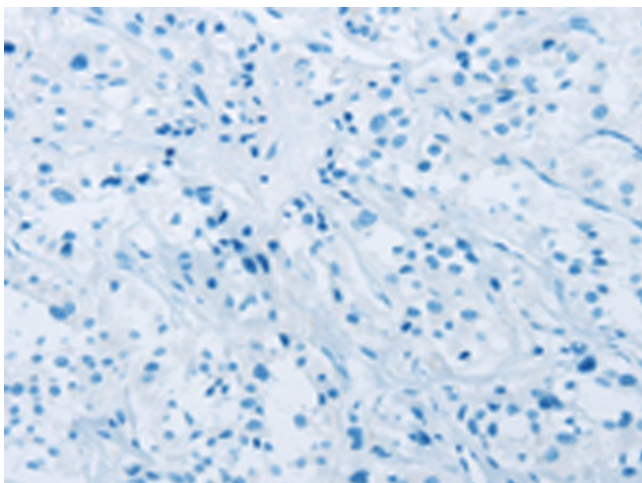
Immunohistochemistry of paraffin-embedded Human gastric cancer tissue using TA349927 (EIF6 Antibody) at dilution 1/20 (Original magnification: ×200)



Immunohistochemistry of paraffin-embedded Human gastric cancer tissue using TA349927 (EIF6 Antibody) at dilution 1/20, treated with fusion protein. (Original magnification: $\times 200$)



Immunohistochemistry of paraffin-embedded Human thyroid cancer tissue using TA349927 (EIF6 Antibody) at dilution 1/20 (Original magnification: $\times 200$)



Immunohistochemistry of paraffin-embedded Human thyroid cancer tissue using TA349927 (EIF6 Antibody) at dilution 1/20, treated with fusion protein. (Original magnification: $\times 200$)