

Product datasheet for **TA349922S**

EHHADH Rabbit Polyclonal Antibody

Product data:

Product Type:	Primary Antibodies
Applications:	IHC, WB
Recommended Dilution:	WB: 200-1000 WB positive control: Mouse liver tissue IHC: 50-200 Positive control: Human liver cancer Predicted cell location: Cytoplasm
Reactivity:	Human, Mouse
Host:	Rabbit
Isotype:	IgG
Clonality:	Polyclonal
Immunogen:	Fusion protein of human EHHADH
Formulation:	pH7.4 PBS, 0.05% NaN ₃ , 40% Glycerol
Purification:	Antigen affinity purification
Conjugation:	Unconjugated
Storage:	Store at -20°C as received.
Stability:	Stable for 12 months from date of receipt.
Predicted Protein Size:	79 kDa
Gene Name:	enoyl-CoA, hydratase/3-hydroxyacyl CoA dehydrogenase
Database Link:	NP_001957 Entrez Gene 1962 Human Q08426

Background: The protein encoded by this gene is a bifunctional enzyme and is one of the four enzymes of the peroxisomal beta-oxidation pathway. The N-terminal region of the encoded protein contains enoyl-CoA hydratase activity while the C-terminal region contains 3-hydroxyacyl-CoA dehydrogenase activity. Defects in this gene are a cause of peroxisomal disorders such as Zellweger syndrome. Two transcript variants encoding different isoforms have been found for this gene.



[View online »](#)

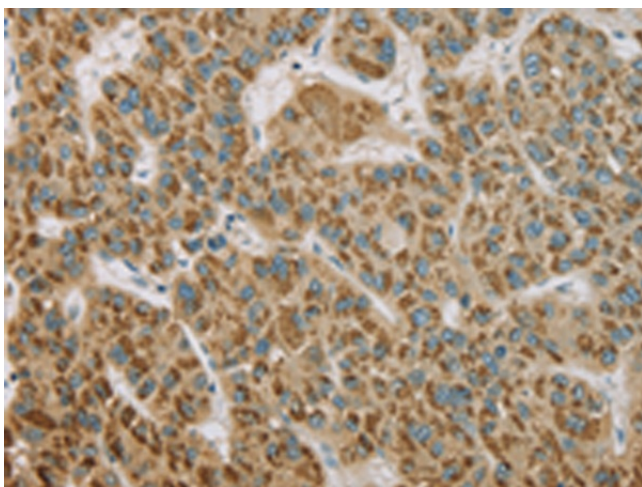
Synonyms: ECHD; FRTS3; L-PBE; LBFP; LBP; PBFE

Protein Pathways: beta-Alanine metabolism, Butanoate metabolism, Fatty acid metabolism, Limonene and pinene degradation, Lysine degradation, Metabolic pathways, PPAR signaling pathway, Propanoate metabolism, Tryptophan metabolism, Valine, leucine and isoleucine degradation

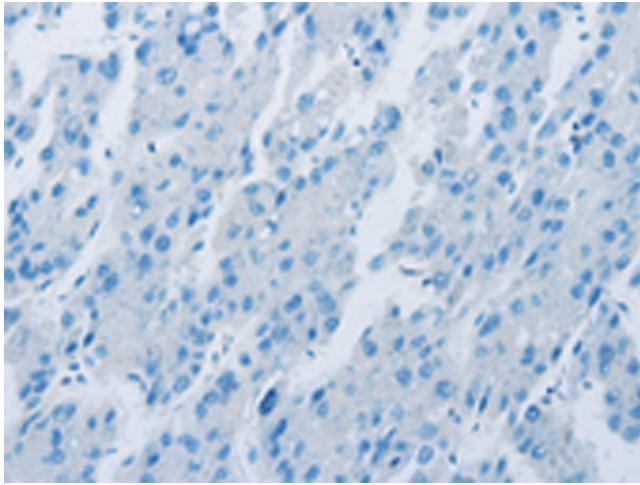
Product images:



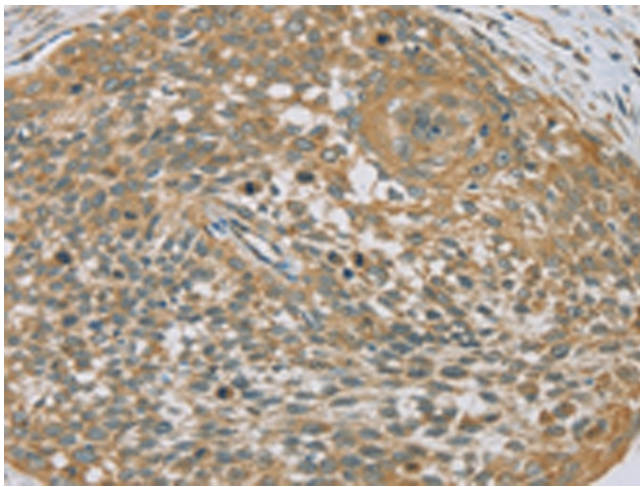
Gel: 6%SDS-PAGE
Lysate: 40 µg
Lane: Mouse liver tissue
Primary antibody: [TA349922] (EHHADH Antibody) at dilution 1/250
Secondary antibody: Goat anti rabbit IgG at 1/8000 dilution
Exposure time: 2 minutes



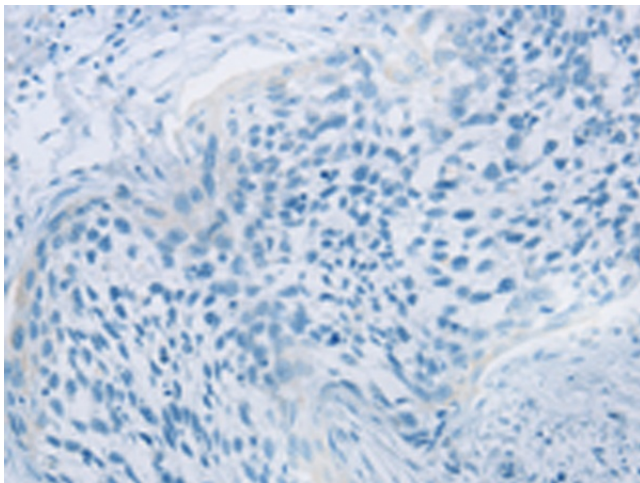
Immunohistochemistry of paraffin-embedded Human liver cancer tissue using [TA349922] (EHHADH Antibody) at dilution 1/20 (Original magnification: ×200)



Immunohistochemistry of paraffin-embedded Human liver cancer tissue using [TA349922] (EHHADH Antibody) at dilution 1/20, treated with fusion protein. (Original magnification: $\times 200$)



Immunohistochemistry of paraffin-embedded Human cervical cancer tissue using [TA349922] (EHHADH Antibody) at dilution 1/20 (Original magnification: $\times 200$)



Immunohistochemistry of paraffin-embedded Human cervical cancer tissue using [TA349922] (EHHADH Antibody) at dilution 1/20, treated with fusion protein. (Original magnification: $\times 200$)