

Product datasheet for **TA349921S**

EEF2K Rabbit Polyclonal Antibody

Product data:

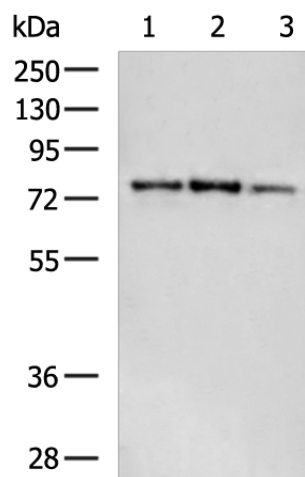
Product Type:	Primary Antibodies
Applications:	IHC, WB
Recommended Dilution:	WB: 500-2000 WB positive control: PC3, NIH/3T3, Jurkat cell lysates IHC: 50-200 Positive control: Human liver cancer Predicted cell location: Cytoplasm
Reactivity:	Human, Mouse, Rat
Host:	Rabbit
Isotype:	IgG
Clonality:	Polyclonal
Immunogen:	Fusion protein of human EEF2K
Formulation:	pH7.4 PBS, 0.05% NaN ₃ , 40% Glycerol
Purification:	Antigen affinity purification
Conjugation:	Unconjugated
Storage:	Store at -20°C as received.
Stability:	Stable for 12 months from date of receipt.
Predicted Protein Size:	82 kDa
Gene Name:	eukaryotic elongation factor 2 kinase
Database Link:	NP_037434 Entrez Gene 13631 MouseEntrez Gene 25435 RatEntrez Gene 29904 Human O00418
Background:	This gene encodes a highly conserved protein kinase in the calmodulin-mediated signaling pathway that links activation of cell surface receptors to cell division. This kinase is involved in the regulation of protein synthesis. It phosphorylates eukaryotic elongation factor 2 (EEF2) and thus inhibits the EEF2 function. The activity of this kinase is increased in many cancers and may be a valid target for anti-cancer treatment.
Synonyms:	eEF-2K; HSU93850



[View online »](#)

Protein Families: Druggable Genome, Protein Kinase

Product images:



Gel: 8%SDS-PAGE

Lysate: 40 μ g

Lane 1-3: PC3

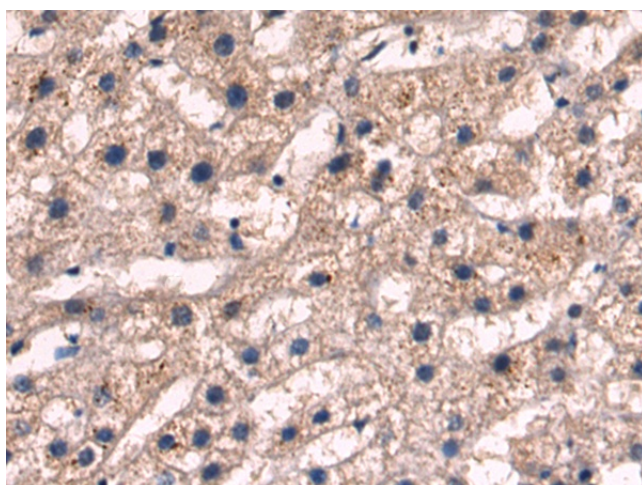
NIH/3T3

Jurkat cell lysates

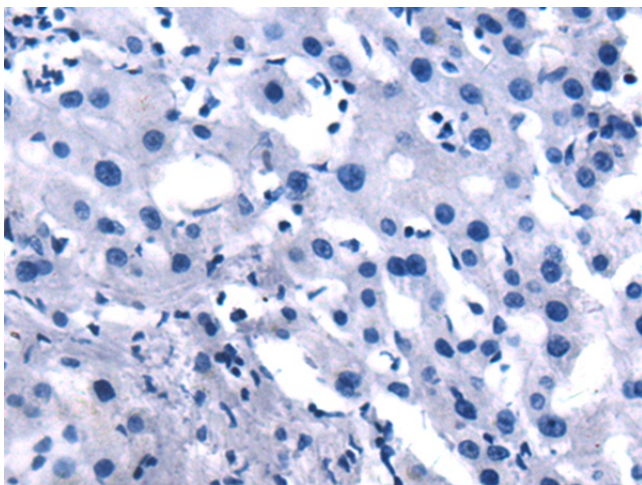
Primary antibody: [TA349921] (EEF2K Antibody) at dilution 1/500

Secondary antibody: Goat anti rabbit IgG at 1/5000 dilution

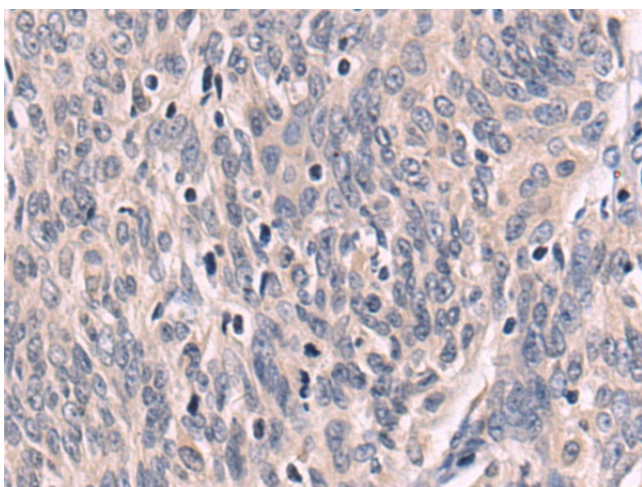
Exposure time: 1 minute



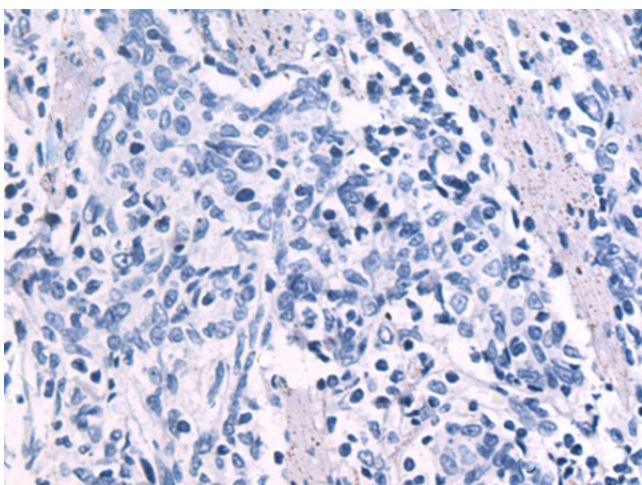
Immunohistochemistry of paraffin-embedded Human liver cancer tissue using [TA349921] (EEF2K Antibody) at dilution 1/80 (Original magnification: \times 200)



Immunohistochemistry of paraffin-embedded Human liver cancer tissue using [TA349921] (EEF2K Antibody) at dilution 1/80, treated with fusion protein. (Original magnification: ×200)



Immunohistochemistry of paraffin-embedded Human esophagus cancer tissue using [TA349921] (EEF2K Antibody) at dilution 1/80 (Original magnification: ×200)



Immunohistochemistry of paraffin-embedded Human esophagus cancer tissue using [TA349921] (EEF2K Antibody) at dilution 1/80, treated with fusion protein. (Original magnification: ×200)