

Product datasheet for **TA349919S**

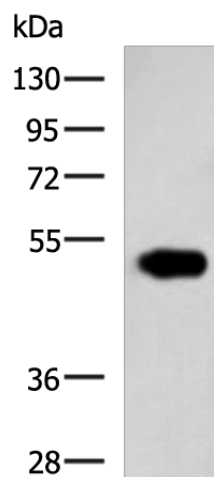
EDIL3 Rabbit Polyclonal Antibody

Product data:

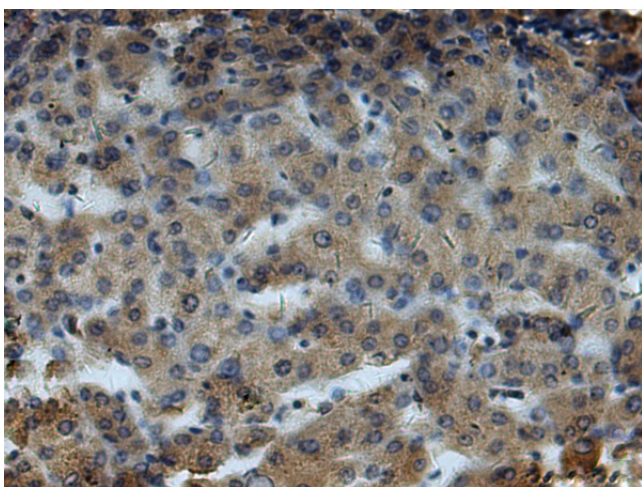
Product Type:	Primary Antibodies
Applications:	IHC, WB
Recommended Dilution:	WB: 500-2000 WB positive control: Human pancreas tissue lysate IHC: 100-300 Positive control: Human liver cancer Predicted cell location: Secreted
Reactivity:	Human, Mouse
Host:	Rabbit
Isotype:	IgG
Clonality:	Polyclonal
Immunogen:	Fusion protein of human EDIL3
Formulation:	pH7.4 PBS, 0.05% NaN ₃ , 40% Glycerol
Purification:	Antigen affinity purification
Conjugation:	Unconjugated
Storage:	Store at -20°C as received.
Stability:	Stable for 12 months from date of receipt.
Predicted Protein Size:	54 kDa
Gene Name:	EGF like repeats and discoidin domains 3
Database Link:	NP_005702 Entrez Gene 13612 Mouse Entrez Gene 10085 Human O43854
Background:	The protein encoded by this gene is an integrin ligand. It plays an important role in mediating angiogenesis and may be important in vessel wall remodeling and development. It also influences endothelial cell behavior.
Synonyms:	DEL1
Protein Families:	Druggable Genome, Secreted Protein



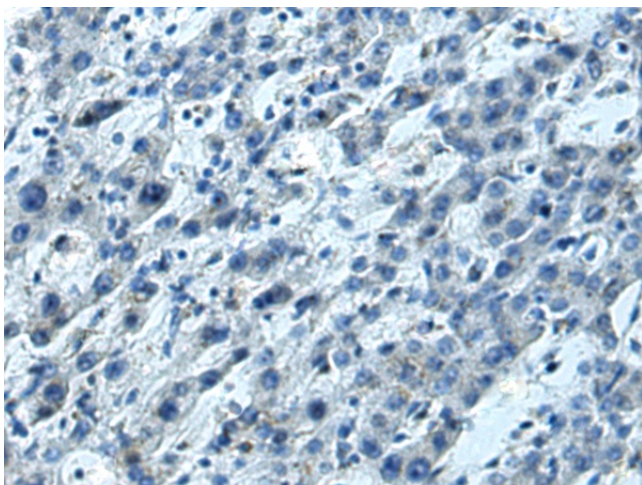
[View online »](#)

Product images:

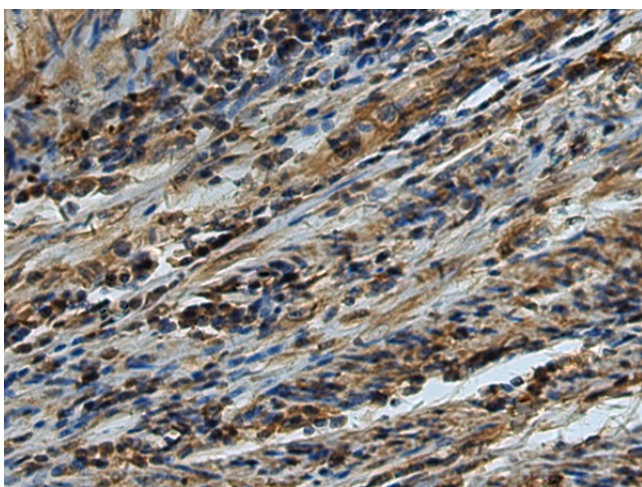
Gel: 8%SDS-PAGE
Lysate: 40 μ g
Lane: Human pancreas tissue lysate
Primary antibody: [TA349919] (EDIL3 Antibody) at dilution 1/700
Secondary antibody: Goat anti rabbit IgG at 1/5000 dilution
Exposure time: 1 minute



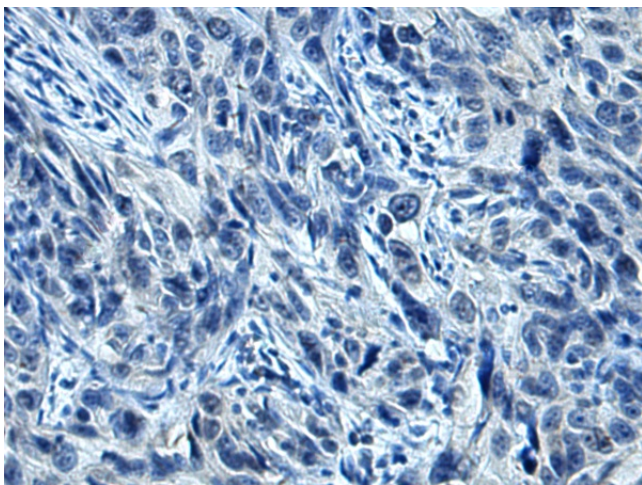
Immunohistochemistry of paraffin-embedded Human liver cancer tissue using [TA349919] (EDIL3 Antibody) at dilution 1/85 (Original magnification: \times 200)



Immunohistochemistry of paraffin-embedded Human liver cancer tissue using [TA349919] (EDIL3 Antibody) at dilution 1/85, treated with fusion protein. (Original magnification: ×200)



Immunohistochemistry of paraffin-embedded Human esophagus cancer tissue using [TA349919] (EDIL3 Antibody) at dilution 1/85 (Original magnification: ×200)



Immunohistochemistry of paraffin-embedded Human esophagus cancer tissue using [TA349919] (EDIL3 Antibody) at dilution 1/85, treated with fusion protein. (Original magnification: ×200)