

## Product datasheet for **TA349919**

### EDIL3 Rabbit Polyclonal Antibody

#### Product data:

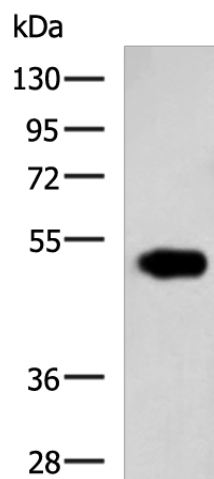
|                         |  |
|-------------------------|--|
| Product Type:           | Primary Antibodies   |
| Applications:           | IHC, WB  |
| Recommended Dilution:   | WB: 500-2000<br>WB positive control: Human pancreas tissue lysate<br>IHC: 100-300<br>Positive control: Human liver cancer<br>Predicted cell location: Secreted   |
| Reactivity:             | Human, Mouse   |
| Host:                   | Rabbit   |
| Isotype:                | IgG  |
| Clonality:              | Polyclonal   |
| Immunogen:              | Fusion protein of human EDIL3  |
| Formulation:            | pH7.4 PBS, 0.05% NaN <sub>3</sub> , 40% Glycerol   |
| Concentration:          | lot specific   |
| Purification:           | Antigen affinity purification  |
| Conjugation:            | Unconjugated   |
| Storage:                | Store at -20°C as received.  |
| Stability:              | Stable for 12 months from date of receipt.   |
| Predicted Protein Size: | 54 kDa   |
| Gene Name:              | EGF like repeats and discoidin domains 3   |
| Database Link:          | <a href="#">NP_005702</a><br><a href="#">Entrez Gene 13612 Mouse</a> <a href="#">Entrez Gene 10085 Human</a><br><a href="#">O43854</a>   |
| Background:             | The protein encoded by this gene is an integrin ligand. It plays an important role in mediating angiogenesis and may be important in vessel wall remodeling and development. It also influences endothelial cell behavior. |
| Synonyms:               | DEL1   |



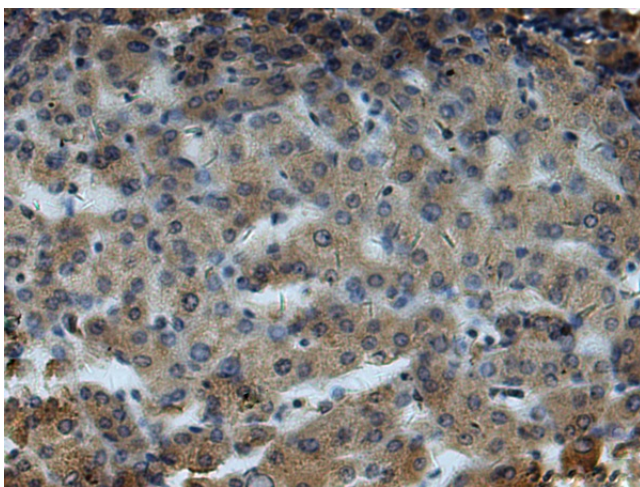
[View online »](#)

Protein Families: Druggable Genome, Secreted Protein

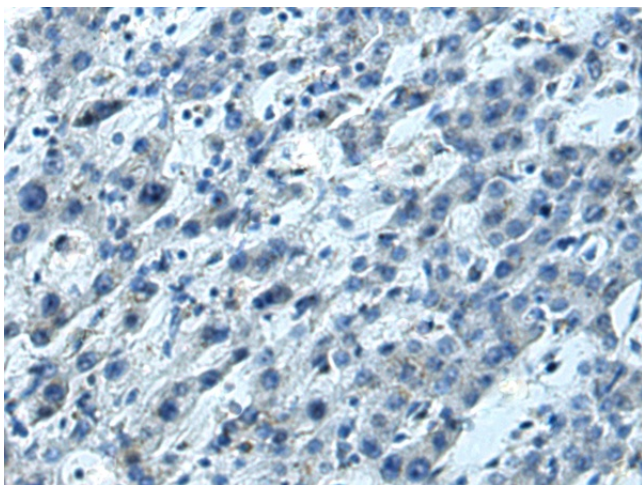
### Product images:



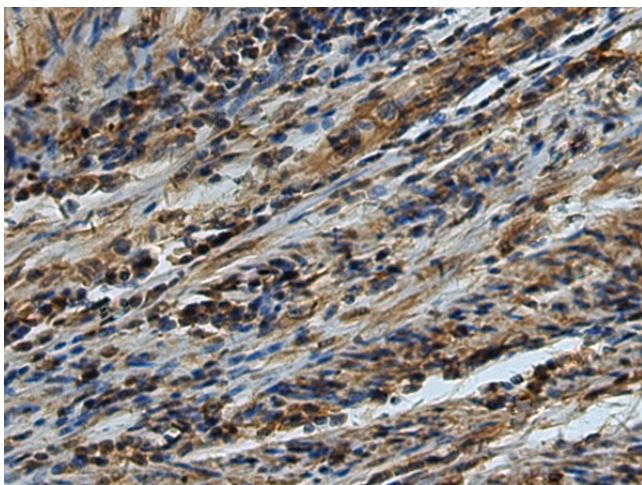
Gel: 8%SDS-PAGE  
Lysate: 40  $\mu$ g  
Lane: Human pancreas tissue lysate  
Primary antibody: TA349919 (EDIL3 Antibody) at dilution 1/700  
Secondary antibody: Goat anti rabbit IgG at 1/5000 dilution  
Exposure time: 1 minute



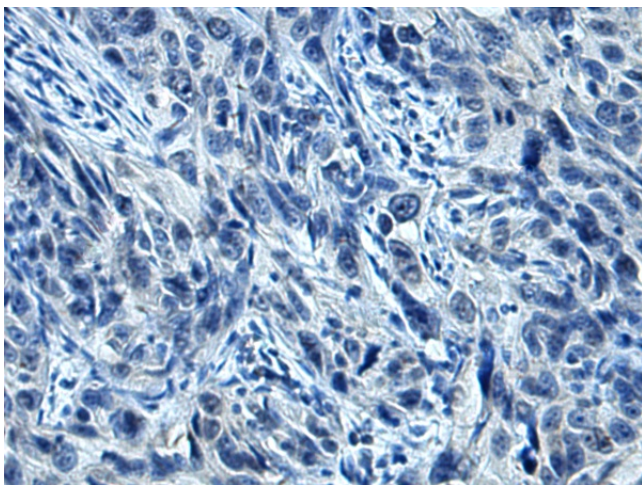
Immunohistochemistry of paraffin-embedded Human liver cancer tissue using TA349919 (EDIL3 Antibody) at dilution 1/85 (Original magnification:  $\times$ 200)



Immunohistochemistry of paraffin-embedded Human liver cancer tissue using TA349919 (EDIL3 Antibody) at dilution 1/85, treated with fusion protein. (Original magnification: x200)



Immunohistochemistry of paraffin-embedded Human esophagus cancer tissue using TA349919 (EDIL3 Antibody) at dilution 1/85 (Original magnification: x200)



Immunohistochemistry of paraffin-embedded Human esophagus cancer tissue using TA349919 (EDIL3 Antibody) at dilution 1/85, treated with fusion protein. (Original magnification: x200)