

Product datasheet for **TA349915S**

ECHS1 Rabbit Polyclonal Antibody

Product data:

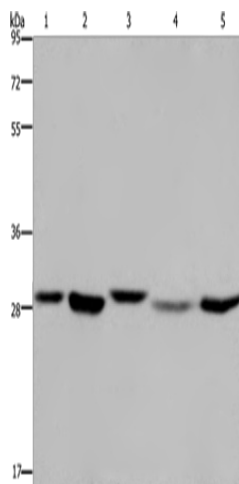
Product Type:	Primary Antibodies
Applications:	IHC, WB
Recommended Dilution:	WB: 500-2000 WB positive control: 293T, MCF-7 and PC3 cells, human fetal liver tissue and Hela cells IHC: 25-100 Positive control: Human esophagus cancer Predicted cell location: Cytoplasm
Reactivity:	Human, Mouse, Rat
Host:	Rabbit
Isotype:	IgG
Clonality:	Polyclonal
Immunogen:	Fusion protein of human ECHS1
Formulation:	pH7.4 PBS, 0.05% NaN ₃ , 40% Glycerol
Purification:	Antigen affinity purification
Conjugation:	Unconjugated
Storage:	Store at -20°C as received.
Stability:	Stable for 12 months from date of receipt.
Predicted Protein Size:	31 kDa
Gene Name:	enoyl-CoA hydratase, short chain, 1, mitochondrial
Database Link:	NP_004083 Entrez Gene 93747 Mouse Entrez Gene 140547 Rat Entrez Gene 1892 Human P30084
Background:	The protein encoded by this gene functions in the second step of the mitochondrial fatty acid beta-oxidation pathway. It catalyzes the hydration of 2-trans-enoyl-coenzyme A (CoA) intermediates to L-3-hydroxyacyl-CoAs. The gene product is a member of the hydratase/isomerase superfamily. It localizes to the mitochondrial matrix. Transcript variants utilizing alternative transcription initiation sites have been described in the literature.
Synonyms:	SCEH



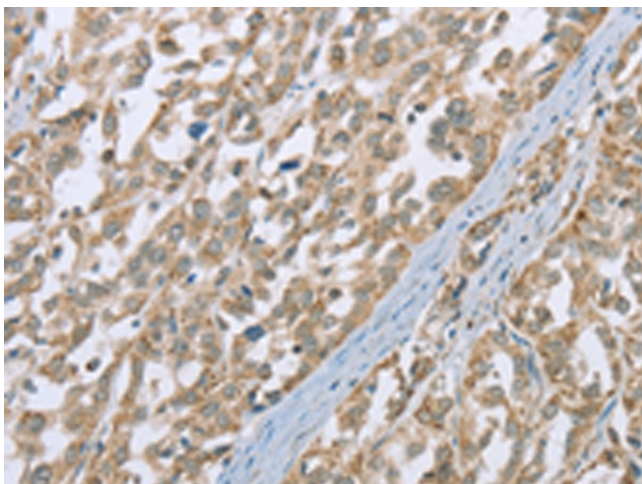
[View online »](#)

Protein Pathways:

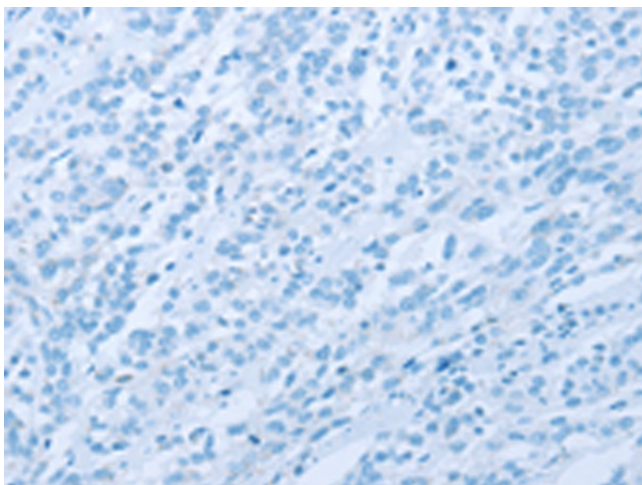
beta-Alanine metabolism, Butanoate metabolism, Fatty acid elongation in mitochondria, Fatty acid metabolism, Limonene and pinene degradation, Lysine degradation, Metabolic pathways, Propanoate metabolism, Tryptophan metabolism, Valine, leucine and isoleucine degradation

Product images:


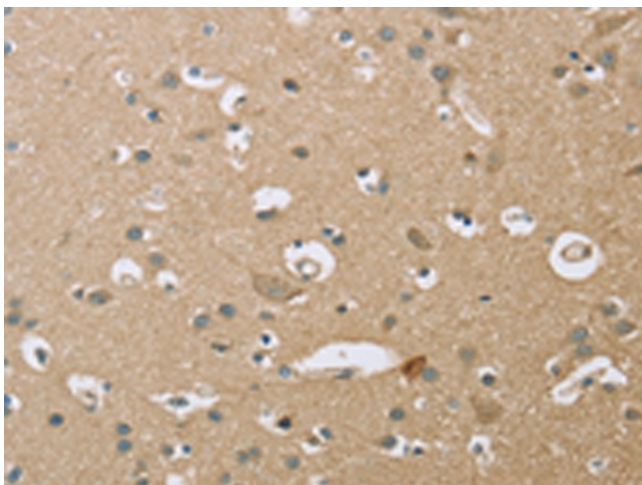
Gel: 8%SDS-PAGE
 Lysate: 40 µg
 Lane 1-5: 293T cells
 MCF7 cells
 PC3 cells
 human fetal liver tissue
 HeLa cells
 Primary antibody: [TA349915] (ECHS1 Antibody) at dilution 1/300
 Secondary antibody: Goat anti rabbit IgG at 1/8000 dilution
 Exposure time: 20 seconds



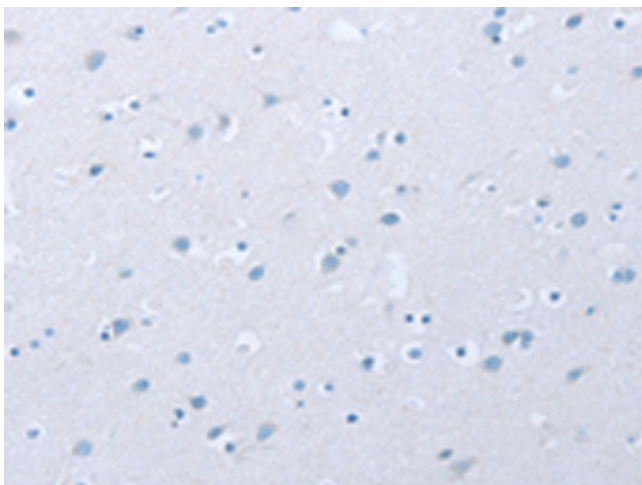
Immunohistochemistry of paraffin-embedded Human esophagus cancer tissue using [TA349915] (ECHS1 Antibody) at dilution 1/35 (Original magnification: ×200)



Immunohistochemistry of paraffin-embedded Human esophagus cancer tissue using [TA349915] (ECHS1 Antibody) at dilution 1/35, treated with fusion protein. (Original magnification: ×200)



Immunohistochemistry of paraffin-embedded Human brain tissue using [TA349915] (ECHS1 Antibody) at dilution 1/35 (Original magnification: ×200)



Immunohistochemistry of paraffin-embedded Human brain tissue using [TA349915] (ECHS1 Antibody) at dilution 1/35, treated with fusion protein. (Original magnification: ×200)