

## Product datasheet for **TA349915**

### **ECHS1 Rabbit Polyclonal Antibody**

#### **Product data:**

|                                |  |
|--------------------------------|--|
| <b>Product Type:</b>           | Primary Antibodies   |
| <b>Applications:</b>           | IHC, WB  |
| <b>Recommended Dilution:</b>   | WB: 500-2000<br>WB positive control: 293T, MCF-7 and PC3 cells, human fetal liver tissue and Hela cells<br>IHC: 25-100<br>Positive control: Human esophagus cancer<br>Predicted cell location: Cytoplasm   |
| <b>Reactivity:</b>             | Human, Mouse, Rat  |
| <b>Host:</b>                   | Rabbit   |
| <b>Isotype:</b>                | IgG  |
| <b>Clonality:</b>              | Polyclonal   |
| <b>Immunogen:</b>              | Fusion protein of human ECHS1  |
| <b>Formulation:</b>            | pH7.4 PBS, 0.05% NaN <sub>3</sub> , 40% Glycerol   |
| <b>Concentration:</b>          | lot specific   |
| <b>Purification:</b>           | Antigen affinity purification  |
| <b>Conjugation:</b>            | Unconjugated   |
| <b>Storage:</b>                | Store at -20°C as received.  |
| <b>Stability:</b>              | Stable for 12 months from date of receipt.   |
| <b>Predicted Protein Size:</b> | 31 kDa   |
| <b>Gene Name:</b>              | enoyl-CoA hydratase, short chain, 1, mitochondrial   |
| <b>Database Link:</b>          | <a href="#">NP_004083</a><br><a href="#">Entrez Gene 93747 Mouse</a> <a href="#">Entrez Gene 140547 Rat</a> <a href="#">Entrez Gene 1892 Human</a><br><a href="#">P30084</a>   |
| <b>Background:</b>             | The protein encoded by this gene functions in the second step of the mitochondrial fatty acid beta-oxidation pathway. It catalyzes the hydration of 2-trans-enoyl-coenzyme A (CoA) intermediates to L-3-hydroxyacyl-CoAs. The gene product is a member of the hydratase/isomerase superfamily. It localizes to the mitochondrial matrix. Transcript variants utilizing alternative transcription initiation sites have been described in the literature. |

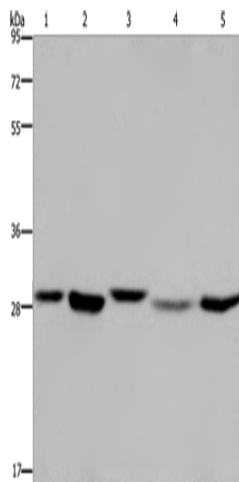


[View online »](#)

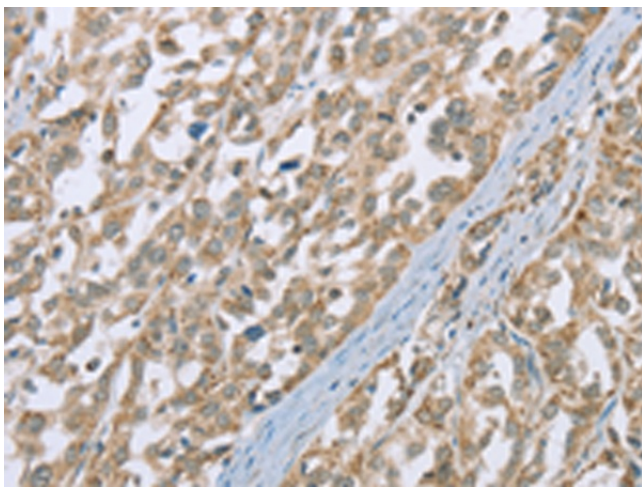
**Synonyms:** SCEH

**Protein Pathways:** beta-Alanine metabolism, Butanoate metabolism, Fatty acid elongation in mitochondria, Fatty acid metabolism, Limonene and pinene degradation, Lysine degradation, Metabolic pathways, Propanoate metabolism, Tryptophan metabolism, Valine, leucine and isoleucine degradation

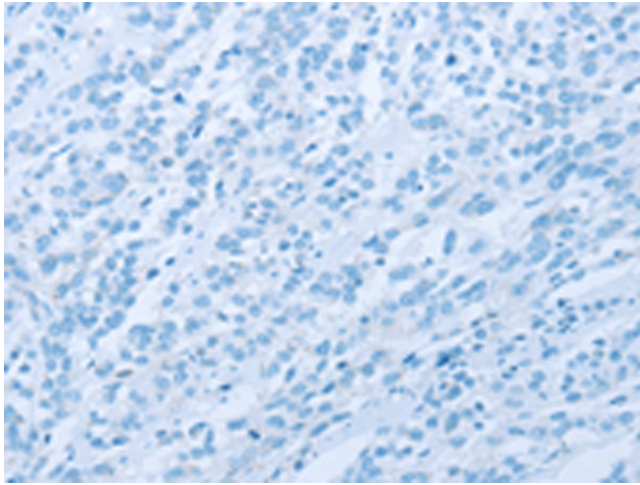
**Product images:**



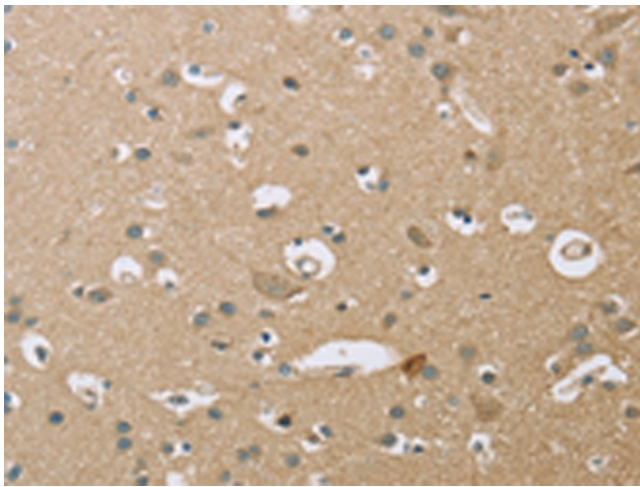
Gel: 8%SDS-PAGE  
Lysate: 40  $\mu$ g  
Lane 1-5: 293T cells  
MCF7 cells  
PC3 cells  
human fetal liver tissue  
Hela cells  
Primary antibody: TA349915 (ECHS1 Antibody) at dilution 1/300  
Secondary antibody: Goat anti rabbit IgG at 1/8000 dilution  
Exposure time: 20 seconds



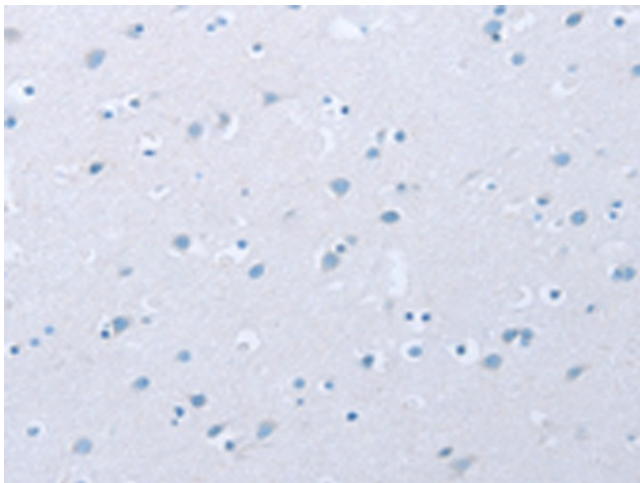
Immunohistochemistry of paraffin-embedded Human esophagus cancer tissue using TA349915 (ECHS1 Antibody) at dilution 1/35 (Original magnification:  $\times$ 200)



Immunohistochemistry of paraffin-embedded Human esophagus cancer tissue using TA349915 (ECHS1 Antibody) at dilution 1/35, treated with fusion protein. (Original magnification: ×200)



Immunohistochemistry of paraffin-embedded Human brain tissue using TA349915 (ECHS1 Antibody) at dilution 1/35 (Original magnification: ×200)



Immunohistochemistry of paraffin-embedded Human brain tissue using TA349915 (ECHS1 Antibody) at dilution 1/35, treated with fusion protein. (Original magnification: ×200)