

Product datasheet for **TA349914**

ECE2 (EEF1AKMT4) Rabbit Polyclonal Antibody

Product data:

Product Type:	Primary Antibodies
Applications:	IHC, WB
Recommended Dilution:	WB: 500-2000 WB positive control: A172 cells and Mouse liver tissue IHC: 30-150 Positive control: Human ovarian cancer Predicted cell location: Cytoplasm and Nucleus
Reactivity:	Human, Mouse
Host:	Rabbit
Isotype:	IgG
Clonality:	Polyclonal
Immunogen:	Fusion protein of human ECE2
Formulation:	pH7.4 PBS, 0.05% NaN ₃ , 40% Glycerol
Concentration:	lot specific
Purification:	Antigen affinity purification
Conjugation:	Unconjugated
Storage:	Store at -20°C as received.
Stability:	Stable for 12 months from date of receipt.
Predicted Protein Size:	100 kDa
Gene Name:	endothelin converting enzyme 2
Database Link:	NP_115707 Entrez Gene 110599564 Entrez Gene 9718 Human P0DPD6



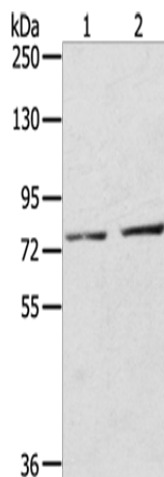
[View online »](#)

Background:

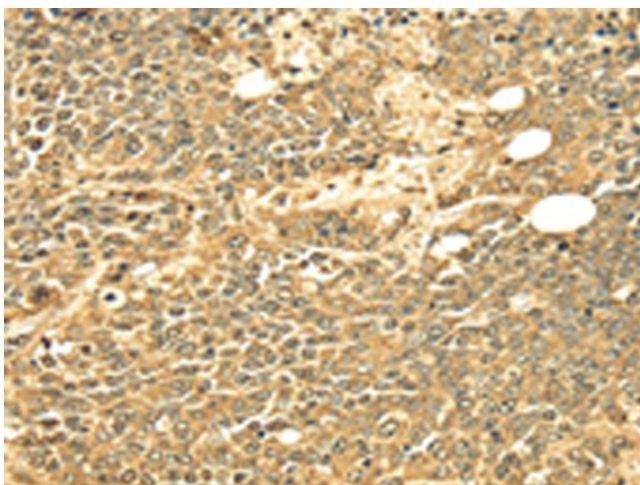
This gene encodes a member of the M13 family, which includes type 2 integral membrane metalloproteinases. The encoded enzyme is a membrane-bound zinc-dependent metalloprotease. The enzyme catalyzes the cleavage of big endothelin to produce the vasoconstrictor endothelin-1, and plays a role in the processing of several neuroendocrine peptides. It may also have methyltransferase activity. Alternative splicing results in multiple transcript variants.

Synonyms:

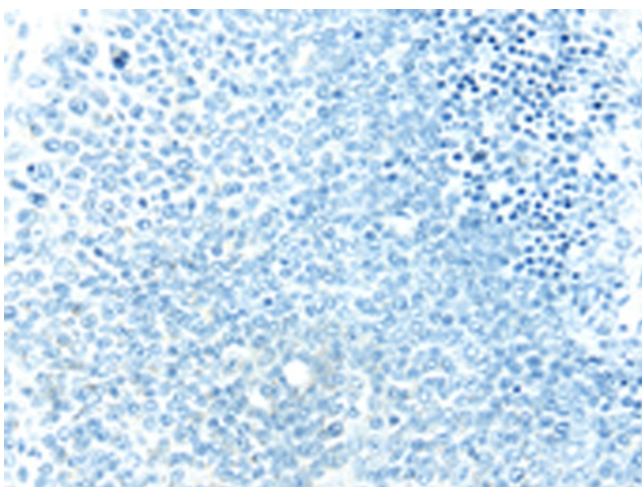
KIAA0604; MGC2408; MGC17664; MGC78487

Product images:

Gel: 6%SDS-PAGE
Lysate: 40 μ g
Lane 1-2: A172 cells
Mouse liver tissue
Primary antibody: TA349914 (EEF1AKMT4 Antibody) at dilution 1/350
Secondary antibody: Goat anti rabbit IgG at 1/8000 dilution
Exposure time: 20 seconds



Immunohistochemistry of paraffin-embedded Human ovarian cancer tissue using TA349914 (EEF1AKMT4 Antibody) at dilution 1/25 (Original magnification: \times 200)



Immunohistochemistry of paraffin-embedded Human ovarian cancer tissue using TA349914 (EEF1AKMT4 Antibody) at dilution 1/25, treated with fusion protein. (Original magnification: $\times 200$)