

## Product datasheet for **TA349913**

### ECE1 Rabbit Polyclonal Antibody

#### Product data:

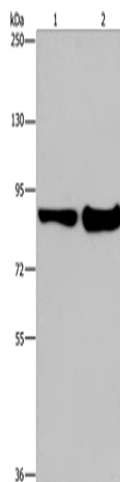
Product Type:	Primary Antibodies
Applications:	IHC, WB
Recommended Dilution:	WB: 1000-5000 WB positive control: Mouse lung and liver tissue IHC: 50-200 Positive control: Human brain Predicted cell location: Cytoplasm
Reactivity:	Human, Mouse
Host:	Rabbit
Isotype:	IgG
Clonality:	Polyclonal
Immunogen:	Fusion protein of human ECE1
Formulation:	pH7.4 PBS, 0.05% NaN <sub>3</sub> , 40% Glycerol
Concentration:	lot specific
Purification:	Antigen affinity purification
Conjugation:	Unconjugated
Storage:	Store at -20°C as received.
Stability:	Stable for 12 months from date of receipt.
Predicted Protein Size:	87 kDa
Gene Name:	endothelin converting enzyme 1
Database Link:	<a href="#">NP_001388</a> <a href="#">Entrez Gene 230857 Mouse</a> <a href="#">Entrez Gene 1889 Human</a> <a href="#">P42892</a>
Background:	The protein encoded by this gene is involved in proteolytic processing of endothelin precursors to biologically active peptides. Mutations in this gene are associated with Hirschsprung disease, cardiac defects and autonomic dysfunction. Alternatively spliced transcript variants encoding different isoforms have been noted for this gene.
Synonyms:	ECE



[View online »](#)

Protein Families: Druggable Genome, Protease, Transmembrane

### Product images:



Gel: 6%SDS-PAGE

Lysate: 40 µg

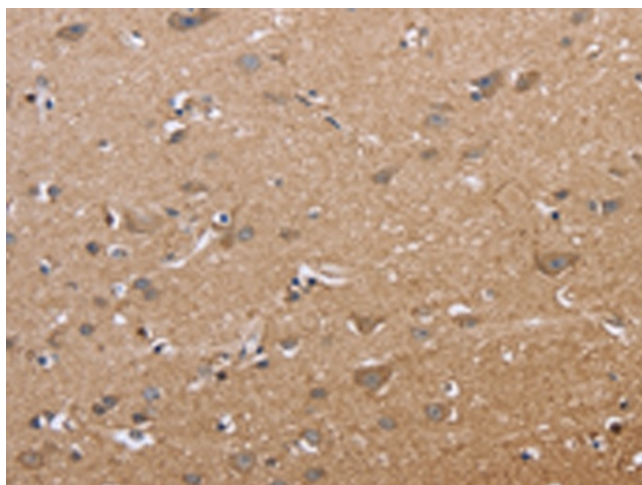
Lane 1-2: Mouse lung tissue

Mouse liver tissue

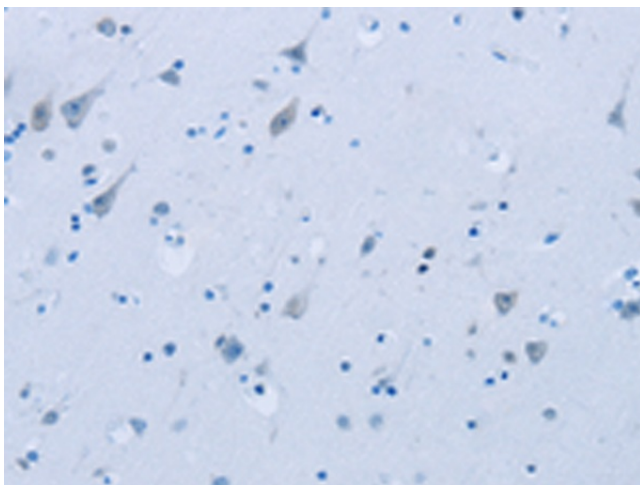
Primary antibody: TA349913 (ECE1 Antibody) at dilution 1/1050

Secondary antibody: Goat anti rabbit IgG at 1/8000 dilution

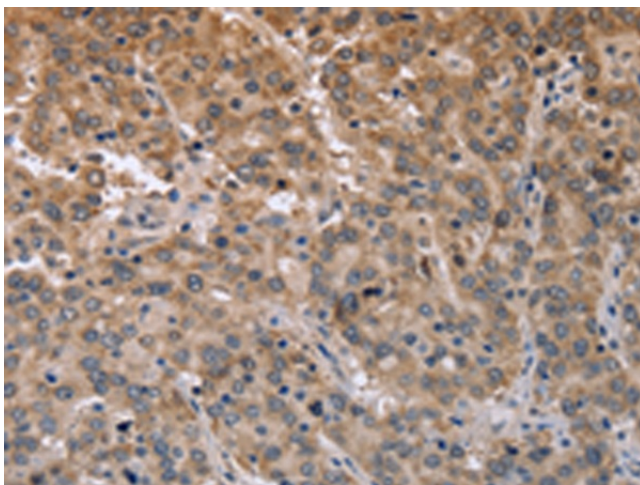
Exposure time: 10 seconds



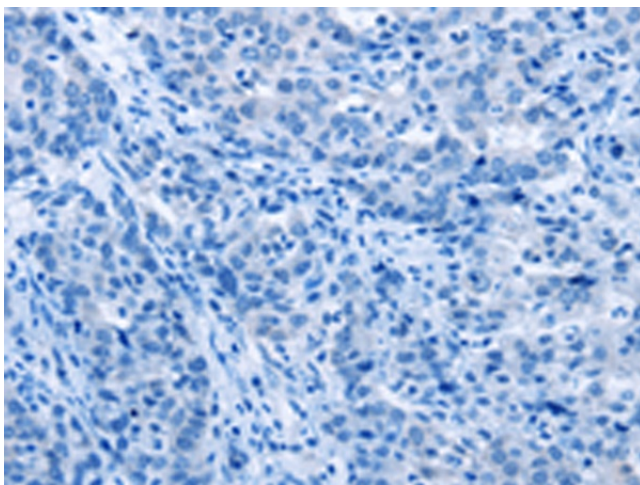
Immunohistochemistry of paraffin-embedded Human brain tissue using TA349913 (ECE1 Antibody) at dilution 1/50 (Original magnification: ×200)



Immunohistochemistry of paraffin-embedded Human brain tissue using TA349913 (ECE1 Antibody) at dilution 1/50, treated with fusion protein. (Original magnification: x200)



Immunohistochemistry of paraffin-embedded Human liver cancer tissue using TA349913 (ECE1 Antibody) at dilution 1/50 (Original magnification: x200)



Immunohistochemistry of paraffin-embedded Human liver cancer tissue using TA349913 (ECE1 Antibody) at dilution 1/50, treated with fusion protein. (Original magnification: x200)