

Product datasheet for **TA349912**

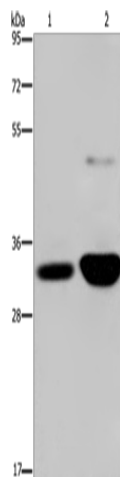
EB3 (MAPRE3) Rabbit Polyclonal Antibody

Product data:

Product Type:	Primary Antibodies
Applications:	IHC, WB
Recommended Dilution:	WB: 500-2000 WB positive control: Human fetal brain and mouse brain tissue IHC: 25-100 Positive control: Human thyroid cancer Predicted cell location: Cytoplasm
Reactivity:	Human, Mouse, Rat
Host:	Rabbit
Isotype:	IgG
Clonality:	Polyclonal
Immunogen:	Fusion protein of human MAPRE3
Formulation:	pH7.4 PBS, 0.05% NaN ₃ , 40% Glycerol
Concentration:	lot specific
Purification:	Antigen affinity purification
Conjugation:	Unconjugated
Storage:	Store at -20°C as received.
Stability:	Stable for 12 months from date of receipt.
Predicted Protein Size:	32 kDa
Gene Name:	microtubule associated protein RP/EB family member 3
Database Link:	NP_036458 Entrez Gene 100732 Mouse Entrez Gene 22924 Human Q9UPY8
Background:	The protein encoded by this gene is a member of the RP/EB family of genes. The protein localizes to the cytoplasmic microtubule network and binds APCL, a homolog of the adenomatous polyposis coli tumor suppressor gene.
Synonyms:	EB3; EBF3; EBF3-S; RP3



[View online »](#)

Product images:

Gel: 8%SDS-PAGE

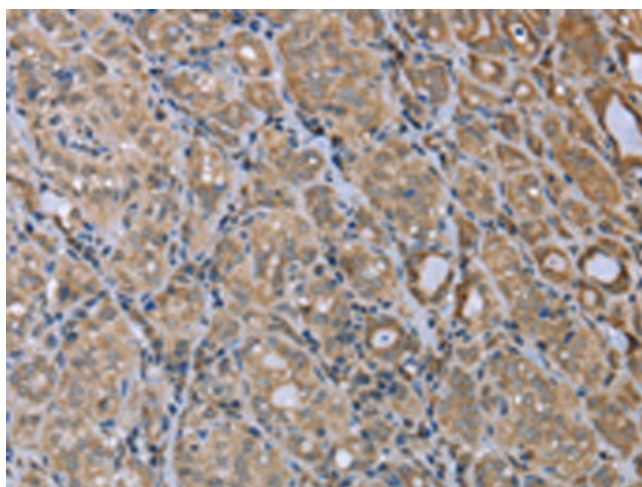
Lysate: 40 μ g

Lane 1-2: Human fetal brain tissue
mouse brain tissue

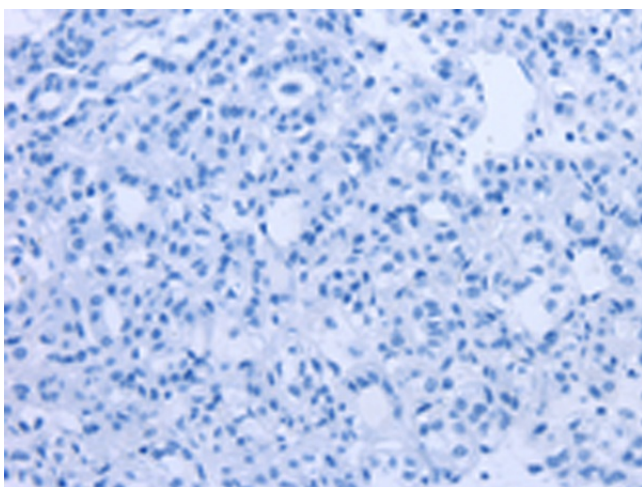
Primary antibody: TA349912 (MAPRE3 Antibody)
at dilution 1/500

Secondary antibody: Goat anti rabbit IgG at
1/8000 dilution

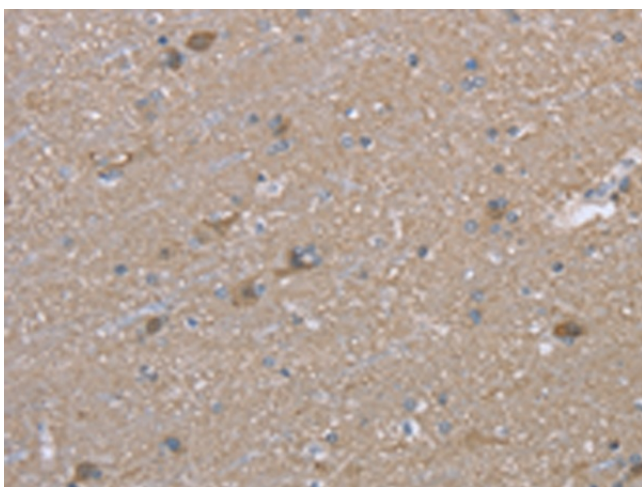
Exposure time: 30 seconds



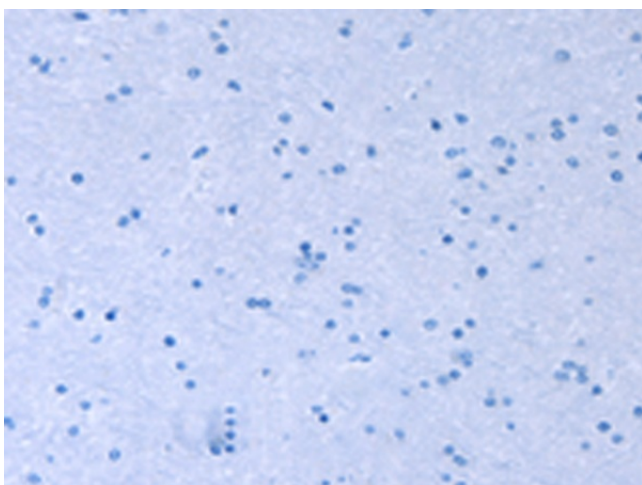
Immunohistochemistry of paraffin-embedded
Human thyroid cancer tissue using TA349912
(MAPRE3 Antibody) at dilution 1/20 (Original
magnification: \times 200)



Immunohistochemistry of paraffin-embedded Human thyroid cancer tissue using TA349912 (MAPRE3 Antibody) at dilution 1/20, treated with fusion protein. (Original magnification: $\times 200$)



Immunohistochemistry of paraffin-embedded Human brain tissue using TA349912 (MAPRE3 Antibody) at dilution 1/20 (Original magnification: $\times 200$)



Immunohistochemistry of paraffin-embedded Human brain tissue using TA349912 (MAPRE3 Antibody) at dilution 1/20, treated with fusion protein. (Original magnification: $\times 200$)