

## Product datasheet for **TA349911S**

### UBE2S Rabbit Polyclonal Antibody

#### Product data:

Product Type:	Primary Antibodies
Applications:	IHC, WB
Recommended Dilution:	WB: 200-1000 WB positive control: Human testis tissue IHC: 50-200 Positive control: Human thyroid cancer Predicted cell location: Cytoplasm and Nucleus
Reactivity:	Human, Mouse, Rat
Host:	Rabbit
Isotype:	IgG
Clonality:	Polyclonal
Immunogen:	Fusion protein of human UBE2S
Formulation:	pH7.4 PBS, 0.05% NaN <sub>3</sub> , 40% Glycerol
Purification:	Antigen affinity purification
Conjugation:	Unconjugated
Storage:	Store at -20°C as received.
Stability:	Stable for 12 months from date of receipt.
Predicted Protein Size:	24 kDa
Gene Name:	ubiquitin conjugating enzyme E2 S
Database Link:	<a href="#">NP_055316</a> <a href="#">Entrez Gene 77891 MouseEntrez Gene 292588 RatEntrez Gene 27338 Human Q16763</a>
Background:	This gene encodes a member of the ubiquitin-conjugating enzyme family. The encoded protein is able to form a thiol ester linkage with ubiquitin in a ubiquitin activating enzyme-dependent manner, a characteristic property of ubiquitin carrier proteins.
Synonyms:	E2-EPF; E2EPF; EPF5
Protein Families:	Druggable Genome



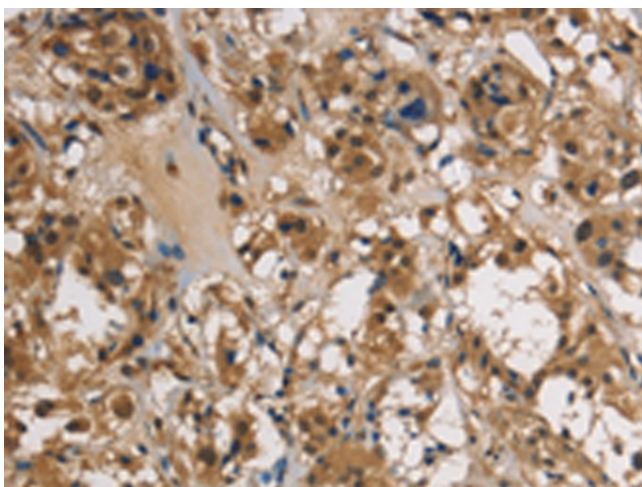
[View online »](#)

Protein Pathways: Ubiquitin mediated proteolysis

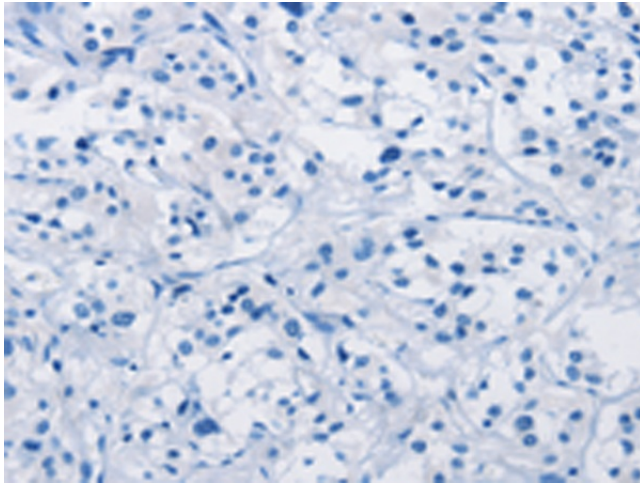
**Product images:**



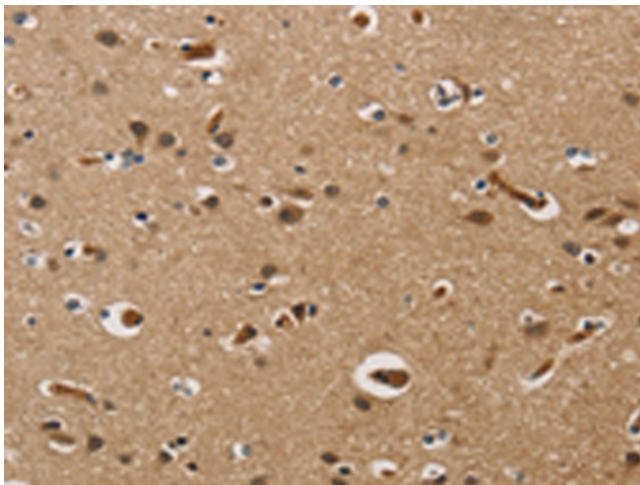
Gel: 8%SDS-PAGE  
Lysate: 40 µg  
Lane: Human testis tissue  
Primary antibody: [TA349911] (UBE2S Antibody) at dilution 1/300  
Secondary antibody: Goat anti rabbit IgG at 1/8000 dilution  
Exposure time: 2 minutes



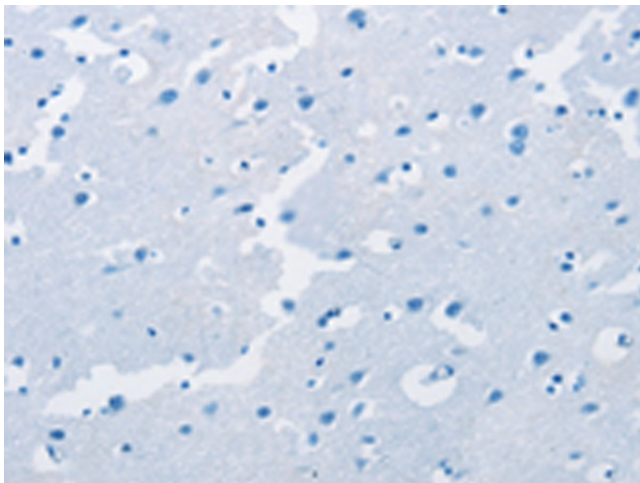
Immunohistochemistry of paraffin-embedded Human thyroid cancer tissue using [TA349911] (UBE2S Antibody) at dilution 1/40 (Original magnification: ×200)



Immunohistochemistry of paraffin-embedded Human thyroid cancer tissue using [TA349911] (UBE2S Antibody) at dilution 1/40, treated with fusion protein. (Original magnification: ×200)



Immunohistochemistry of paraffin-embedded Human brain tissue using [TA349911] (UBE2S Antibody) at dilution 1/40 (Original magnification: ×200)



Immunohistochemistry of paraffin-embedded Human brain tissue using [TA349911] (UBE2S Antibody) at dilution 1/40, treated with fusion protein. (Original magnification: ×200)