

## Product datasheet for **TA349904**

### DRG1 Rabbit Polyclonal Antibody

#### Product data:

Product Type:	Primary Antibodies
Applications:	IHC, WB
Recommended Dilution:	WB: 500-2000 WB positive control: Human fetal liver and brain tissue, 293T and Hela cells IHC: 50-200 Positive control: Human thyroid cancer Predicted cell location: Cytoplasm
Reactivity:	Human, Mouse
Host:	Rabbit
Isotype:	IgG
Clonality:	Polyclonal
Immunogen:	Fusion protein of human DRG1
Formulation:	pH7.4 PBS, 0.05% NaN <sub>3</sub> , 40% Glycerol
Concentration:	lot specific
Purification:	Antigen affinity purification
Conjugation:	Unconjugated
Storage:	Store at -20°C as received.
Stability:	Stable for 12 months from date of receipt.
Predicted Protein Size:	41 kDa
Gene Name:	developmentally regulated GTP binding protein 1
Database Link:	<a href="#">NP_004138</a> <a href="#">Entrez Gene 13494 Mouse</a> <a href="#">Entrez Gene 4733 Human</a> <a href="#">Q9Y295</a>



[View online »](#)

**Background:**

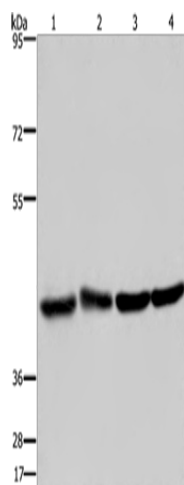
DRG1 (developmentally regulated GTP binding protein 1), also known as NEDD3 (neural precursor cell expressed developmentally down-regulated protein 3), is a 367 amino acid protein that localizes to the cytoplasm and belongs to the GTP1/OBG family. Expressed at high levels in heart, kidney and skeletal muscle and at lower levels in brain, liver, placenta, lung, colon and spleen, DRG1 binds to TAL1 and TAL2 and is thought to play a role in cell proliferation and differentiation, as well as in apoptosis, suggesting a role in tumor formation and metastasis. DRG1 is subject to polyubiquitination and sumoylation, the former of which induces proteolytic degradation. The gene encoding DRG1 maps to human chromosome 22, which houses over 500 genes and is the second smallest human chromosome. Mutations in several of the genes that map to chromosome 22 are involved in the development of Phelan-McDermid syndrome, Neurofibromatosis type 2, autism and schizophrenia.

**Synonyms:**

NEDD3

**Protein Families:**

Transcription Factors

**Product images:**

Gel: 6%SDS-PAGE

Lysate: 40 µg

Lane 1-4: Human fetal liver tissue

Human brain tissue

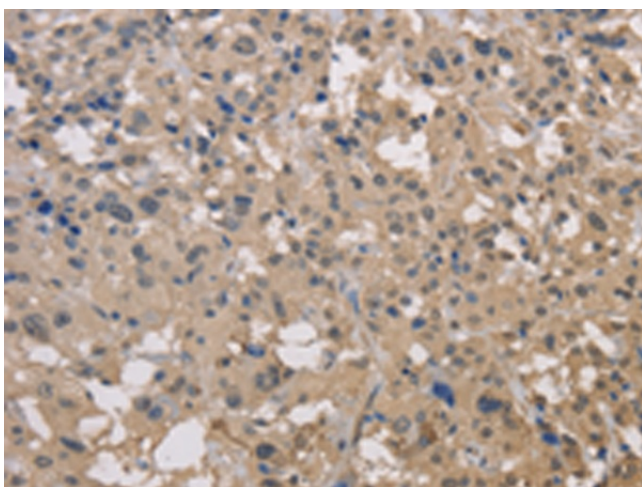
293T cells

HeLa cells

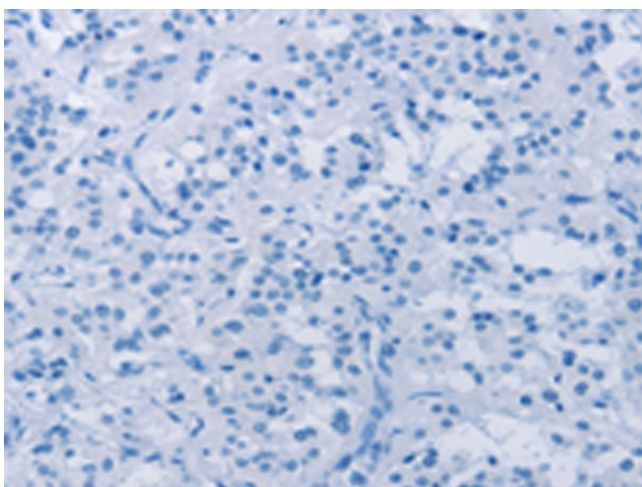
Primary antibody: TA349904 (DRG1 Antibody) at dilution 1/350

Secondary antibody: Goat anti rabbit IgG at 1/8000 dilution

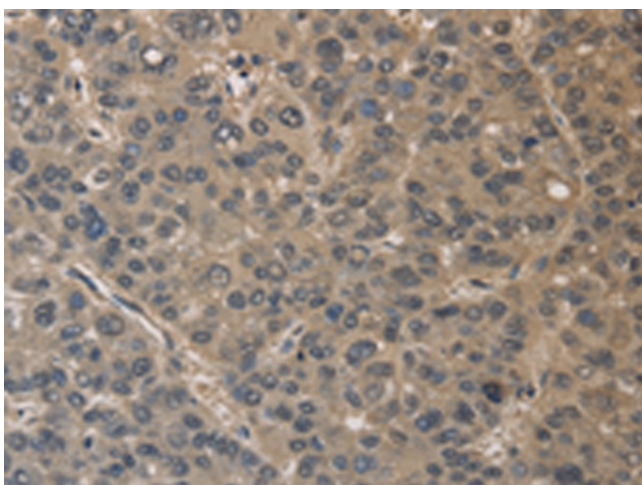
Exposure time: 20 seconds



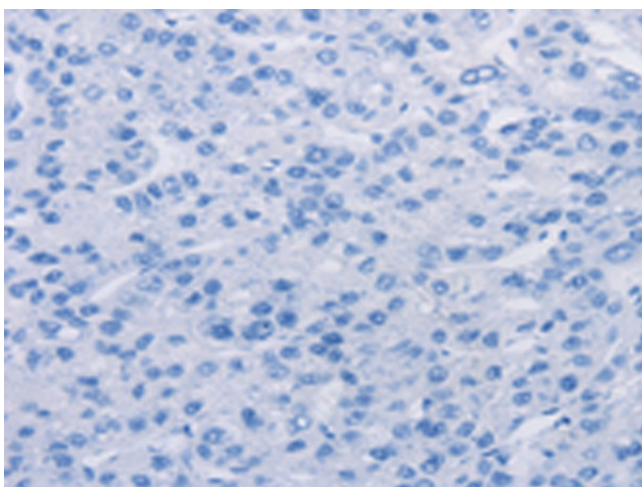
Immunohistochemistry of paraffin-embedded Human thyroid cancer tissue using TA349904 (DRG1 Antibody) at dilution 1/30 (Original magnification: x200)



Immunohistochemistry of paraffin-embedded Human thyroid cancer tissue using TA349904 (DRG1 Antibody) at dilution 1/30, treated with fusion protein. (Original magnification: x200)



Immunohistochemistry of paraffin-embedded Human liver cancer tissue using TA349904 (DRG1 Antibody) at dilution 1/30 (Original magnification: x200)



Immunohistochemistry of paraffin-embedded Human liver cancer tissue using TA349904 (DRG1 Antibody) at dilution 1/30, treated with fusion protein. (Original magnification:  $\times 200$ )