

Product datasheet for **TA349899**

DNase gamma (DNASE1L3) Rabbit Polyclonal Antibody

Product data:

Product Type:	Primary Antibodies
Applications:	WB
Recommended Dilution:	WB: 500-2000 WB positive control: HT-29 cells and human placenta tissue
Reactivity:	Human, Mouse, Rat
Host:	Rabbit
Isotype:	IgG
Clonality:	Polyclonal
Immunogen:	Fusion protein of human DNASE1L3
Formulation:	pH7.4 PBS, 0.05% NaN ₃ , 40% Glycerol
Concentration:	lot specific
Purification:	Antigen affinity purification
Conjugation:	Unconjugated
Storage:	Store at -20°C as received.
Stability:	Stable for 12 months from date of receipt.
Predicted Protein Size:	36 kDa
Gene Name:	deoxyribonuclease I like 3
Database Link:	NP_004935 Entrez Gene 13421 Mouse Entrez Gene 1776 Human Q13609

Background: This gene encodes a member of the deoxyribonuclease I family. The encoded protein hydrolyzes DNA, is not inhibited by actin, and mediates the breakdown of DNA during apoptosis. Mutations in this gene are a cause of systemic lupus erythematosus-16. Alternatively spliced transcript variants encoding multiple isoforms have been observed for this gene.

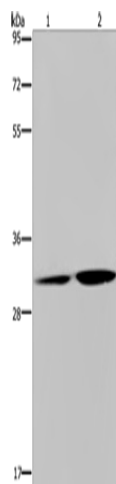
Synonyms: DHP2; DNAS1L3; LSD; SLEB16

Protein Families: Druggable Genome



[View online »](#)

Product images:



Gel: 8%SDS-PAGE
Lysate: 40 µg
Lane 1-2: HT29 cells
human placenta tissue
Primary antibody: TA349899 (DNASE1L3
Antibody) at dilution 1/450
Secondary antibody: Goat anti rabbit IgG at
1/8000 dilution
Exposure time: 30 seconds