

## Product datasheet for **TA349887S**

### Desmoglein 2 (DSG2) Rabbit Polyclonal Antibody

#### Product data:

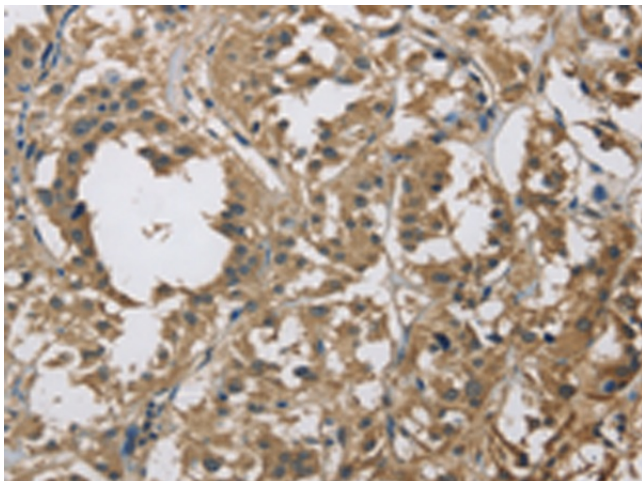
|                       |  |
|-----------------------|--|
| Product Type:         | Primary Antibodies   |
| Applications:         | IHC  |
| Recommended Dilution: | IHC: 100-300<br>Positive control: Human thyroid cancer<br>Predicted cell location: Cytoplasm   |
| Reactivity:           | Human  |
| Host:                 | Rabbit   |
| Isotype:              | IgG  |
| Clonality:            | Polyclonal   |
| Immunogen:            | Fusion protein of human DSG2   |
| Formulation:          | pH7.4 PBS, 0.05% NaN <sub>3</sub> , 40% Glycerol   |
| Purification:         | Antigen affinity purification  |
| Conjugation:          | Unconjugated   |
| Storage:              | Store at -20°C as received.  |
| Stability:            | Stable for 12 months from date of receipt.   |
| Gene Name:            | desmoglein 2   |
| Database Link:        | <a href="#">NP_001934</a><br><a href="#">Entrez Gene 1829 Human</a><br><a href="#">Q14126</a>  |
| Background:           | Desmosomes are cell-cell junctions between epithelial, myocardial, and certain other cell types. This gene product is a calcium-binding transmembrane glycoprotein component of desmosomes in vertebrate epithelial cells. Currently, three desmoglein subfamily members have been identified and all are members of the cadherin cell adhesion molecule superfamily. These desmoglein gene family members are located in a cluster on chromosome 18. This second family member is expressed in colon, colon carcinoma, and other simple and stratified epithelial-derived cell lines. |
| Synonyms:             | CDHF5; HDGC  |
| Protein Families:     | Transmembrane  |



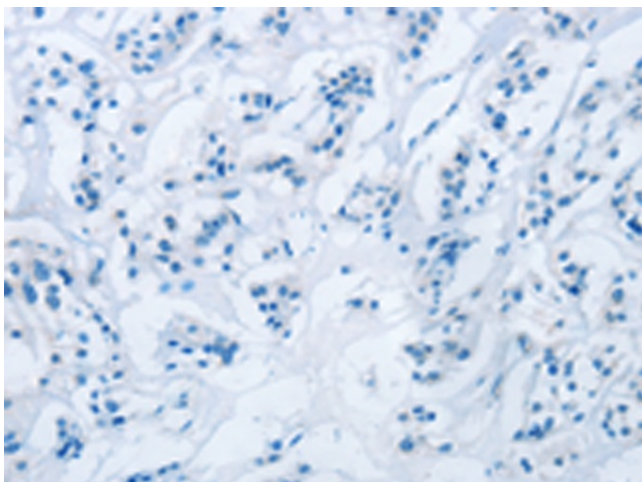
[View online »](#)

Protein Pathways: Arrhythmogenic right ventricular cardiomyopathy (ARVC)

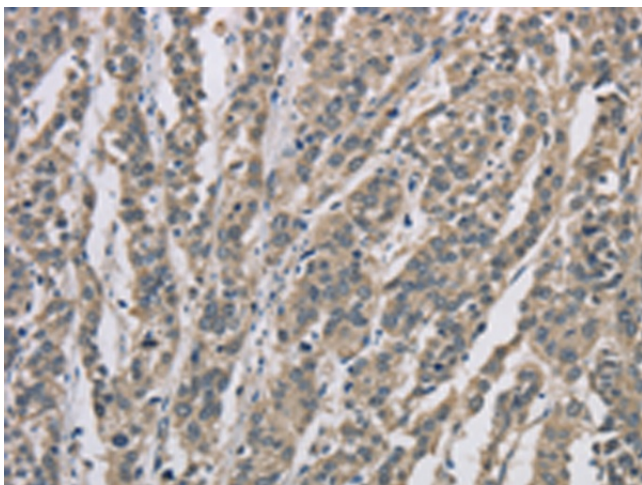
**Product images:**



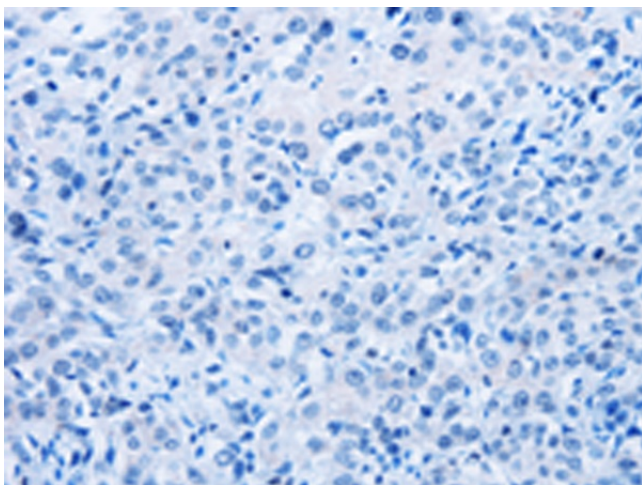
Immunohistochemistry of paraffin-embedded Human thyroid cancer tissue using [TA349887] (DSG2 Antibody) at dilution 1/70 (Original magnification:  $\times 200$ )



Immunohistochemistry of paraffin-embedded Human thyroid cancer tissue using [TA349887] (DSG2 Antibody) at dilution 1/70, treated with fusion protein. (Original magnification:  $\times 200$ )



Immunohistochemistry of paraffin-embedded Human esophagus cancer tissue using [TA349887] (DSG2 Antibody) at dilution 1/70 (Original magnification:  $\times 200$ )



Immunohistochemistry of paraffin-embedded Human esophagus cancer tissue using [TA349887] (DSG2 Antibody) at dilution 1/70, treated with fusion protein. (Original magnification:  $\times 200$ )