

Product datasheet for **TA349886**

DEPDC1 Rabbit Polyclonal Antibody

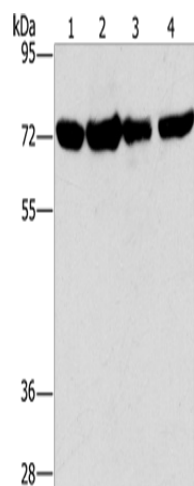
Product data:

Product Type:	Primary Antibodies
Applications:	WB
Recommended Dilution:	WB: 200-1000 WB positive control: A172, hela, hepg2 and 293T cells
Reactivity:	Human
Host:	Rabbit
Isotype:	IgG
Clonality:	Polyclonal
Immunogen:	Fusion protein of human DEPDC1
Formulation:	pH7.4 PBS, 0.05% NaN ₃ , 40% Glycerol
Concentration:	lot specific
Purification:	Antigen affinity purification
Conjugation:	Unconjugated
Storage:	Store at -20°C as received.
Stability:	Stable for 12 months from date of receipt.
Predicted Protein Size:	93 kDa
Gene Name:	DEP domain containing 1
Database Link:	NP_060249 Entrez Gene 55635 Human Q5TB30
Background:	DEP domain containing 1 is a protein in humans that is encoded by the DEPDC1 gene. May be involved in transcriptional regulation as a transcriptional corepressor. The DEPDC1A-ZNF224 complex may play a critical role in bladder carcinogenesis by repressing the transcription of the A20 gene, leading to transport of NF-KB protein into the nucleus, resulting in suppression of apoptosis of bladder cancer cells.
Synonyms:	DEP.8; DEPDC1-V2; DEPDC1A; SDP35



[View online »](#)

Product images:



Gel: 6%SDS-PAGE
 Lysate: 40 µg
 Lane 1-4: A172 cells
 hela cells
 hepg2 cells
 293T cells
 Primary antibody: TA349886 (DEPDC1 Antibody)
 at dilution 1/150
 Secondary antibody: Goat anti rabbit IgG at
 1/8000 dilution
 Exposure time: 1 minute