

Product datasheet for **TA349869**

Dopamine beta Hydroxylase (DBH) Rabbit Polyclonal Antibody

Product data:

Product Type:	Primary Antibodies
Applications:	IHC, WB
Recommended Dilution:	WB: 200-1000 WB positive control: Mouse brain tissue, A172 and Hela cells IHC: 100-300 Positive control: Human thyroid cancer Predicted cell location: Cytoplasm
Reactivity:	Human, Mouse
Host:	Rabbit
Isotype:	IgG
Clonality:	Polyclonal
Immunogen:	Fusion protein of human DBH
Formulation:	pH7.4 PBS, 0.05% NaN ₃ , 40% Glycerol
Concentration:	lot specific
Purification:	Antigen affinity purification
Conjugation:	Unconjugated
Storage:	Store at -20°C as received.
Stability:	Stable for 12 months from date of receipt.
Predicted Protein Size:	69 kDa
Gene Name:	dopamine beta-hydroxylase
Database Link:	NP_000778 Entrez Gene 13166 Mouse Entrez Gene 1621 Human P09172
Background:	The protein encoded by this gene is an oxidoreductase belonging to the copper type II, ascorbate-dependent monooxygenase family. It is present in the synaptic vesicles of postganglionic sympathetic neurons and converts dopamine to norepinephrine. It exists in both soluble and membrane-bound forms, depending on the absence or presence, respectively, of a signal peptide.



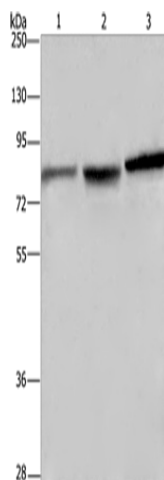
[View online »](#)

Synonyms: DBM

Protein Families: Druggable Genome, Secreted Protein, Transmembrane

Protein Pathways: Metabolic pathways, Tyrosine metabolism

Product images:



Gel: 8%SDS-PAGE

Lysate: 40 μ g

Lane 1-3: Mouse brain tissue

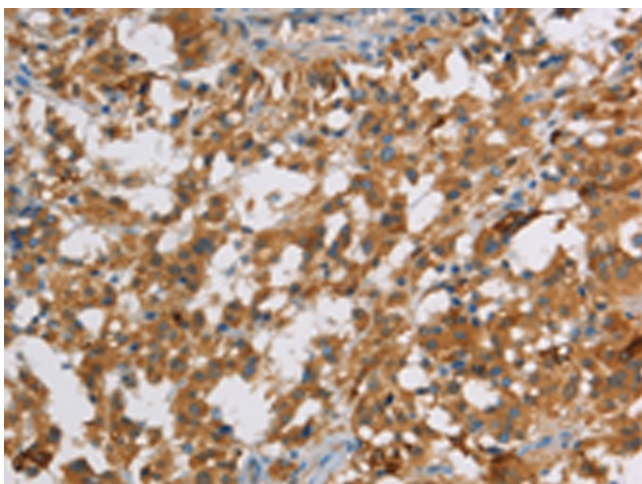
A172 cells

HeLa cells

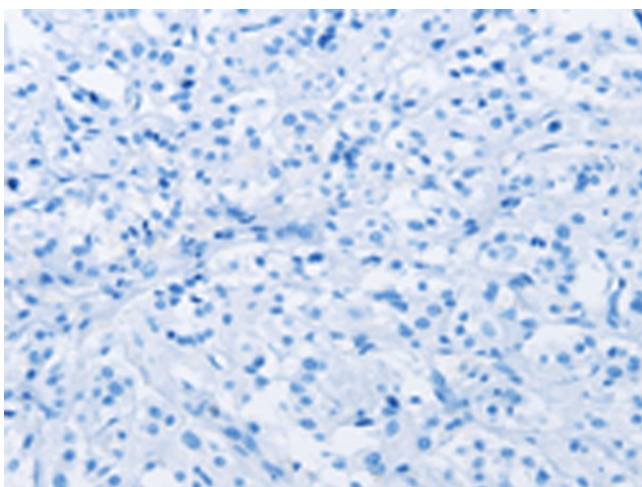
Primary antibody: TA349869 (DBH Antibody) at dilution 1/200

Secondary antibody: Goat anti rabbit IgG at 1/8000 dilution

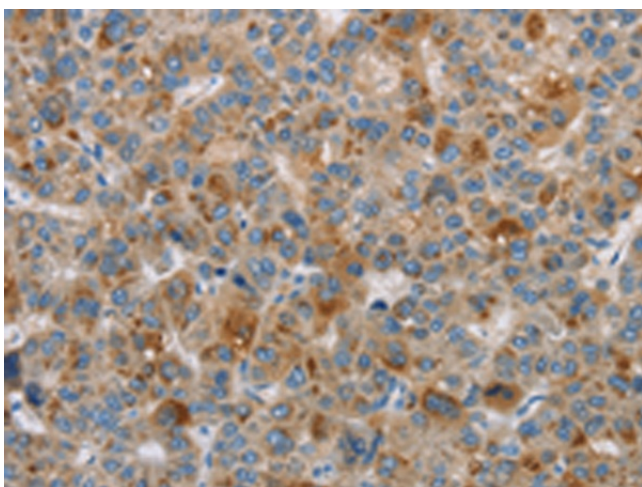
Exposure time: 10 seconds



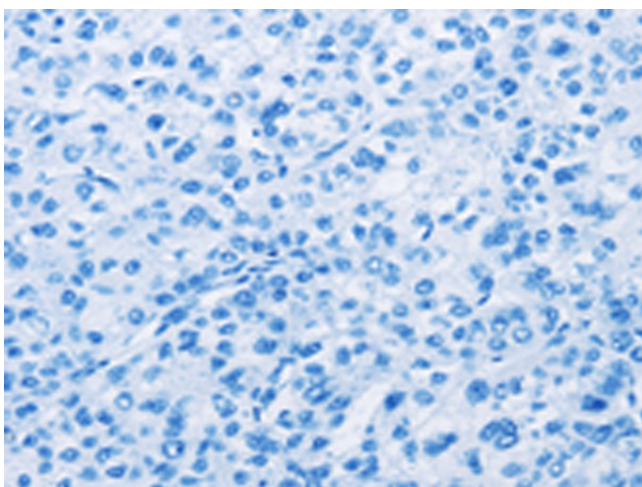
Immunohistochemistry of paraffin-embedded Human thyroid cancer tissue using TA349869 (DBH Antibody) at dilution 1/70 (Original magnification: \times 200)



Immunohistochemistry of paraffin-embedded Human thyroid cancer tissue using TA349869 (DBH Antibody) at dilution 1/70, treated with fusion protein. (Original magnification: $\times 200$)



Immunohistochemistry of paraffin-embedded Human liver cancer tissue using TA349869 (DBH Antibody) at dilution 1/70 (Original magnification: $\times 200$)



Immunohistochemistry of paraffin-embedded Human liver cancer tissue using TA349869 (DBH Antibody) at dilution 1/70, treated with fusion protein. (Original magnification: $\times 200$)