

Product datasheet for **TA349866**

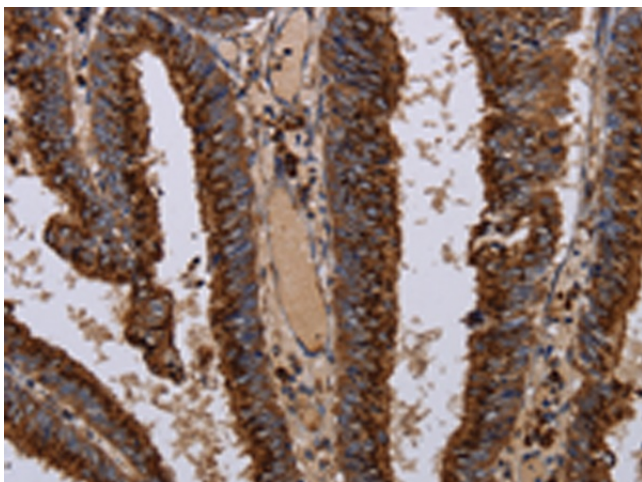
DARPP32 (PPP1R1B) Rabbit Polyclonal Antibody

Product data:

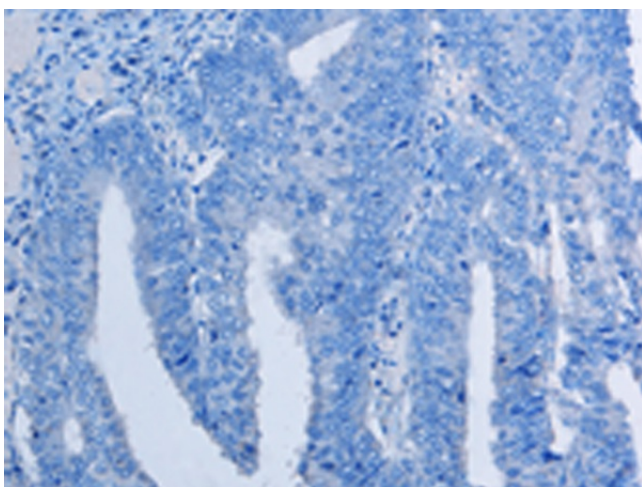
Product Type:	Primary Antibodies
Applications:	IHC
Recommended Dilution:	IHC: 50-200 Positive control: Human colon cancer Predicted cell location: Cytoplasm
Reactivity:	Human, Rat
Host:	Rabbit
Isotype:	IgG
Clonality:	Polyclonal
Immunogen:	Fusion protein of human PPP1R1B
Formulation:	pH7.4 PBS, 0.05% NaN ₃ , 40% Glycerol
Concentration:	lot specific
Purification:	Antigen affinity purification
Conjugation:	Unconjugated
Storage:	Store at -20°C as received.
Stability:	Stable for 12 months from date of receipt.
Gene Name:	protein phosphatase 1 regulatory inhibitor subunit 1B
Database Link:	NP_115568 Entrez Gene 360616 Rat Entrez Gene 84152 Human Q9UD71
Background:	This gene encodes a bifunctional signal transduction molecule. Dopaminergic and glutamatergic receptor stimulation regulates its phosphorylation and function as a kinase or phosphatase inhibitor. As a target for dopamine, this gene may serve as a therapeutic target for neurologic and psychiatric disorders. Multiple transcript variants encoding different isoforms have been found for this gene
Synonyms:	DARPP-32; DARPP32
Protein Families:	Druggable Genome



[View online »](#)

Product images:

Immunohistochemistry of paraffin-embedded Human colon cancer tissue using TA349866 (PPP1R1B Antibody) at dilution 1/50 (Original magnification: $\times 200$)



Immunohistochemistry of paraffin-embedded Human colon cancer tissue using TA349866 (PPP1R1B Antibody) at dilution 1/50, treated with fusion protein. (Original magnification: $\times 200$)